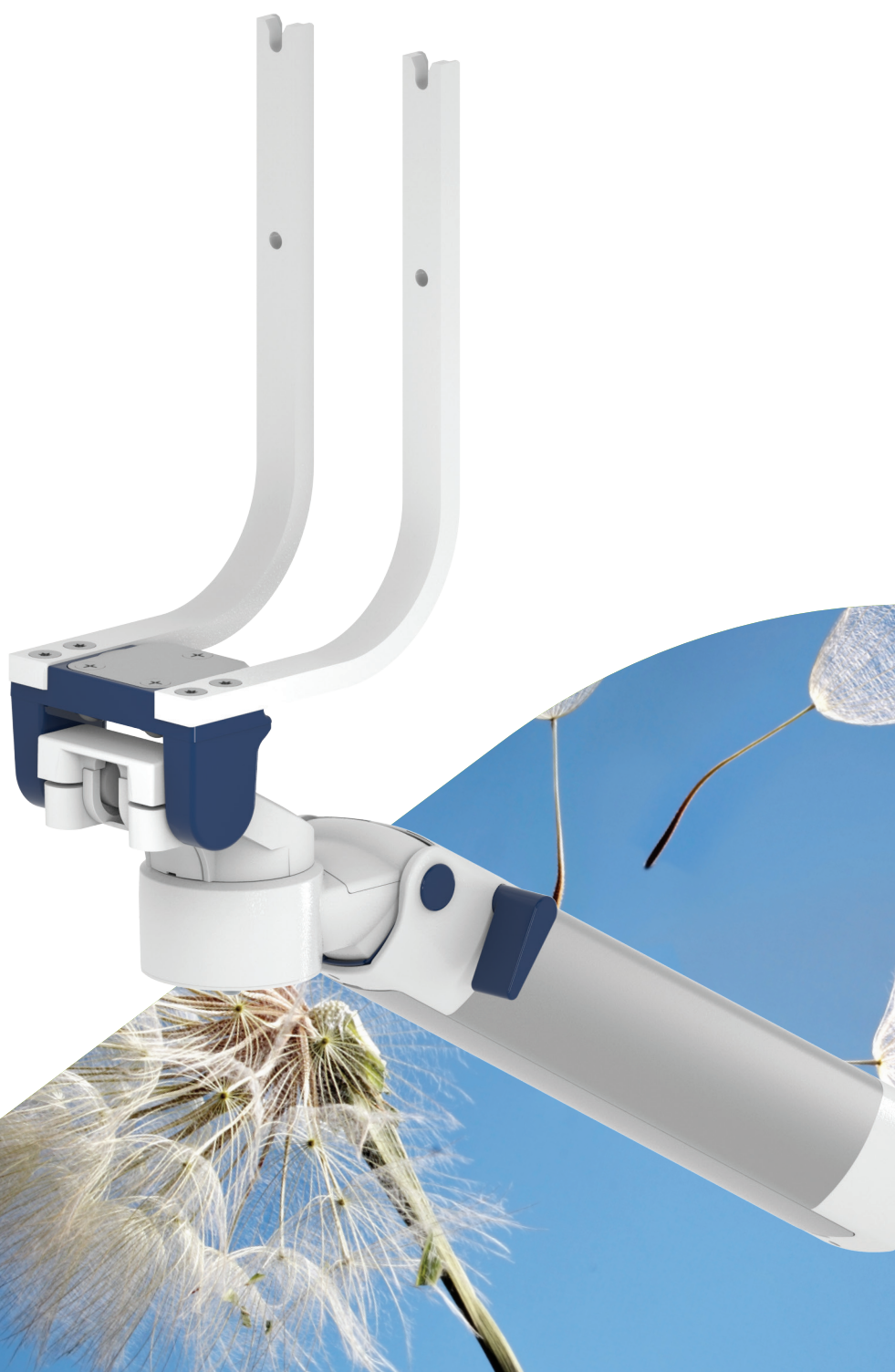




MOUNTING REFERENCE GUIDE

Spacelabs Monitoring Xprezzon

CIM Cable Integrated Mounting System



Notes

General notes	3
How to create part numbers	4
Product highlights	6
Flush mount Xprezzon Display	7
Support arm pivot Xprezzon Display	9
Support arm pivot Xprezzon Backpack	11
Height adjustable arm Xprezzon Display	13
Height adjustable arm Xprezzon Backpack	15
Extended height adjustable arm Xprezzon Display	17
Extended height adjustable arm Xprezzon Backpack	19
High position height adjustable arm Xprezzon Display	21
High position height adjustable arm Xprezzon Backpack	23
Extended high position height adjustable arm Xprezzon Display	25
Extended high position height adjustable arm Xprezzon Backpack	27
Cart light duty Xprezzon Display	29
Cart light duty Xprezzon Backpack	31
Xprezzon monitor support	33
Fixings	34
Befestigungsmöglichkeiten für Anästhesiegeräte	35

General notes

Backpack solution for Xprezzon

All mounting solutions for the backpack solution are provided with centered VESA monitor adaptation in order to guarantee smooth and safe tilt operation.

Please order the “O” bracket separately with Spacelabs (Spacelabs part no. 016-0899-00).

Components' grounding

All arms with integrated cable management are equipped with **component grounding**. No grounding is required for arms with external or semi-integrated cable management with cables not being led through joints.

Load capacity

All **height adjustable arms** have a load capacity of 22 kg / 48.5 lbs. Rear mounted monitor adaptations and horizontally

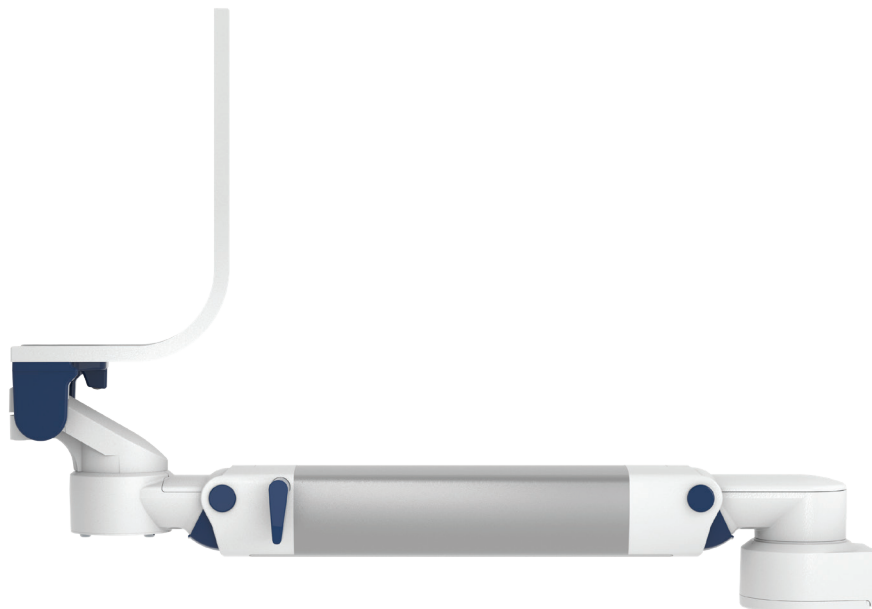
mounted 5“ plunge plates accept a maximum monitor weight of 18 kg / 39.7 lbs. An additional 4 kg / 8.8 lbs may be mounted on a down post underneath the front swivel part. Depending on material and tensile factor all weight indications have a 4-fold and / or 6-fold safety factor according to EN 60601-1, 3rd Edition regulations.

Custom-designed solutions and MRI applications

Please contact us for **custom-designed** solutions.

Product marking

All CIM products are CE marked. As **medical product risk class 1** and they conform with the regulations MDD 93/42 ECC and EN 60601-1, 3rd Edition. TUEV reports for numerous products especially for anaesthesia applications guarantee electrical and mechanical safety of our products and are available upon request.



How to create part numbers

Part numbers can be easily created by following the steps below:

Please replace the letters in **green** with the part no. code as per your requirements.

1. Components' grounding:

S	=	not grounded
A	=	grounded

2. Choose the arm version required:

910G	=	flush mount Xpresson Display
224G / 230G	=	pivot arm Xpresson Display
224SLX / 230SLX	=	pivot arm Xpresson Backpack
431G	=	height adjustable arm Xpresson Display
431SLX	=	height adjustable arm Xpresson Backpack
73130G	=	extended height adjustable arm Xpresson Display
73130SLX	=	extended height adjustable arm Xpresson Backpack
531G	=	high position height adjustable arm Xpresson Display
531SLX	=	high position height adjustable arm Xpresson Backpack
83130G	=	extended high position height adjustable arm Xpresson Display
83130SLX	=	extended high position height adjustable arm Xpresson Backpack

3. Specify where you want to mount the arm and select the fixing (Y):

1V	=	pole ø 23 - 40 mm / 0.9 - 1.6"
1	=	pole ø 25 mm / 1.0"
1F	=	pole ø 35 mm / 1.4"
1C	=	pole ø 38 mm / 1.5"
2F	=	horizontal rails 10 x 25, 8 x 35, 10 x 30, 10 x 50 mm
3	=	vertical rail 10 x 25 mm
3DR	=	dual vertical rails, distance 150 mm/ 5.9"
3TX	=	dual vertical rails, distance 225 mm/ 8.9"
4V	=	vertical wall channel
4U	=	vertical wall channel for arms with high mounting position
13	=	Mindray medical supply units
17	=	Amico pendants & headwalls
9	=	Löwenstein Medical anaesthesia machine
4K	=	anaesthesia machine with existing channel

How to create part numbers

4. Choose the colour requested for decorative parts (C):

gr = RAL 7024 (graphite grey)
bl = RAL 5013 (cobalt blue)

5. Choose the colour requested for the aluminium die-cast parts (D):

1 = RAL 9016 (traffic white)
2 = RAL 9002 (grey white)

6. Specify the spring depending on the weight of your monitor/ device - only with height adjustable arms (X):

95 = 4 - 9 kg / 8.8 - 19.8 lbs (Xprezzon Display)
175 = 13 - 16 kg / 28.7 - 35.3 lbs (Xprezzon Backpack)

Example

01 Grounding		02 Arm version		03 Fixing		04 & 05 Colour		06 Spring tension
A	-	431SLX	-	Y	.	CD	—	X
A	-	431SLX	-	4V	.	gr1	—	95

Product highlights

Non-height adjustable arm

Pivot and extended pivot arms offer **full cable integration** and easy cleaning for **infection control** in all critical care areas in the clinical environment. Our **5-years warranty** guarantees reliable, trouble-free and maintenance-free operation. The swivel function at the fixing point as well as the **tilt/ swivel function** of the monitor adaptation offers optimum positioning of your device. The extended pivot arm is a two-part arm with central pivot point between the two arm sections. All bottom-mounted monitors have the safety feature of a **20° tilt stop**.

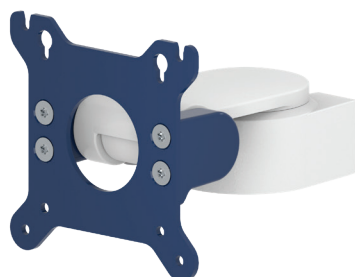
Height adjustable arm

The height adjustable arm offers **full cable integration**, one-wipe clean surfaces and our **5-year warranty** on the entirety of the product. Vertically and horizontally adjustable, the arm offers optimal positioning of your device. A constant viewing angle when vertically adjusted is guaranteed by a parallel linkage. **Weight-optimized springs counter-balance** the monitor without making any adjustments. All bottom-mounted monitors have the safety feature of a **20° tilt stop**. Individual rotational stops may be integrated in any joint.

To provide the perfect combination of arm and monitor, the CIM articulated height adjustable arm has a simple quarter-turn lock to hold the arm safely in position when removing the monitor. Furthermore the arm is equipped with the unique safety feature of a slow-release gas spring. Should anybody try to remove the monitor before locking the arm in position, the arm will only rise at a slow and even tempo.

SAFETY

Flush mount Xprezzon Display



Monitor adaption

VESA 75/100

Colours to choose

decorative parts RAL 5013 cobalt blue / RAL 7024 graphite grey
aluminum parts RAL 9016 traffic white / RAL 9002 grey white

Max. load capacity support arm

18 kg / 39.7 lbs

Max. load monitor adaptation

18 kg / 39.7 lbs

Product weight

1 kg / 2.2 lbs

Part number

S-910G-Y.CD

Fixings

Y | details page 34



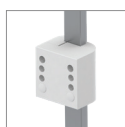
4V

Adapter for
vertical wall channel



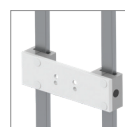
2F

Fixed rail clamp



3

Vertical rail clamp



3DR
3TX

Dual vertical rail clamp



1
1F
1C
1V

Fixed / universal
pole clamp



13

Adapter for Mindray
medical supply units



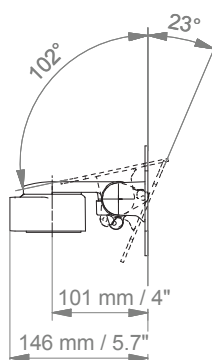
17

Adapter for Amico
pendants & headwalls

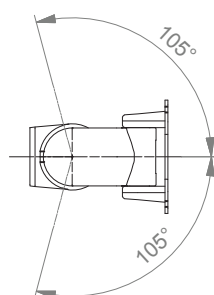
Flush mount Xprezzon Display

Technical data

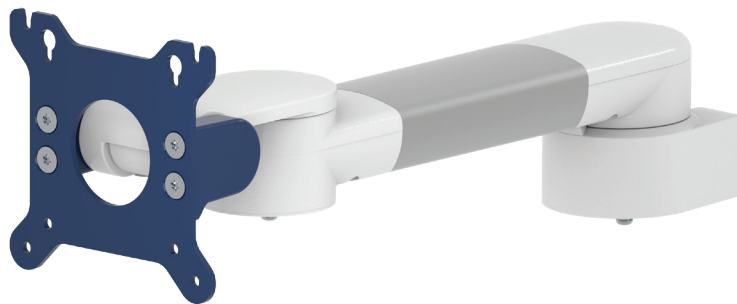
SIDE VIEW



TOP VIEW



Support arm pivot Xprezzon Display



Monitor adaption

VESA 75/100

Colours to choose

decorative parts RAL 5013 cobalt blue / RAL 7024 graphite grey
aluminum parts RAL 9016 traffic white / RAL 9002 grey white

Max. load capacity support arm

18 kg / 39.7 lbs

Max. load monitor adaptation

18 kg / 39.7 lbs

Product weight

240 mm / 9.5": 1.8 kg / 4.0 lbs 300 mm / 11.8": 1.9 kg / 4.2 lbs

Part number

arm length 240 mm / 9.5"
A-224G-Y.CD

arm length 300 mm / 11.8"
A-230G-Y.CD

Fixings

Y | details page 34 and 35



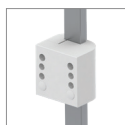
4V

Adapter for
vertical wall channel



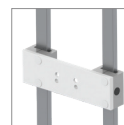
2F

Fixed rail clamp



3

Vertical rail clamp



3DR
3TX

Dual vertical rail clamp



1
1F
1C
1V

Fixed / universal
pole clamp



13

Adapter for Mindray
medical supply units



17

Adapter for Amico
pendants & headwalls



9

Adapter for Löwenstein Medical
anaesthesia machines



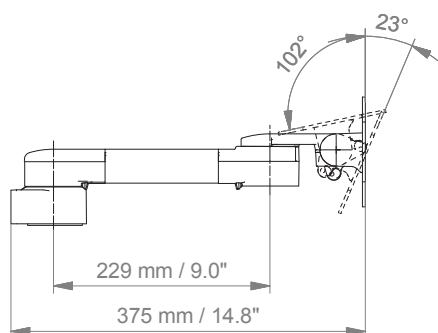
4K

Adapter for anaesthesia machines
with existing side channel

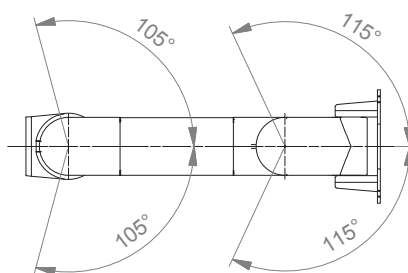
Support arm pivot Xprezzon Display

Technical data - arm length 300 mm / 11.8"

SIDE VIEW



TOP VIEW



Support arm pivot Xprezzon Backpack



Monitor adaption

Spacelabs VESA 75 Backpack (monitor & display)

Colours to choose

decorative parts RAL 5013 cobalt blue / RAL 7024 graphite grey
aluminum parts RAL 9016 traffic white / RAL 9002 grey white

Max. load capacity support arm

17 kg / 37.5 lbs

Max. load monitor adaptation

17 kg / 37.5 lbs

Product weight

240 mm / 9.5": 2.6 kg / 5.7 lbs 300 mm / 11.8": 2.8 kg / 6.2 lbs

Part number

arm length 240 mm / 9.5"
A-224SLX-**Y.CD**

arm length 300 mm / 11.8"
A-230SLX-**Y.CD**

Fixings

Y | details page 34 and 35



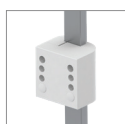
4V

Adapter for vertical wall channel



2F

Fixed rail clamp



3

Vertical rail clamp



**3DR
3TX**

Dual vertical rail clamp



**1
1F
1C
1V**

Fixed / universal pole clamp



13

Adapter for Mindray medical supply units



17

Adapter for Amico pendants & headwalls



9

Adapter for Löwenstein Medical anaesthesia machines



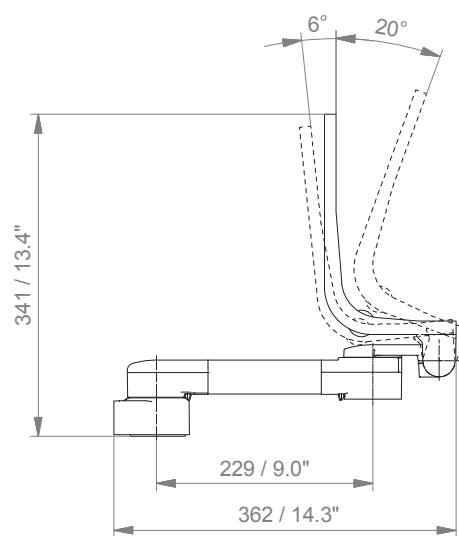
4K

Adapter for anaesthesia machines with existing side channel

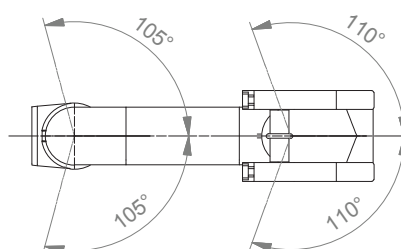
Support arm pivot Xprezzon Backpack

Technical data - arm length 300 mm / 11.8"

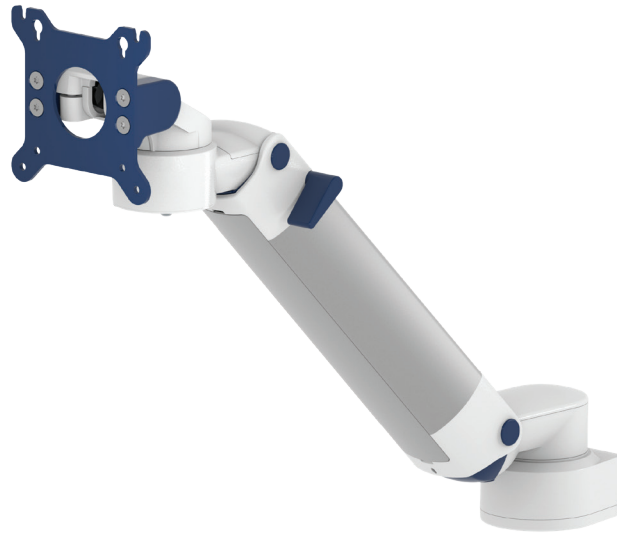
SIDE VIEW



TOP VIEW



Height adjustable arm Xprezzon Display



Monitor adaption	VESA 75/100
Height adjustment	slow-flowing spring, parallel linkage for a constant viewing angle
Colours to choose	decorative parts RAL 5013 cobalt blue / RAL 7024 graphite grey aluminum parts RAL 9016 traffic white / RAL 9002 grey white
Max. load capacity support arm	22 kg / 48.5 lbs
Max. load monitor adaptation	18 kg / 39.7 lbs
Product weight	3.3 kg / 7.3 lbs
Balancing range	950 N (4-9 kg / 8.8-19.8 lbs)
Part number	A-431G-Y.CD_95

Fixings

Y | details page 34 and 35



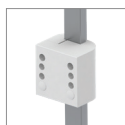
4V

Adapter for vertical wall channel



2F

Fixed rail clamp



3

Vertical rail clamp



3DR
3TX

Dual vertical rail clamp



1
1F
1C
1V

Fixed / universal pole clamp



13

Adapter for Mindray medical supply units



17

Adapter for Amico pendants & headwalls



9

Adapter for Löwenstein Medical anaesthesia machines



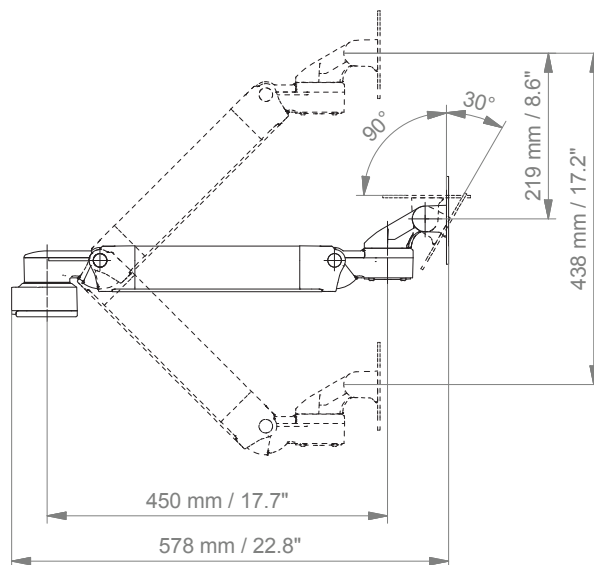
4K

Adapter for anaesthesia machines with existing side channel

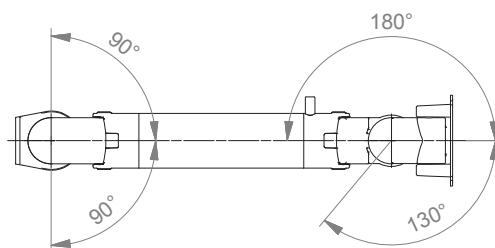
Height adjustable arm Xprezzon Display

Technical data

SIDE VIEW



TOP VIEW



Height adjustable arm Xprezzon Backpack



Monitor adaption	Spacelabs VESA 75 Backpack (monitor & display)
Height adjustment	slow-flowing spring, parallel linkage for a constant viewing angle
Colours to choose	decorative parts RAL 5013 cobalt blue / RAL 7024 graphite grey aluminum parts RAL 9016 traffic white / RAL 9002 grey white
Max. load capacity support arm	21 kg / 46.3 lbs
Max. load monitor adaptation	18 kg / 39.7 lbs
Product weight	4.6 kg / 10.1 lbs
Balancing range	1750 N (13-16 kg / 28.7-35.3 lbs)
Part number	A-431SLX-Y.CD_175

Fixings

Y | details page 34 and 35



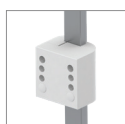
4V

Adapter for vertical wall channel



2F

Fixed rail clamp



3

Vertical rail clamp



3DR
3TX

Dual vertical rail clamp



1
1F
1C
1V

Fixed / universal pole clamp



13

Adapter for Mindray medical supply units



17

Adapter for Amico pendants & headwalls



9

Adapter for Löwenstein Medical anaesthesia machines



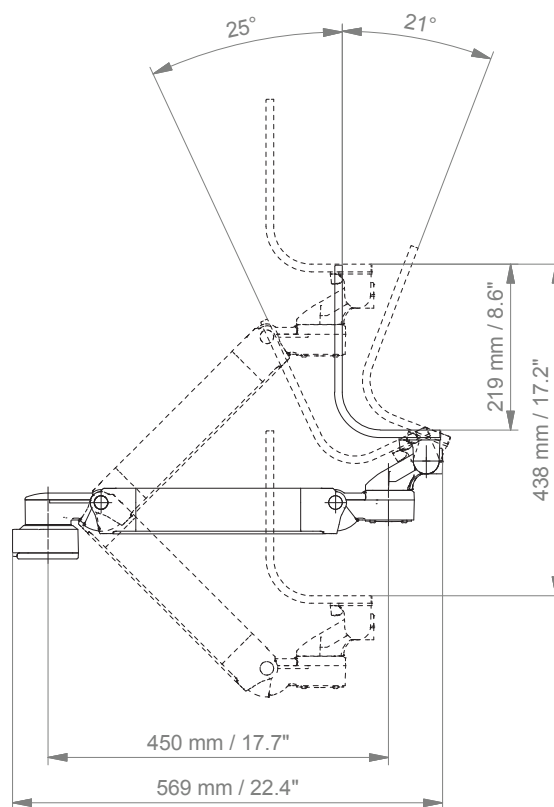
4K

Adapter for anaesthesia machines with existing side channel

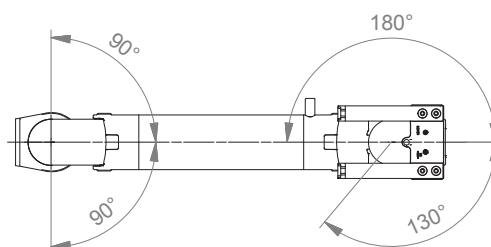
Height adjustable arm Xprezzon Backpack

Technical data

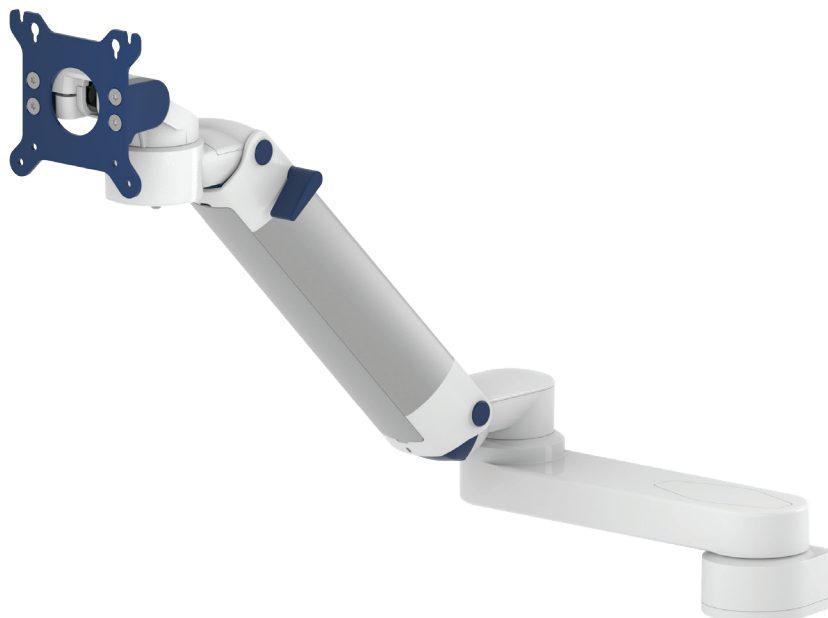
SIDE VIEW



TOP VIEW



Extended height adjustable arm Xprezzon Display



Monitor adaption	VESA 75/100
Height adjustment	slow-flowing spring, parallel linkage for a constant viewing angle
Colours to choose	decorative parts RAL 5013 cobalt blue / RAL 7024 graphite grey aluminum parts RAL 9016 traffic white / RAL 9002 grey white
Max. load capacity support arm	22 kg / 48.5 lbs
Max. load monitor adaptation	18 kg / 39.7 lbs
Product weight	4.8 kg / 10.6 lbs
Balancing range	950 N (4-9 kg / 8.8-19.8 lbs)
Part number	A-73130G-Y.CD_95

Fixings

Y | details page 34 and 35



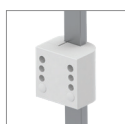
4V

Adapter for vertical wall channel



2F

Fixed rail clamp



3

Vertical rail clamp



3DR
3TX

Dual vertical rail clamp



1
1F
1C
1V

Fixed / universal pole clamp



13

Adapter for Mindray medical supply units



17

Adapter for Amico pendants & headwalls



9

Adapter for Löwenstein Medical anaesthesia machines



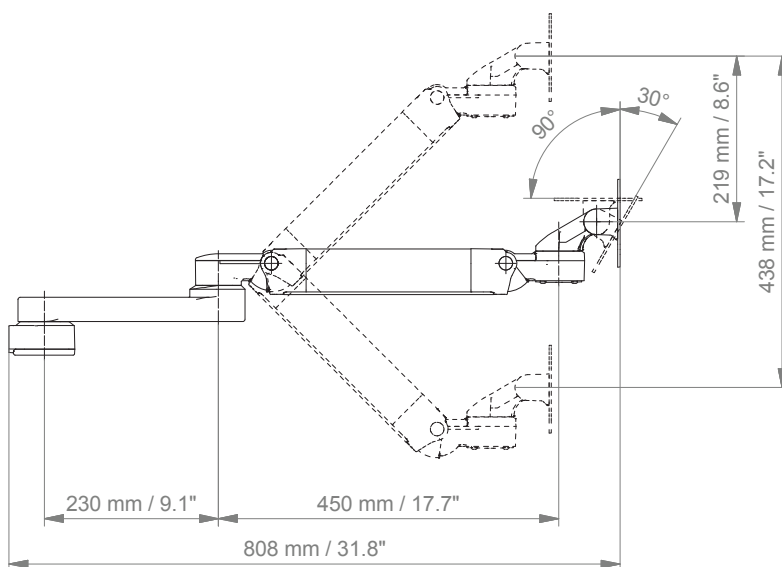
4K

Adapter for anaesthesia machines with existing side channel

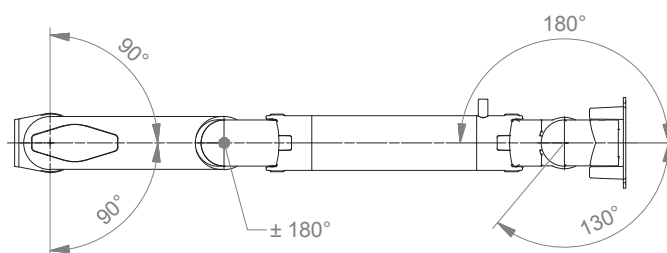
Extended height adjustable arm Xprezzon Display

Technical data

SIDE VIEW



TOP VIEW



Extended height adjustable arm Xprezzon Backpack



Monitor adaption	Spacelabs VESA 75 Backpack (monitor & display)
Height adjustment	slow-flowing spring, parallel linkage for a constant viewing angle
Colours to choose	decorative parts RAL 5013 cobalt blue / RAL 7024 graphite grey aluminum parts RAL 9016 traffic white / RAL 9002 grey white
Max. load capacity support arm	21 kg / 46.3 lbs
Max. load monitor adaptation	18 kg / 39.7 lbs
Product weight	5.6 kg / 12.4 lbs
Balancing range	1750 N (13-16 kg / 28.7-35.3 lbs)
Part number	A-73130SLX-Y.CD_175

Fixings

Y | details page 34 and 35



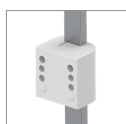
4V

Adapter for vertical wall channel



2F

Fixed rail clamp



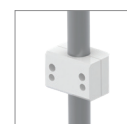
3

Vertical rail clamp



3DR
3TX

Dual vertical rail clamp



1
1F
1C
1V

Fixed / universal pole clamp



13

Adapter for Mindray medical supply units



17

Adapter for Amico pendants & headwalls



9

Adapter for Löwenstein Medical anaesthesia machines



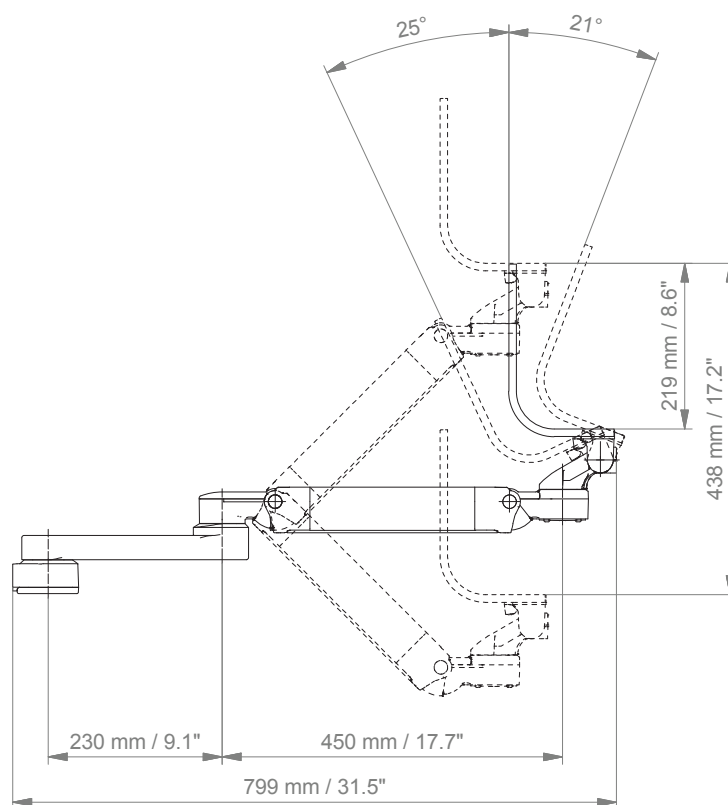
4K

Adapter for anaesthesia machines with existing side channel

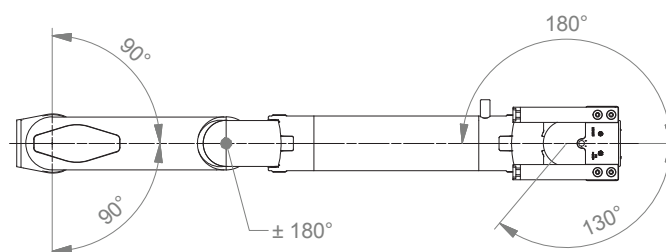
Extended height adjustable arm Xprezzon Backpack

Technical data

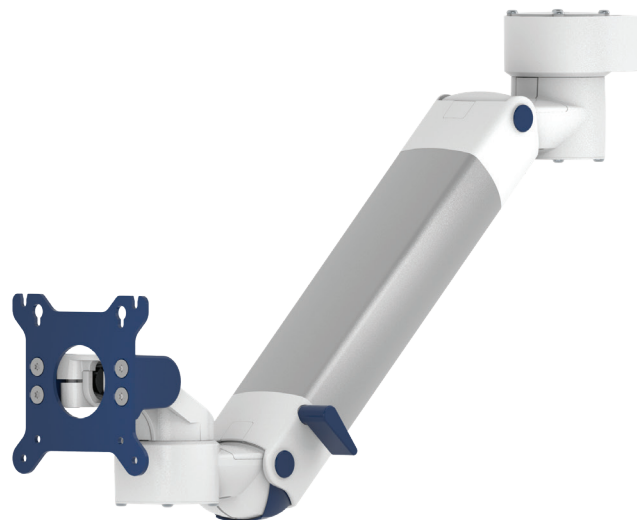
SIDE VIEW



TOP VIEW



High position height adjustable arm Xprezzon Display



Monitor adaption	VESA 75/100
Height adjustment	slow-flowing spring, parallel linkage for a constant viewing angle
Colours to choose	decorative parts RAL 5013 cobalt blue / RAL 7024 graphite grey aluminum parts RAL 9016 traffic white / RAL 9002 grey white
Max. load capacity support arm	22 kg / 48.5 lbs
Max. load monitor adaptation	18 kg / 39.7 lbs
Product weight	3.8 kg / 8.4 lbs
Balancing range	950 N (4-9 kg / 8.8-19.8 lbs)
Part number	A-531G-Y.CD_95

Fixings

Y | details page 34



4U

Adapter for vertical wall channel



3

Vertical rail clamp



3DR
3TX

Dual vertical rail clamp



1
1F
1C
1V

Fixed / universal pole clamp



13

Adapter for Mindray medical supply units



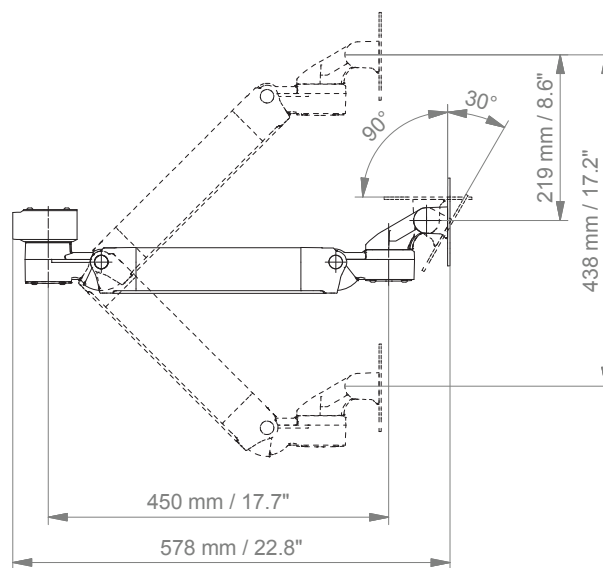
17

Adapter for Amico pendants & headwalls

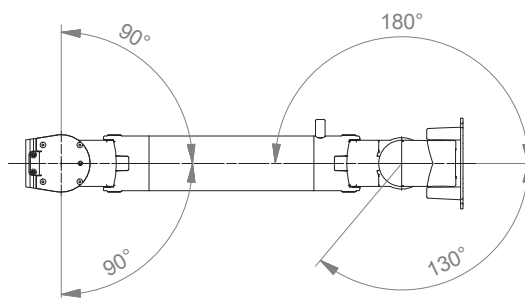
High position height adjustable arm Xprezzon Display

Technical data

SIDE VIEW



TOP VIEW



High position height adjustable arm Xprezzon Backpack



Monitor adaption

Spacelabs VESA 75 Backpack (monitor & display)

Height adjustment

slow-flowing spring, parallel linkage for a constant viewing angle

Colours to choose

decorative parts RAL 5013 cobalt blue / RAL 7024 graphite grey
aluminum parts RAL 9016 traffic white / RAL 9002 grey white

Max. load capacity support arm

21 kg / 46.3 lbs

Max. load monitor adaptation

18 kg / 39.7 lbs

Product weight

5.0 kg / 11.0 lbs

Balancing range

1750 N (13-16 kg / 28.7-35.3 lbs)

Part number

A-531SLX-**Y**.CD_175

Fixings

Y | details page 34



4U

Adapter for
vertical wall channel



3

Vertical rail clamp



3DR
3TX

Dual vertical rail clamp



1
1F
1C
1V

Fixed / universal
pole clamp



13

Adapter for Mindray
medical supply units



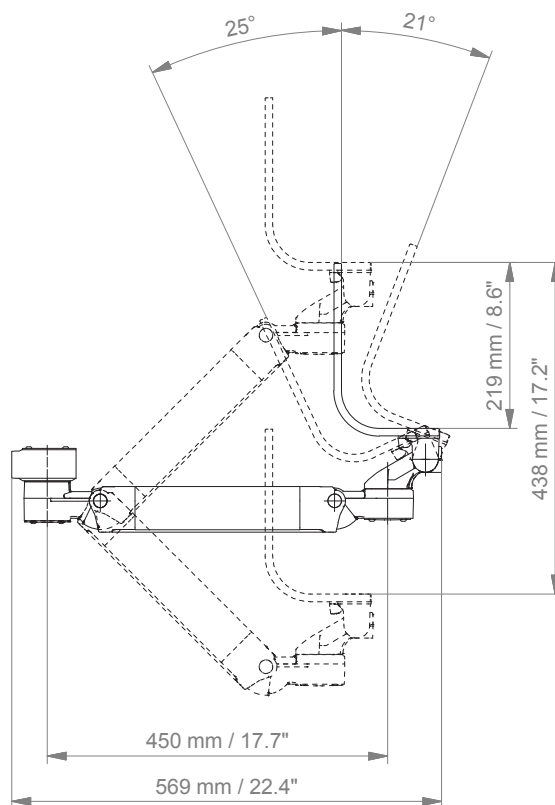
17

Adapter for Amico
pendants & headwalls

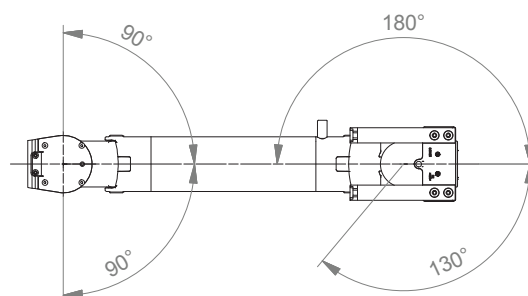
High position height adjustable arm Xprezzon Backpack

Technical data

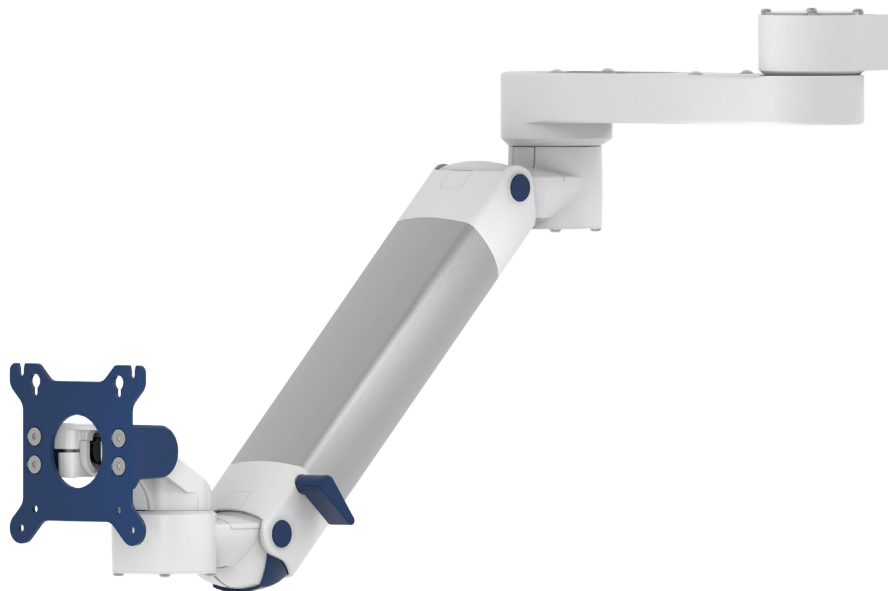
SIDE VIEW



TOP VIEW



Extended high position height adjustable arm Xprezzon Display



Monitor adaption	VESA 75/100	
Height adjustment	slow-flowing spring, parallel linkage for a constant viewing angle	
Colours to choose	decorative parts	RAL 5013 cobalt blue / RAL 7024 graphite grey
	aluminum parts	RAL 9016 traffic white / RAL 9002 grey white
Max. load capacity support arm	22 kg / 48.5 lbs	
Max. load monitor adaptation	18 kg / 39.7 lbs	
Product weight	5.2 kg / 11.5 lbs	
Balancing range	950 N (4-9 kg / 8.8-19.8 lbs)	
Part number	A-83130G-Y.CD_X	

Fixings

Y | details page 34



4U

Adapter for vertical wall channel



3

Vertical rail clamp



3DR
3TX

Dual vertical rail clamp



1
1F
1C
1V

Fixed / universal pole clamp



13

Adapter for Mindray medical supply units



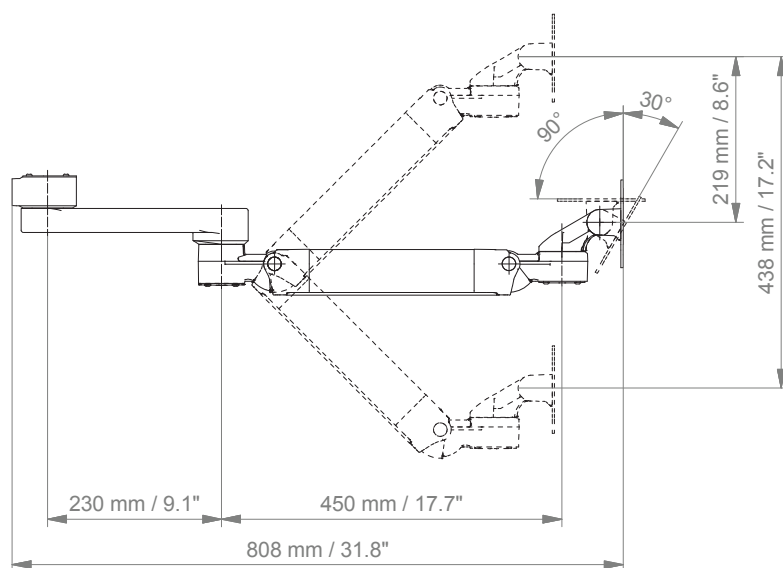
17

Adapter for Amico pendants & headwalls

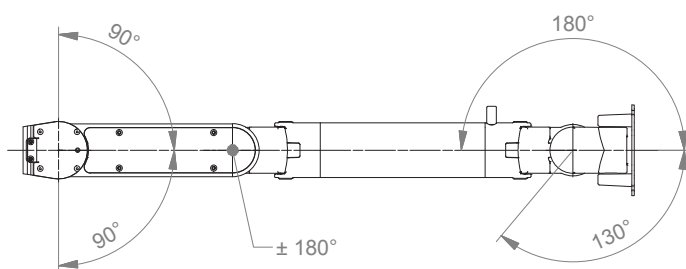
Extended high position height adjustable arm Xprezzon Display

Technical data

SIDE VIEW



TOP VIEW



Extended high position height adjustable arm Xprezzon Backpack



Monitor adaption

Spacelabs VESA 75 Backpack (monitor & display)

Height adjustment

slow-flowing spring, parallel linkage for a constant viewing angle

Colours to choose

decorative parts	RAL 5013 cobalt blue / RAL 7024 graphite grey
aluminum parts	RAL 9016 traffic white / RAL 9002 grey white

Max. load capacity support arm

21 kg / 46.3 lbs

Max. load monitor adaptation

18 kg / 39.7 lbs

Product weight

6.1 kg / 13.5 lbs

Balancing range

1750 N (13-16 kg / 28.7-35.3 lbs)

Part number

A-83130SLX-Y.CD_175

Fixings

Y | details page 34



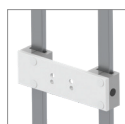
4U

Adapter for
vertical wall channel



3

Vertical rail clamp



3DR
3TX

Dual vertical rail clamp



1
1F
1C
1V

Fixed / universal
pole clamp



13

Adapter for Mindray
medical supply units



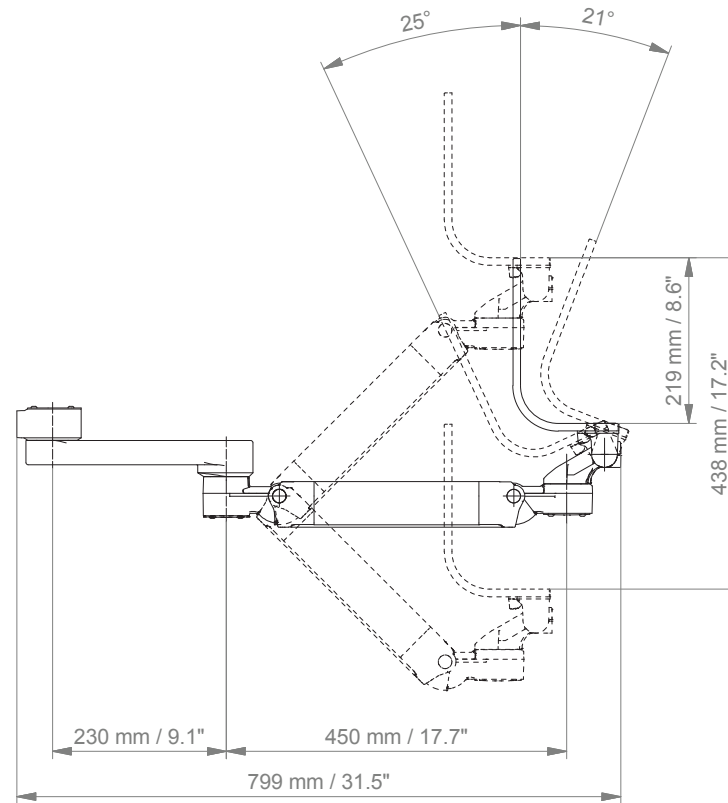
17

Adapter for Amico
pendants & headwalls

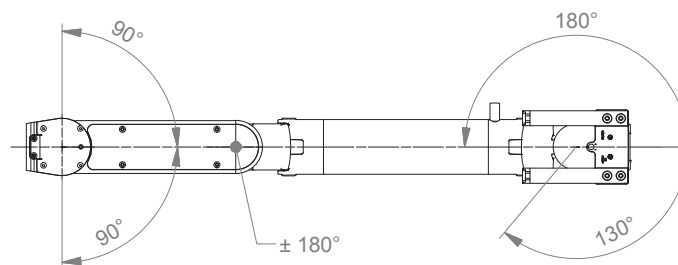
Extended high position height adjustable arm Xprezzon Backpack

Technical data

SIDE VIEW



TOP VIEW



Cart light duty Xprezzon Display

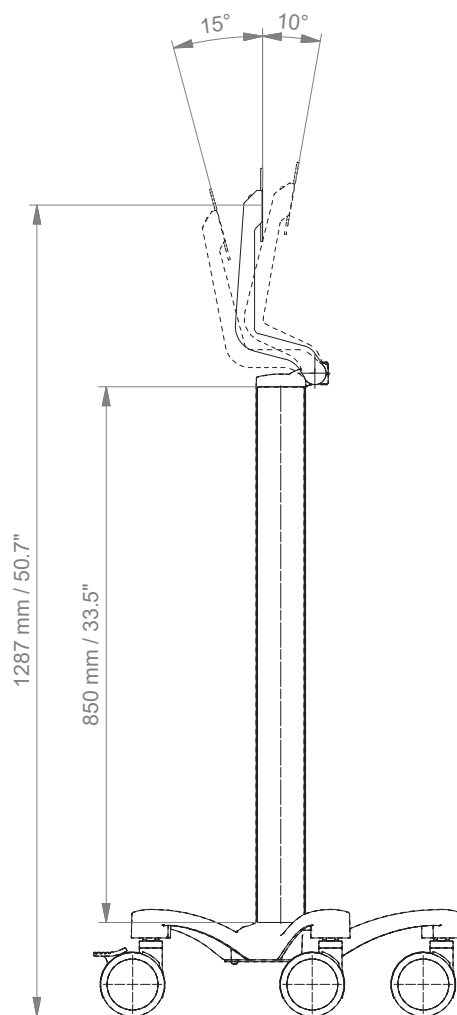


Monitor adaption	CL-bracket, VESA 75/100	
Accessories	5-star base aluminum base with counter weight double wheel castors, ø 100 mm / 3.9", 2 lockable column to accept components and accessories on opposite sides	
Colours to choose	decorative parts RAL 5013 blue / RAL 7024 graphite grey base RAL 9016 pure white / RAL 5013 blue handle RAL 9016 pure white / RAL 5013 blue / RAL 7024 graphite grey	
Max. load capacity	10 kg / 22 lbs	
Optional accessories	basket big 300 x 200 x 180 mm / 11.8 x 7.9 x 7.1" basket small 200 x 150 x 100 mm / 7.9 x 5.9 x 3.9" handle	
Part number	cart	R-002K. CD
	basket big	Z-51-4Z
	basket small	Z-52-4Z
	handle	Z-HD-4. C1

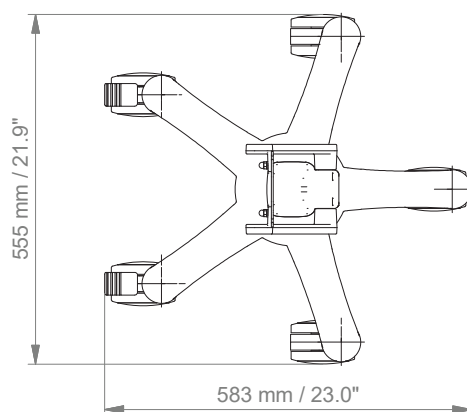
Cart light duty Xprezzon Display

Technical data

SIDE VIEW



TOP VIEW



Cart light duty Xprezzon Backpack



Monitor adaption

Spacelabs VESA 75 Backpack (monitor & display)

Accessories

5-star base aluminum base with counter weight
double wheel castors, \varnothing 100 mm / 3.9", 2 lockable
column to accept components and accessories on opposite sides

Colours to choose

decorative parts RAL 5013 blue / RAL 7024 graphite grey

base RAL 9016 pure white / RAL 5013 blue

handle RAL 9016 pure white / RAL 5013 blue / RAL 7024 graphite grey

Max. load capacity

14 kg / 30.9 lbs

Optional accessories

basket big 300 x 200 x 180 mm / 11.8 x 7.9 x 7.1"

basket small 200 x 150 x 100 mm / 7.9 x 5.9 x 3.9"

handle

Part number

cart R-002SLX.**CD**

basket big Z-51-4Z

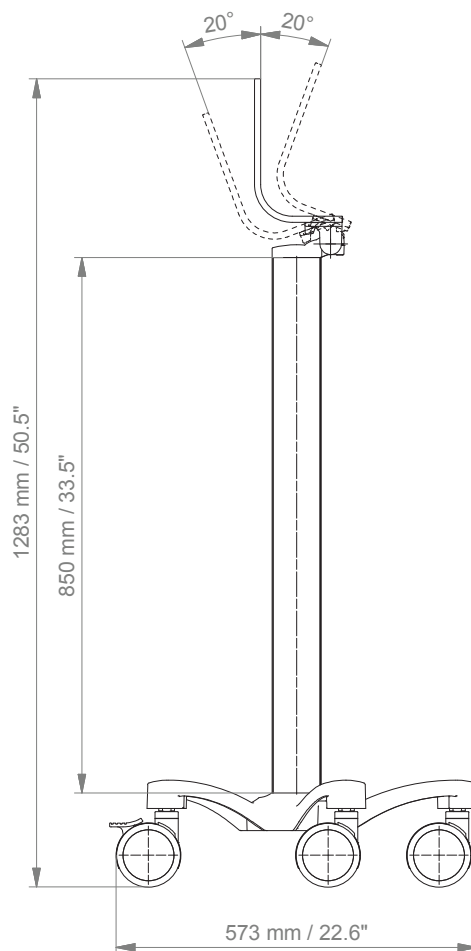
basket small Z-52-4Z

handle Z-HD-4.**C1**

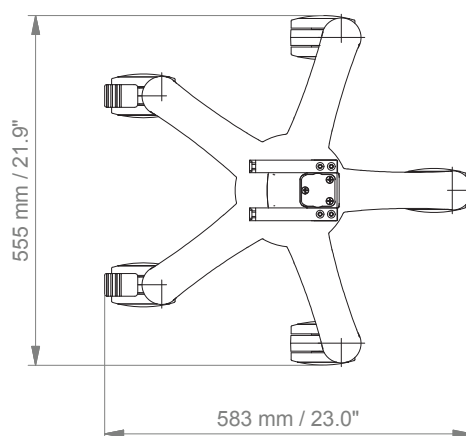
Cart light duty Xprezzon Backpack

Technical data

SIDE VIEW



TOP VIEW



Xprezzon monitor support

The Xprezzon monitor and display can be mounted separately. Please order the “0” bracket with Spacelabs.



Part no. SL-XP-4Z
Vertical wall channel / cart column profile



Part no. SL-XP-6H
Horizontal European rail
10 x 25 mm, 8 x 35 mm, 10 x 30 mm, 10 x 50 mm



Part no. SL-XP-3
Vertical European rail 10 x 25 mm



Part no. SL-XP-1V
Pole \varnothing 23 - 40 mm / 0.9 - 1.6"

Fixings

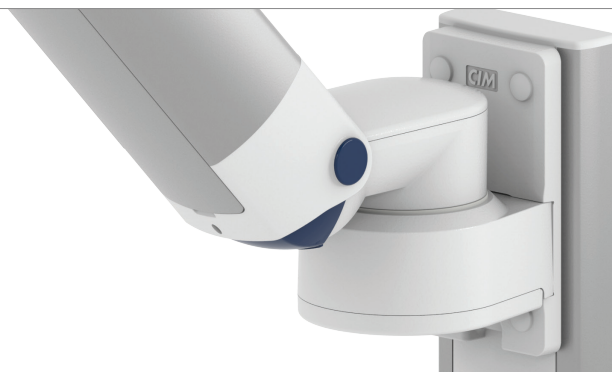










Illustration	Description	Notes	Part no.
	Adapter for vertical wall channel	To mount to CIM wall channel (compatible with GCX channel) For arms with high mounting positions Please order separately: CIM wall channel, see catalogue accessoires	4V 4U
	Fixed rail clamp	To mount to horizontal European rails 10 x 25, 8 x 35, 10 x 30, 10 x 50 mm	2F
	Vertical rail clamp	To mount to vertical European rail 10 x 25 mm	3
	Dual vertical rail clamp	To mount to two parallel vertical European rails 10 x 25 mm Distance between rails 150 mm / 5.9", e.g. Dräger pendant Distance between rails 225 mm / 8.9", e.g. Trilux pendant	3DR 3TX
	Fixed pole clamp	To mount to pole ø 25 mm / 1.0" To mount to pole ø 35 mm / 1.4" To mount to pole ø 38 mm / 1.5"	1 1F 1C
	Universal pole clamp	V-block to mount to pole ø 23 - 40 mm / 0.9 - 1.6"	1V
	Adapter medical supply units	For Mindray medical supply units	13
	Adapter pendants & headwalls	For Amico pendants & headwalls	17

Fixings for anaesthesia machines

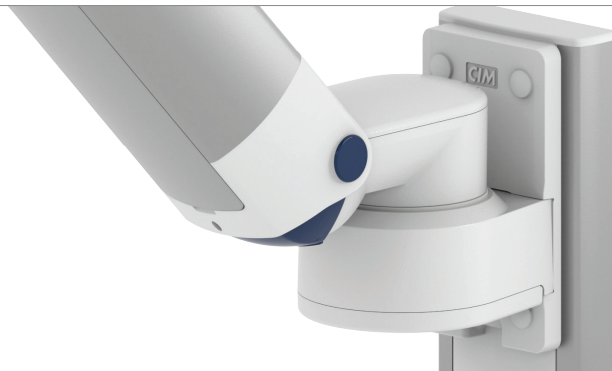


Illustration	Description	Notes	Part no.
	Adapter for Löwenstein Medical anaesthesia machines	Adapter for Leon / Leon plus	9
	Adapter for anaesthesia machines (all suppliers)	H 80 mm / 3.1" With existing side channel	4K
If your anaesthesia machine does not have a side channel already mounted to the machine, please order the following in addition to 4K:			
	Adapter for Dräger	Dräger Primus / Julian / Cato / Fabius GS / Zeus side channel adapter L 127 mm / 5" side channel adapter L 320 mm / 12.6"	DR-J01 DR-J02
			
	Adapter for GE	GE Avance / Aespire / Aestiva side channel adapter L 200 mm / 7.9"	DX-AES-01
			



CIM med GmbH

Euro-Industriepark
Margot-Kalinke-Str. 9
80939 Munich / Germany

T +49 89. 978 94 08-0

F +49 89. 978 94 08-29

M info@cim-med.com

www.cim-med.com

