



MOUNTING REFERENCE GUIDE

# Spacelabs Monitoring Qube

CIM Cable Integrated Mounting System



# Content

General notes	3
How to create part numbers	4
Quick release adapter plate VESA	6
Product highlights	7
Flush mount qube	8
Support arm pivot qube	10
Support arm pivot qube with docking station	12
Extended pivot arm light duty qube	14
Extended pivot arm light duty qube with docking station	16
Height adjustable arm qube	18
Height adjustable arm qube with docking station	20
Extended height adjustable arm qube	22
Extended height adjustable arm qube with docking station	24
Cart light duty cube	26
Cart light duty cube with docking station	28
Fixings	30
Fixings for anaesthesia machines	31

## General notes

---

### Monitor Adaptations

The quick release monitor adaptation with adapter plate for VESA 75/75 (part no. Z-QR-C) allows a quick change of the monitor. Please note that the quick release adapter plate has to be ordered separately.

The 5" plunge plate is used for bottom-mounted monitors. A monitor-specific adapter plate (**AVS**), which is mounted underneath the monitor and slid into the 5" plunge plate, is included in each shipment.

### Components' grounding

All arms with integrated cable management are equipped with **component grounding**. No grounding is required for arms with external or semi-integrated cable management with cables not being led through joints.

### Load capacity

All **height adjustable arms** have a load capacity of 22 kg / 48.5 lbs. Rear mounted monitor adaptations and horizontally mounted 5" plunge plates accept a maximum monitor weight of 18 kg / 39.7 lbs. An additional 4 kg / 8.8 lbs may be mounted on a down post underneath the front swivel part. Depending on material and tensile factor all weight indications have a 4-fold and / or 6-fold safety factor according to EN 60601-1, 3rd Edition regulations.

### Custom-designed solutions and MRI applications

Please contact us for **custom-designed** solutions.

### Product marking

All CIM products are CE marked. As **medical product risk class 1** and they conform with the regulations MDD 93/42 ECC and EN 60601-1, 3rd Edition. TUEV reports for numerous products especially for anaesthesia applications guarantee electrical and mechanical safety of our products and are available upon request.



# How to create part numbers

Part numbers can be easily created by following the steps below:

Please replace the letters in **green** with the part no. code as per your requirements.

## 1. Components' grounding:

S	=	not grounded
A	=	grounded

## 2. Choose the arm version required:

910Q	=	flush mount qube
224Q / 230Q	=	support arm pivot qube
224AVS / 230AVS	=	support arm pivot qube with docking station
33030Q	=	extended pivot arm light duty qube
33030AVS	=	extended pivot arm light duty qube with docking station
431Q	=	height adjustable arm qube
431AVS	=	height adjustable arm qube with docking station
73130Q	=	extended height adjustable arm qube
73130AVS	=	extended height adjustable arm qube with docking station

## 3. Specify where you want to mount the arm and select the fixing (Y):

1V	=	pole ø 23 - 40 mm / 0.9 - 1.6"
1	=	pole ø 25 mm / 1.0"
1F	=	pole ø 35 mm / 1.4"
1C	=	pole ø 38 mm / 1.5"
2F	=	horizontal rails 10 x 25, 8 x 35, 10 x 30, 10 x 50 mm
3	=	vertical rail 10 x 25 mm
3DR	=	dual vertical rails, distance 150 mm/ 5.9"
3TX	=	dual vertical rails, distance 225 mm/ 8.9"
4V	=	vertical wall channel
13	=	Mindray medical supply units
17	=	Amico pendants & headwalls
9	=	Löwenstein Medical anaesthesia machine
4K	=	anaesthesia machine with existing channel

## How to create part numbers

### 4. Choose the colour requested for decorative parts (C):

gr = RAL 7024 (graphite grey)  
bl = RAL 5013 (cobalt blue)

### 5. Choose the colour requested for the aluminium die-cast parts (D):

1 = RAL 9016 (traffic white)  
2 = RAL 9002 (grey white)

### 6. Specify the spring depending on the weight of your monitor/ device - only with height adjustable arms (X):

95 = 4 - 9 kg / 8.8 - 19.8 lbs

## Example

01 Grounding		02 Arm version		03 Fixing		04 & 05 Colour		06 Spring tension
A	-	431Q	-	Y	.	CD	—	X
A	-	431Q	-	4V	.	gr1	—	95



## Quick release adapter plate VESA

---

### VESA 75 Quick release adapter plate (Z.QR-C.D)

The adapter plate shown is mounted to the rear side of the monitor's hole pattern 75 x 75 mm (2.9 x 2.9"). The quick release adapter plate has to be ordered separately.



## Product highlights

---

### Non-height adjustable arm

Pivot and extended pivot arms offer **full cable integration** and easy cleaning for **infection control** in all critical care areas in the clinical environment. Our **5-years warranty** guarantees reliable, trouble-free and maintenance-free operation. The swivel function at the fixing point as well as the **tilt/ swivel function** of the monitor adaptation offers optimum positioning of your device. The extended pivot arm is a two-part arm with central pivot point between the two arm sections. All bottom-mounted monitors have the safety feature of a **20° tilt stop**.

### Height adjustable arm

The height adjustable arm offers **full cable integration**, one-wipe clean surfaces and our **5-year warranty** on the entirety of the product. Vertically and horizontally adjustable, the arm offers optimal positioning of your device. A constant viewing angle when vertically adjusted is guaranteed by a parallel linkage. **Weight-optimized springs counter-balance** the monitor without making any adjustments. All bottom-mounted monitors have the safety feature of a **20° tilt stop**. Individual rotational stops may be integrated in any joint.

To provide the perfect combination of arm and monitor, the CIM articulated height adjustable arm has a simple quarter-turn lock to hold the arm safely in position when removing the monitor. Furthermore the arm is equipped with the unique safety feature of a slow-release gas spring. Should anybody try to remove the monitor before locking the arm in position, the arm will only rise at a slow and even tempo.

**SAFETY**

## Flush mount qube



### Monitor adaption

quick release base plate

### Colours to choose

decorative parts RAL 5013 cobalt blue / RAL 7024 graphite grey  
aluminum parts RAL 9016 traffic white / RAL 9002 grey white

### Max. load capacity support arm

18 kg / 39.7 lbs

### Max. load monitor adaptation

18 kg / 39.7 lbs

### Product weight

0.9 kg / 2.0 lbs

### Part number

S-910Q-Y.CD

Z-QR-C.D

quick release adapter plate VESA 75

### Fixings

Y | details page 30



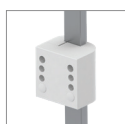
4V

Adapter for  
vertical wall channel



2F

Fixed rail clamp



3

Vertical rail clamp



3DR  
3TX

Dual vertical rail clamp



1  
1F  
1C  
1V

Fixed / universal  
pole clamp



13

Adapter for Mindray  
medical supply units



17

Adapter for Amico  
pendants & headwalls

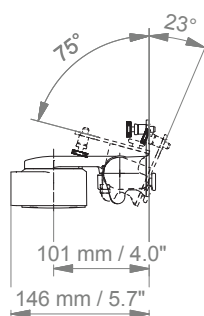


# Flush mount qube

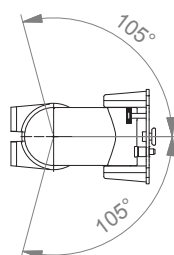
## Technical data

---

### SIDE VIEW



### TOP VIEW



# Support arm pivot qube



## Monitor adaption

quick release base plate

## Colours to choose

decorative parts RAL 5013 cobalt blue / RAL 7024 graphite grey  
aluminum parts RAL 9016 traffic white / RAL 9002 grey white

## Max. load capacity support arm

18 kg / 39.7 lbs

## Max. load monitor adaptation

18 kg / 39.7 lbs

## Product weight

240 mm / 9.5": 1.8 kg / 4.0 lbs; 300 mm / 11.8": 1.9 kg / 4.2 lbs

## Part number

A-224Q-Y.CD arm length 240 mm / 9.5"  
A-230Q-Y.CD arm length 300 mm / 11.8"  
Z-QR-C.D quick release adapter plate VESA 75

## Fixings

Y | details page 30 and 31



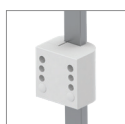
4V

Adapter for vertical wall channel



2F

Fixed rail clamp



3

Vertical rail clamp



3DR  
3TX

Dual vertical rail clamp



1  
1F  
1C  
1V

Fixed / universal pole clamp



13

Adapter for Mindray medical supply units



17

Adapter for Amico pendants & headwalls



9

Adapter for Löwenstein Medical anaesthesia machines



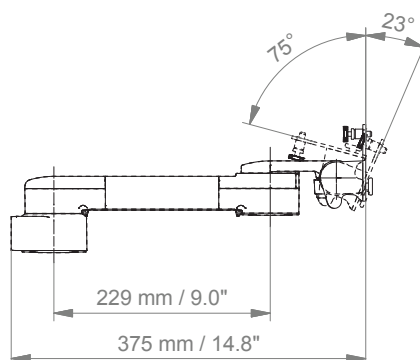
4K

Adapter for anaesthesia machines with existing side channel

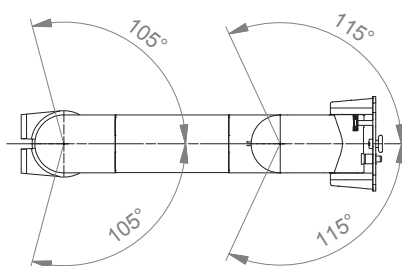
# Support arm pivot qube

Technical data – arm length 300 mm / 11.8"

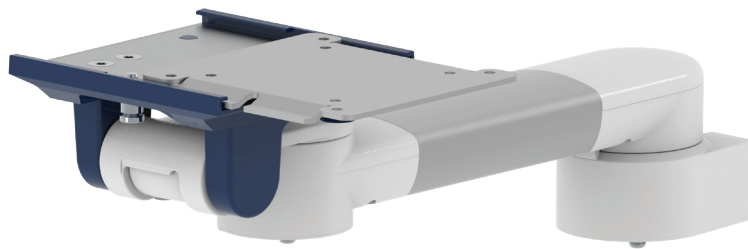
## SIDE VIEW



## TOP VIEW



## Support arm pivot cube with docking station



### Monitor adaption

5" plunge plate with VESA adapter plate

### Colours to choose

decorative parts RAL 5013 cobalt blue / RAL 7024 graphite grey  
aluminum parts RAL 9016 traffic white / RAL 9002 grey white

### Max. load capacity support arm

18 kg / 39.7 lbs

### Max. load monitor adaptation

18 kg / 39.7 lbs

### Product weight

240 mm / 9.5": 1.9 kg / 4.2 lbs    300 mm / 11.8": 2.1 kg / 4.6 lbs

### Part number

A-224AVS-Y.CD    arm length 240 mm / 9.5"

A-230AVS-Y.CD    arm length 300 mm / 11.8"

### Fixings

Y | details page 30 and 31



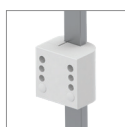
4V

Adapter for  
vertical wall channel



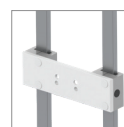
2F

Fixed rail clamp



3

Vertical rail clamp



3DR  
3TX

Dual vertical rail clamp



1  
1F  
1C  
1V

Fixed / universal  
pole clamp



13

Adapter for Mindray  
medical supply units



17

Adapter for Amico  
pendants & headwalls



9

Adapter for Löwenstein Medical  
anaesthesia machines



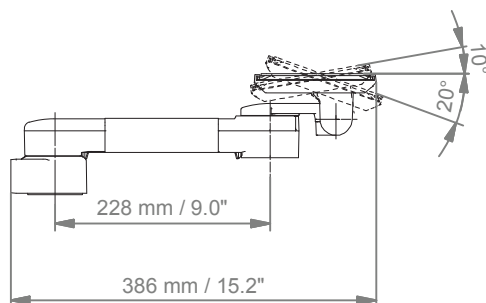
4K

Adapter for anaesthesia machines  
with existing side channel

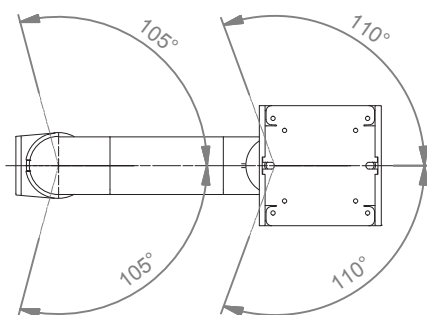
# Support arm pivot cube with docking station

Technical data – arm length 300 mm / 11.8"

## SIDE VIEW

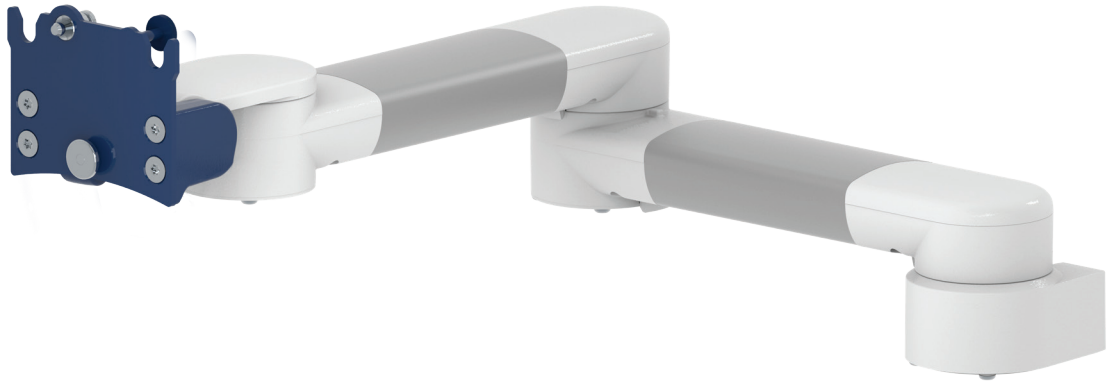


## TOP VIEW





## Extended pivot arm light duty qube



### Monitor adaption

quick release base plate

### Colours to choose

decorative parts RAL 5013 cobalt blue / RAL 7024 graphite grey  
aluminum parts RAL 9016 traffic white / RAL 9002 grey white

### Max. load capacity support arm

8 kg / 17.6 lbs

### Max. load monitor adaption

8 kg / 17.6 lbs

### Product weight

2.8 kg / 6.2 lbs

### Part number

A-33030Q-**Y**.CD

Z-QR-C.**D**

quick release adapter plate VESA 75

### Fixings

**Y** | details page 30 and 31



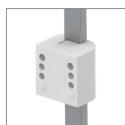
**4V**

Adapter for vertical wall channel



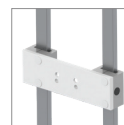
**2F**

Fixed rail clamp



**3**

Vertical rail clamp



**3DR  
3TX**

Dual vertical rail clamp



**1  
1F  
1C  
1V**

Fixed / universal pole clamp



**13**

Adapter for Mindray medical supply units



**17**

Adapter for Amico pendants & headwalls



**9**

Adapter for Löwenstein Medical anaesthesia machines



**4K**

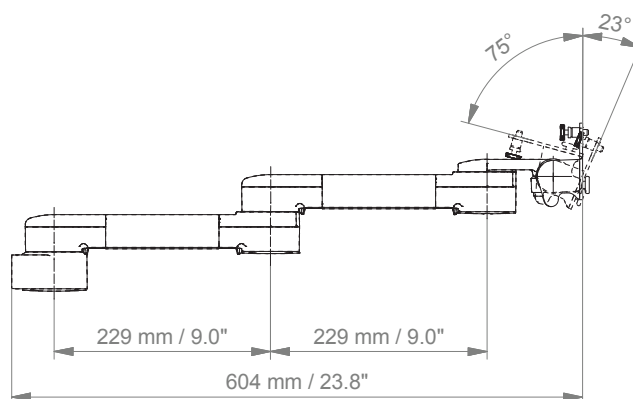
Adapter for anaesthesia machines with existing side channel

# Extended pivot arm light duty qube

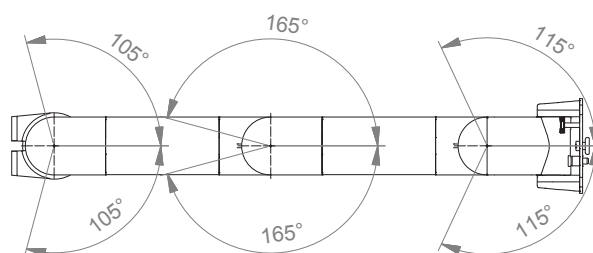
## Technical data

---

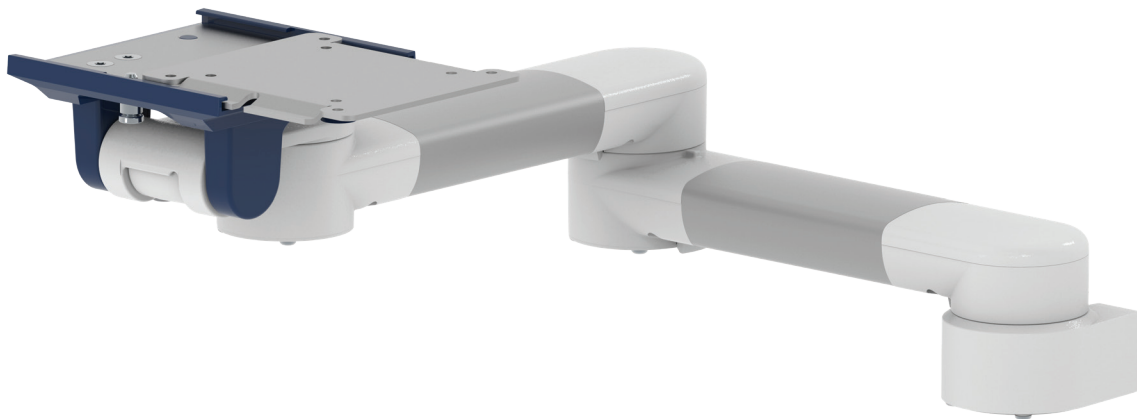
### SIDE VIEW



### TOP VIEW



## Extended pivot arm light duty qube with docking station



### Monitor adaption

5" plunge plate with VESA adapter plate

### Colours to choose

decorative parts RAL 5013 cobalt blue / RAL 7024 graphite grey  
aluminum parts RAL 9016 traffic white / RAL 9002 grey white

### Max. load capacity support arm

8 kg / 17.6 lbs

### Max. load monitor adaptation

8 kg / 17.6 lbs

### Product weight

3.0 kg / 6.6 lbs

### Part number

A-33030AVS-Y.CD

### Fixings

Y | details page 30 and 31



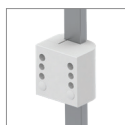
4V

Adapter for  
vertical wall channel



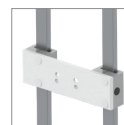
2F

Fixed rail clamp



3

Vertical rail clamp



3DR  
3TX

Dual vertical rail clamp



1  
1F  
1C  
1V

Fixed / universal  
pole clamp



13

Adapter for Mindray  
medical supply units



17

Adapter for Amico  
pendants & headwalls



9

Adapter for Löwenstein Medical  
anaesthesia machines



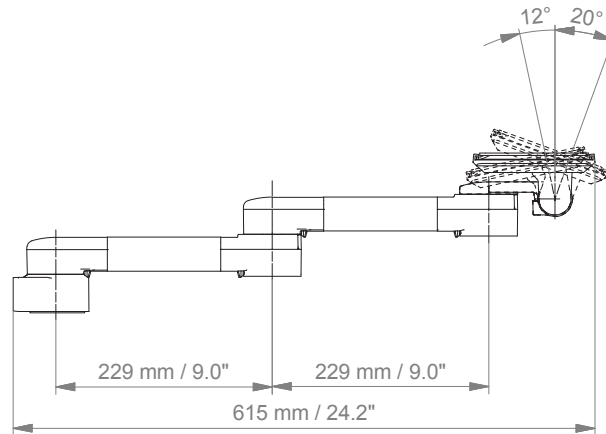
4K

Adapter for anaesthesia machines  
with existing side channel

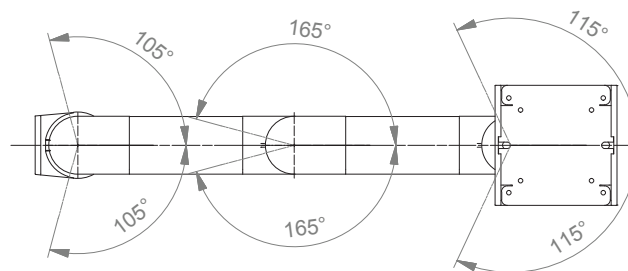
# Extended pivot arm light duty qube with docking station

## Technical data

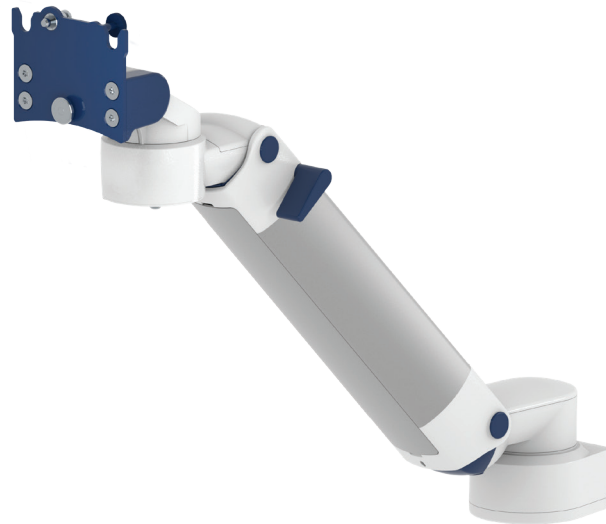
### SIDE VIEW



### TOP VIEW



## Height adjustable arm qube



### Monitor adaption

quick release base plate

### Height adjustment

slow-flowing spring, parallel linkage for a constant viewing angle

### Colours to choose

decorative parts RAL 5013 cobalt blue / RAL 7024 graphite grey  
aluminum parts RAL 9016 traffic white / RAL 9002 grey white

### Max. load capacity support arm

22 kg / 48.5 lbs

### Max. load monitor adaptation

18 kg / 39.7 lbs

### Product weight

3.5 kg / 7.7 lbs

### Balancing range

950 N (4-9 kg / 8.8-19.8 lbs)

### Part number

A-431Q-Y.CD\_95

Z-QR-C.D quick release adapter plate VESA 75

### Fixings

Y | details page 30 and 31



4V

Adapter for  
vertical wall channel



2F

Fixed rail clamp



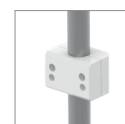
3

Vertical rail clamp



3DR  
3TX

Dual vertical rail clamp



1  
1F  
1C  
1V

Fixed / universal  
pole clamp



13

Adapter for Mindray  
medical supply units



17

Adapter for Amico  
pendants & headwalls



9

Adapter for Löwenstein Medical  
anaesthesia machines



4K

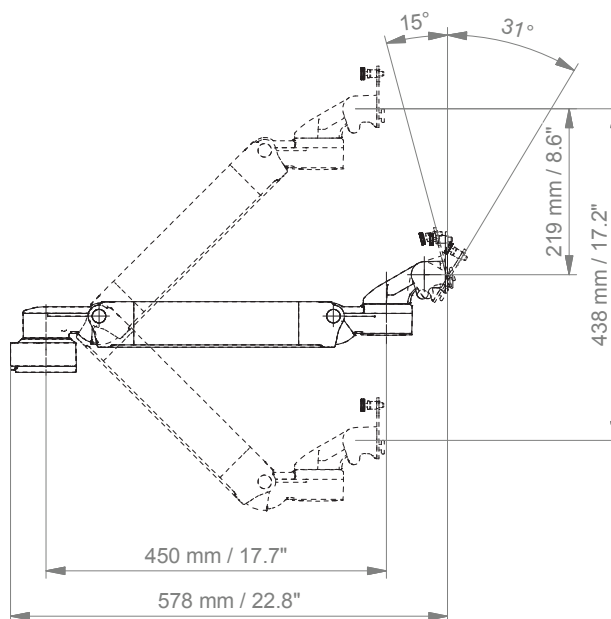
Adapter for anaesthesia machines  
with existing side channel



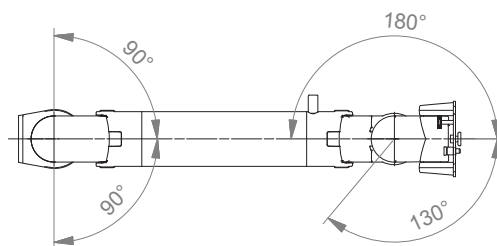
# Height adjustable arm qube

## Technical data

### SIDE VIEW



### TOP VIEW



## Height adjustable arm qube with docking station



### Monitor adaption

5" plunge plate with VESA adapter plate

### Height adjustment

slow-flowing spring, parallel linkage for a constant viewing angle

### Colours to choose

decorative parts RAL 5013 cobalt blue / RAL 7024 graphite grey  
aluminum parts RAL 9016 traffic white / RAL 9002 grey white

### Max. load capacity support arm

22 kg / 48.5 lbs

### Max. load monitor adaptation

18 kg / 39.7 lbs

### Product weight

3.5 kg / 7.7 lbs

### Balancing range

950 N (4-9 kg / 8.8-19.8 lbs)

### Part number

A-431AVS-**Y**.CD\_95

### Fixings

**Y** | details page 30 and 31



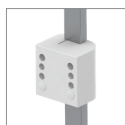
**4V**

Adapter for vertical wall channel



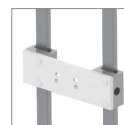
**2F**

Fixed rail clamp



**3**

Vertical rail clamp



**3DR  
3TX**

Dual vertical rail clamp



**1  
1F  
1C  
1V**

Fixed / universal pole clamp



**13**

Adapter for Mindray medical supply units



**17**

Adapter for Amico pendants & headwalls



**9**

Adapter for Löwenstein Medical anaesthesia machines



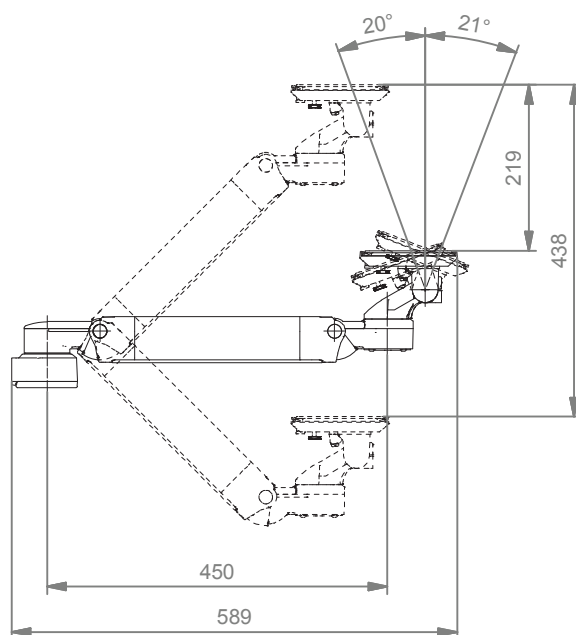
**4K**

Adapter for anaesthesia machines with existing side channel

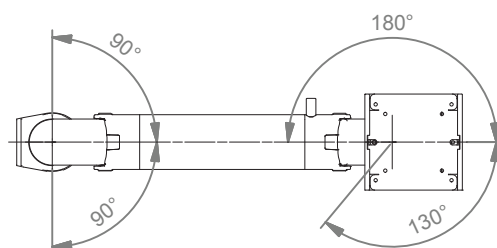
# Height adjustable arm qube with docking station

## Technical data

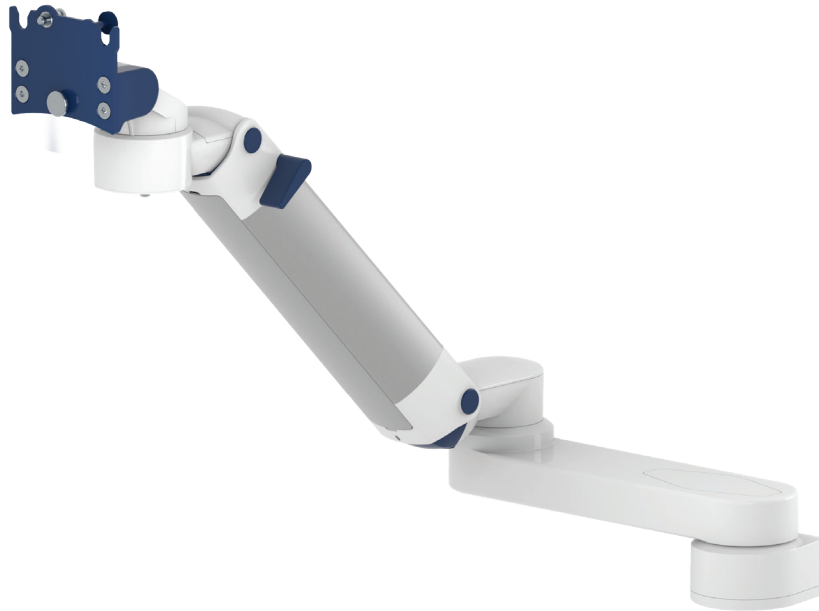
### SIDE VIEW



### TOP VIEW



## Extended height adjustable arm qube



### Monitor adaption

quick release base plate

### Height adjustment

slow-flowing spring, parallel linkage for a constant viewing angle

### Colours to choose

decorative parts RAL 5013 cobalt blue / RAL 7024 graphite grey  
aluminum parts RAL 9016 traffic white / RAL 9002 grey white

### Max. load capacity support arm

22 kg / 48.5 lbs

### Max. load monitor adaptation

18 kg / 39.7 lbs

### Product weight

5.0 kg / 11.0 lbs

### Balancing range

950 N (4-9 kg / 8.8-19.8 lbs)

### Part number

A-73130Q-Y.CD\_95

Z-QR-C.D quick release adapter plate VESA 75

### Fixings

Y | details page 30 and 31



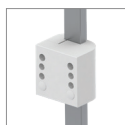
4V

Adapter for  
vertical wall channel



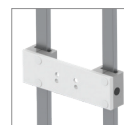
2F

Fixed rail clamp



3

Vertical rail clamp



3DR  
3TX

Dual vertical rail clamp



1  
1F  
1C  
1V

Fixed / universal  
pole clamp



13

Adapter for Mindray  
medical supply units



17

Adapter for Amico  
pendants & headwalls



9

Adapter for Löwenstein Medical  
anaesthesia machines



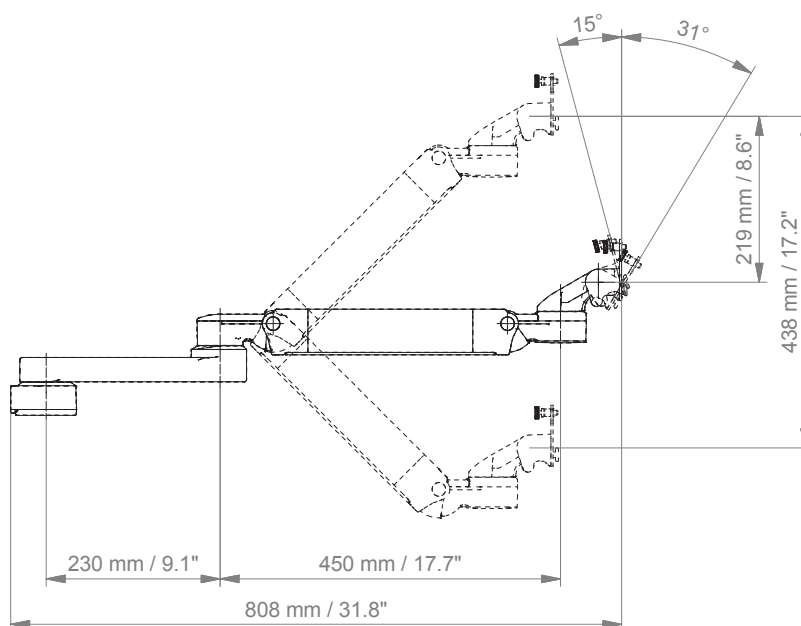
4K

Adapter for anaesthesia machines  
with existing side channel

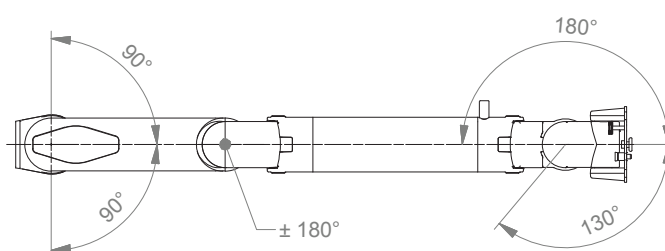
# Extended height adjustable arm qube

## Technical data

### SIDE VIEW

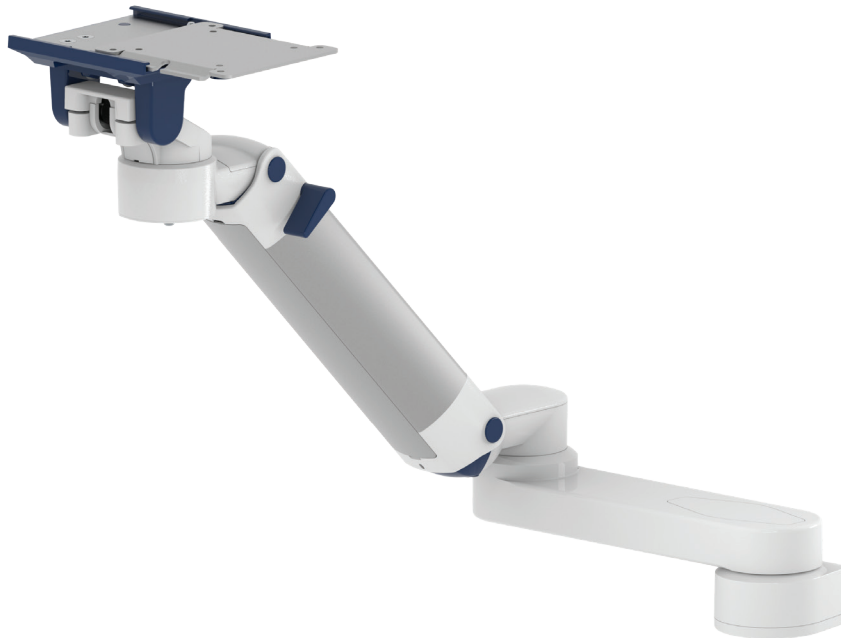


### TOP VIEW





## Extended height adjustable arm qube with docking station



### Monitor adaption

5" plunge plate with VESA adapter plate

### Height adjustment

slow-flowing spring, parallel linkage for a constant viewing angle

### Colours to choose

decorative parts RAL 5013 cobalt blue / RAL 7024 graphite grey  
aluminum parts RAL 9016 traffic white / RAL 9002 grey white

### Max. load capacity support arm

22 kg / 48.5 lbs

### Max. load monitor adaptation

18 kg / 39.7 lbs

### Product weight

4.9 kg / 10.8 lbs

### Balancing range

950 N (4-9 kg / 8.8-19.8 lbs)

### Part number

A-73130AVS-Y.CD\_95

### Fixings

Y | details page 30 and 31



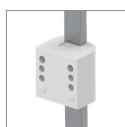
4V

Adapter for  
vertical wall channel



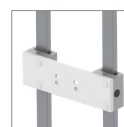
2F

Fixed rail clamp



3

Vertical rail clamp



3DR  
3TX

Dual vertical rail clamp



1  
1F  
1C  
1V

Fixed / universal  
pole clamp



13

Adapter for Mindray  
medical supply units



17

Adapter for Amico  
pendants & headwalls



9

Adapter for Löwenstein Medical  
anaesthesia machines



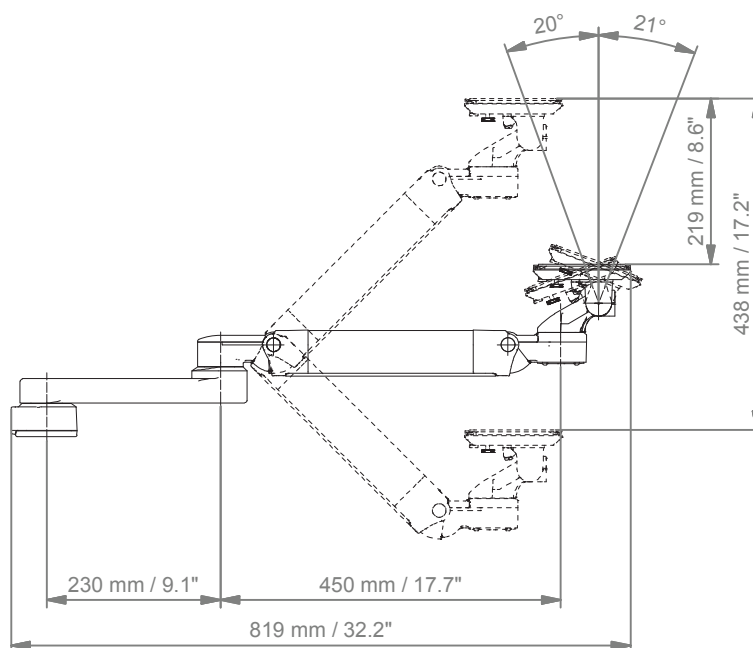
4K

Adapter for anaesthesia machines  
with existing side channel

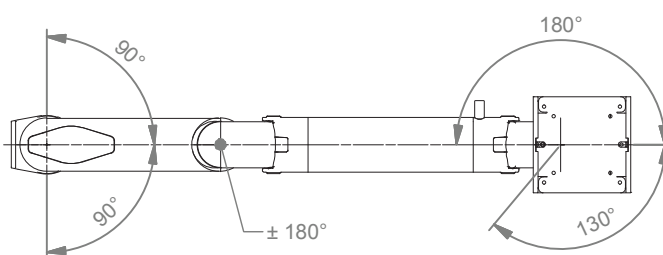
# Extended height adjustable arm qube with docking station

## Technical data

### SIDE VIEW



### TOP VIEW



## Cart light duty qube



### Monitor adaption

quick release base plate

### Accessories

5-star base aluminum base with counter weight  
double wheel castors,  $\varnothing$  100 mm / 3.9", 2 lockable  
column to accept components and accessories on opposite sides

### Colours to choose

decorative parts	RAL 5013 cobalt blue / RAL 7024 graphite grey
base	RAL 9016 traffic white / RAL 5013 cobalt blue
handle	RAL 9016 traffic white / RAL 5013 cobalt blue / RAL 7024 graphite grey

### Max. load capacity

14 kg / 30.9 lbs

### Optional accessories

basket big 300 x 200 x 180 mm / 11.8 x 7.9 x 7.1"  
basket small 200 x 150 x 100 mm / 7.9 x 5.9 x 3.9"  
handle

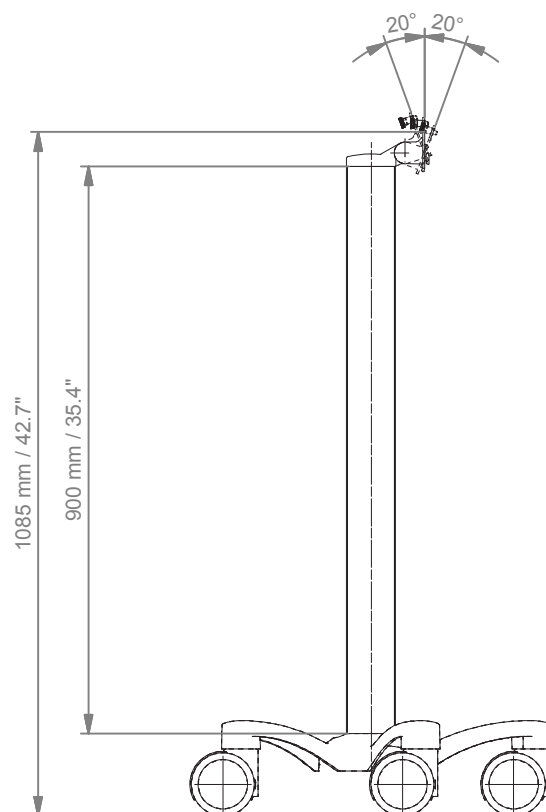
### Part number

cart	R-002Q. <b>CD</b>
quick release adapter plate VESA 75	Z-QR-C. <b>D</b>
basket big	Z-51-4Z
basket small	Z-52-4Z
handle	Z-HD-4. <b>C1</b>

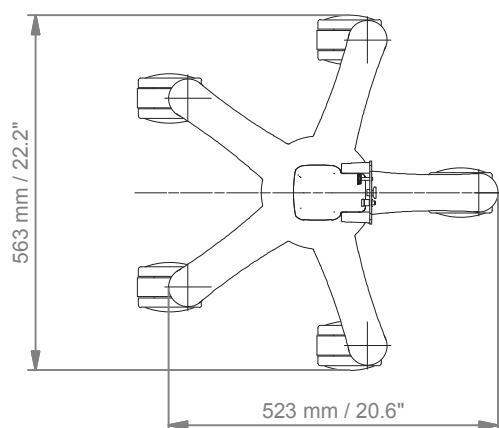
# Cart light duty qube

## Technical data

### SIDE VIEW



### TOP VIEW



## Cart light duty qube with docking station



### Monitor adaption

5" plunge plate with VESA adapter plate

### Accessories

5-star base aluminum base with counter weight  
double wheel castors,  $\varnothing$  100 mm / 3.9", 2 lockable  
column to accept components and accessories on opposite sides

### Colours to choose

decorative parts	RAL 5013 cobalt blue / RAL 7024 graphite grey
base	RAL 9016 traffic white / RAL 5013 cobalt blue
handle	RAL 9016 traffic white / RAL 5013 cobalt blue / RAL 7024 graphite grey

### Max. load capacity

14 kg / 30.9 lbs

### Optional accessories

basket big 300 x 200 x 180 mm / 11.8 x 7.9 x 7.1"  
basket small 200 x 150 x 100 mm / 7.9 x 5.9 x 3.9"  
handle

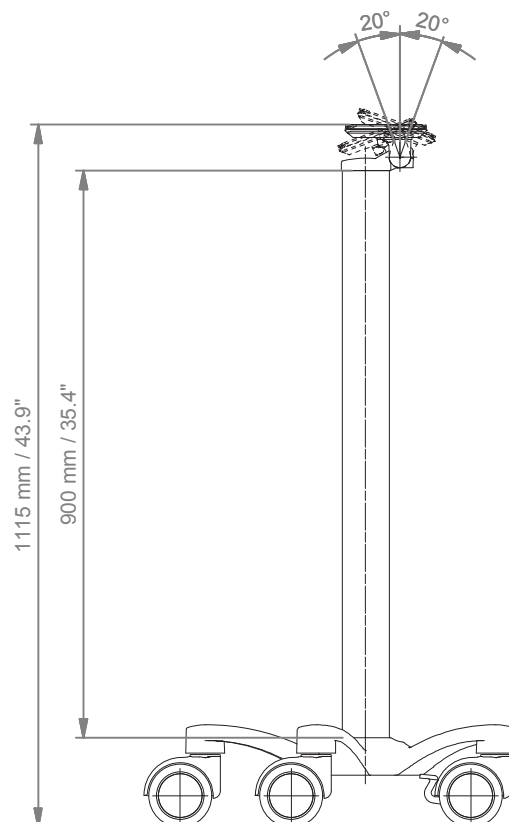
### Part number

cart	R-002AVS.CD
basket big	Z-51-4Z
basket small	Z-52-4Z
handle	Z-HD-4.C1

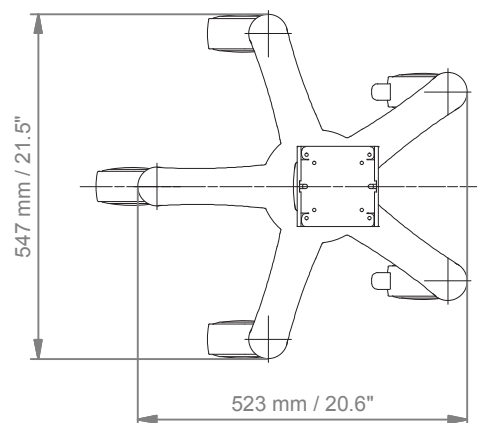
# Cart light duty qube with docking station

## Technical data

### SIDE VIEW











### TOP VIEW





## Fixings



Illustration	Description	Notes	Part no.
	Adapter for vertical wall channel	To mount to CIM wall channel (compatible with GCX channel) Please order separately: CIM wall channel, see catalogue accessoires	4V
	Fixed rail clamp	To mount to horizontal European rails 10 x 25, 8 x 35, 10 x 30, 10 x 50 mm	2F
	Vertical rail clamp	To mount to vertical European rail 10 x 25 mm	3
	Dual vertical rail clamp	To mount to two parallel vertical European rails 10 x 25 mm Distance between rails 150 mm / 5.9", e.g. Dräger pendant Distance between rails 225 mm / 8.9", e.g. Trilux pendant	3DR 3TX
	Fixed pole clamp	To mount to pole ø 25 mm / 1.0" To mount to pole ø 35 mm / 1.4" To mount to pole ø 38 mm / 1.5"	1 1F 1C
	Universal pole clamp	V-block to mount to pole ø 23 - 40 mm / 0.9 - 1.6"	1V
	Adapter medical supply units	For Mindray medical supply units	13
	Adapter pendants & headwalls	For Amico pendants & headwalls	17

## Fixings for anaesthesia machines



Illustration	Description	Notes	Part no.
	Adapter for Löwenstein Medical anaesthesia machines	Adapter for Leon / Leon plus	9
	Adapter for anaesthesia machines (all suppliers)	H 80 mm / 3.1" With existing side channel	4K
<b>If your anaesthesia machine does not have a side channel already mounted to the machine, please order the following in addition to 4K:</b>			
	Adapter for Dräger	Dräger Primus / Julian / Cato / Fabius GS / Zeus side channel adapter L 127 mm / 5" side channel adapter L 320 mm / 12.6"	DR-J01 DR-J02
	Adapter for GE	GE Avance / Aespire / Aestiva side channel adapter L 200 mm / 7.9"	DX-AES-01



CIM med GmbH

Euro-Industriepark  
Margot-Kalinke-Str. 9  
80939 Munich / Germany

T +49 89. 978 94 08-0  
F +49 89. 978 94 08-29  
M [info@cim-med.com](mailto:info@cim-med.com)

[www.cim-med.com](http://www.cim-med.com)

