



MOUNTING REFERENCE GUIDE

# Mindray Monitoring for Quick Release Mounting Adapter

CIM Cable Integrated Mounting System



THINK BEFORE  
YOU PRINT



# Content

General notes	3
How to create part numbers	4
Product highlights	6
Support arm pivot	7
Extended pivot arm light duty	9
Extended pivot arm heavy duty	11
Height adjustable arm	13
Extended height adjustable arm	15
High position height adjustable arm	17
Extended high position height adjustable arm	19
Counter top	21
Cart light duty	23
Fixings	25
Monitor-specific mounting adapter	27

## General notes

### Mounting adapter (quick release)

The monitor adaption is prepared to accept the mounting adapter from Mindray and is suitable for the following Mindray monitors: **BeneVision series: N12, iMEC, uMEC, iPM, ePM** and **BeneView series: T5, T8, T9**.

Please note that the mounting adapter (quick release) has to be ordered separately from Mindray. For descriptions and part numbers, please refer to page 26.

### 5" Plunge plate

Please see mounting reference guide: 5" plunge plate adaption.

The 5" plunge plate is suitable for the following Mindray monitors: **BeneVision series: N12, iMEC, uMEC, iPM, ePM**, **BeneView series: T5, T8, T9** and **VS series VS-600, VS-900, VS 8, VS 9**.

Please note that the mounting adapter has to be ordered separately from Mindray or CIM med®. For descriptions and part numbers, please refer to catalogue: Monitor-specific mounting adapter Mindray.

### Components' grounding

All arms with integrated cable management are equipped with **component grounding**. No grounding is required for arms with external or semi-integrated cable management with cables not being led through joints.

### Load capacity

All **height adjustable arms** have a load capacity of 22 kg / 48.5 lbs. Rear mounted monitor adaptations and horizontally

mounted 5" plunge plates accept a maximum monitor weight of 18 kg / 39.7 lbs. An additional 4 kg / 8.8 lbs may be mounted on a down post underneath the front swivel part. Depending on material and tensile factor all weight indications have a 4-fold and/ or 6-fold safety factor according to IEC 60601-1 standards.

### Custom-designed solutions and MRI applications

Please contact us for **custom-designed** solutions.

### Product marking

All CIM products are CE marked. As **medical product risk class 1** they are conform with the regulations (EU) 2017/745 (MDR) and IEC 60601-1. Other standards of the IEC 60601 series are not applicable to our products, regardless of their version.

**MD** A stand-alone product that is already classified as a medical product class 1 before being integrated into an overall medical device. The product is CE-marked. A declaration of conformity is available.

**MD** Accessories or spare parts that have no independent function and are therefore not subject to the MDR. These products are not CE-marked. A declaration of conformity is not required.

### Warranty

All CIM products have a 5-year warranty to be free of defects in material and functionality from the date of delivery.



# How to create part numbers

Part numbers can be easily created by following the steps below:

Please replace the letters in **green** with the part no. code as per your requirements.

## 1. Components' grounding:

A = grounded

## 2. Choose the arm version required:

224MD / 230MD = support arm pivot  
 33030MD = extended pivot arm light duty  
 H33030MD = extended pivot arm heavy duty  
 431MD = height adjustable arm  
 73130MD = extended height adjustable arm  
 531MD = high position height adjustable arm  
 83130MD = extended high position height adjustable arm

## 3. Specify where you want to mount the arm and select the fixing (Y):

1V = pole ø 23 - 40 mm / 0.9 - 1.6"  
 1 = pole ø 25 mm / 1.0"  
 1B = pole ø 30 mm / 1.2"  
 1F = pole ø 35 mm / 1.4"  
 1C = pole ø 38 mm / 1.5"  
 2F = horizontal rails 10 x 25, 8 x 35, 10 x 30, 10 x 50 mm  
 3 = vertical rail 10 x 25 mm  
 4S = vertical wall channel  
 9 = Löwenstein Medical / ITD / mounting channel  
 13 = Mindray medical supply units  
 17 = Amico pendants & headwalls



## How to create part numbers

### 4. Choose the colour requested for decorative parts (C):

gr	=	RAL 7024 (graphite grey)
bl	=	RAL 5013 (cobalt blue)

### 5. Choose the colour requested for the aluminium die-cast parts (D):

1	=	RAL 9016 (traffic white)
2	=	RAL 9002 (grey white)

### 6. Specify the spring depending on the weight of your monitor/ device - only with height adjustable arms (X):

60	=	2 - 5 kg / 4.4 - 11 lbs
95	=	4 - 9 kg / 8.8 - 19.8 lbs
110	=	4.5 - 12.5 kg / 9.9 - 27.6 lbs
130	=	7.5 - 13 kg / 16.5 - 28.7 lbs
160	=	12.5 - 19 kg / 27.6 - 41.9 lbs
175	=	13 - 16 kg / 28.7 - 35.3 lbs
220	=	16 - 22 kg / 35.3 - 48.5 lbs

## Example

01 Grounding		02 Arm version		03 Fixing		04 & 05 Colour		06 Spring tension
A	-	431MD	-	Y	.	CD	-	X
A	-	431MD	-	4S	.	gr1	-	95

## Product highlights

---

### Non-height adjustable arm

Pivot and extended pivot arms offer **full cable integration** and easy cleaning for **infection control** in all critical care areas in the clinical environment. Our **5-years warranty** guarantees reliable, trouble-free and maintenance-free operation. The swivel function at the fixing point as well as the **tilt/ swivel function** of the monitor adaptation offers optimum positioning of your device. The extended pivot arm is a two-part arm with central pivot point between the two arm sections. All bottom-mounted monitors have the safety feature of a **20° tilt stop**.

### Height adjustable arm

The height adjustable arm offers **full cable integration**, one-wipe clean surfaces and our **5-year warranty** on the entirety of the product. Vertically and horizontally adjustable, the arm offers optimal positioning of your device. A constant viewing angle when vertically adjusted is guaranteed by a parallel linkage. **Weight-optimized springs counter-balance** the monitor without making any adjustments. All bottom-mounted monitors have the safety feature of a **20° tilt stop**. Individual rotational stops may be integrated in any joint.

To provide the perfect combination of arm and monitor, the CIM articulated height adjustable arm has a simple quarter-turn lock to hold the arm safely in position when removing the monitor. Furthermore the arm is equipped with the unique safety feature of a slow-release gas spring. Should anybody try to remove the monitor before locking the arm in position, the arm will only rise at a slow and even tempo.

**SAFETY**

# Support arm pivot

MD



## Monitor adaption

prepared to accept Mindray mounting adapter

## Colours to choose **CD**

decorative parts RAL 5013 cobalt blue / RAL 7024 graphite grey  
aluminum parts RAL 9016 traffic white / RAL 9002 grey white

## Max. load capacity support arm

18 kg / 39.7 lbs

## Max. load monitor adaptation

18 kg / 39.7 lbs

## Product weight

arm type 240 arm type 300  
1.8 kg / 4.0 lbs 1.9 kg / 4.2 lbs

## Part number

arm type 240 arm type 300  
A-224MD-Y.CD A-230MD-Y.CD

## Fixings **Y**

details page 25



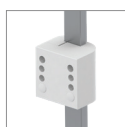
4S

Adapter for  
vertical wall channel



2F

Horizontal rail clamp



3

Vertical rail clamp



1V

Universal pole clamp



1  
1B  
1F  
1C

Fixed pole clamp



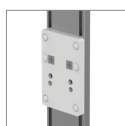
13

Adapter for Mindray  
medical supply units



17

Adapter for Amico  
pendants & headwalls



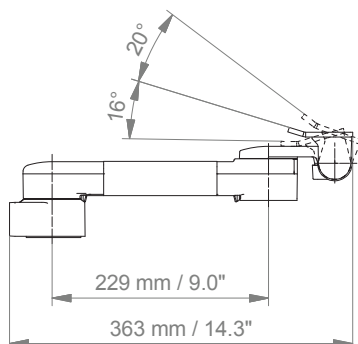
9

Adapter for Löwenstein Medical /  
ITD / mounting channel

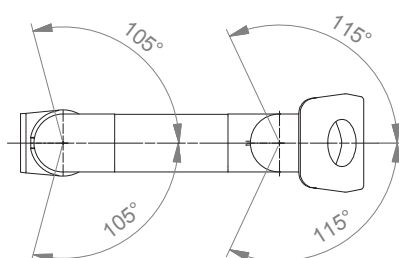
# Support arm pivot

Technical data - arm type 300

## SIDE VIEW



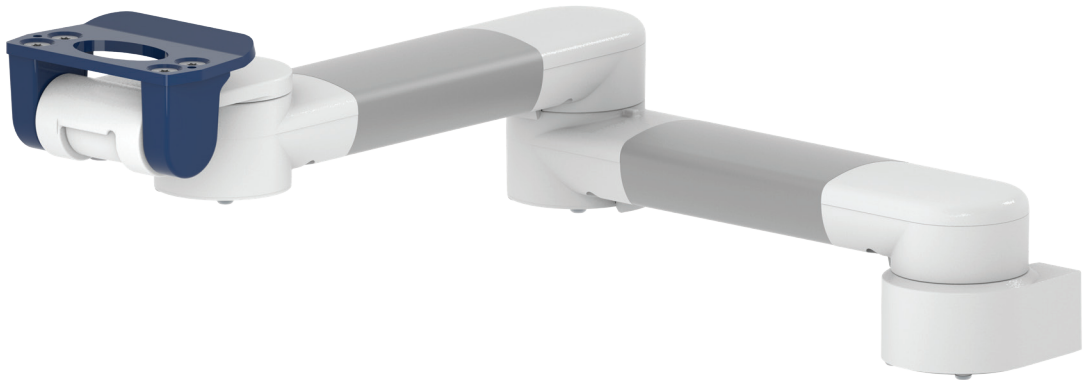
## TOP VIEW





# Extended pivot arm light duty

MD



## Monitor adaption

prepared to accept Mindray mounting adapter

## Colours to choose CD

decorative parts RAL 5013 cobalt blue / RAL 7024 graphite grey  
aluminum parts RAL 9016 traffic white / RAL 9002 grey white

## Max. load capacity support arm

8 kg / 17.6 lbs

## Max. load monitor adaptation

8 kg / 17.6 lbs

## Product weight

2.8 kg / 6.2 lbs

## Part number

A-33030MD-Y.CD

## Fixings Y

details page 25



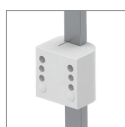
4S

Adapter for  
vertical wall channel



2F

Horizontal rail clamp



3

Vertical rail clamp



1V

Universal pole clamp



1  
1B  
1F  
1C

Fixed pole clamp



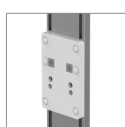
13

Adapter for Mindray  
medical supply units



17

Adapter for Amico  
pendants & headwalls



9

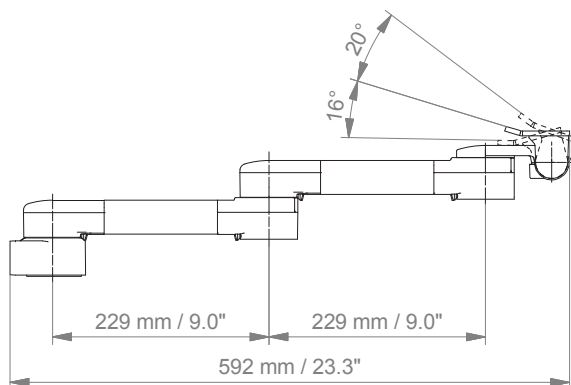
Adapter for Löwenstein Medical /  
ITD / mounting channel

# Extended pivot arm light duty

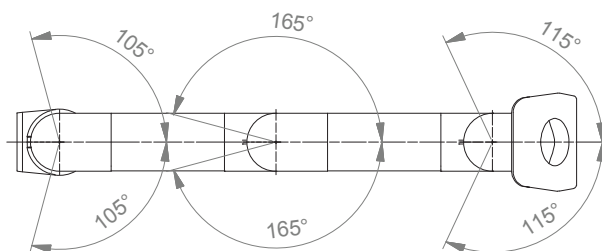
## Technical data

---

### SIDE VIEW

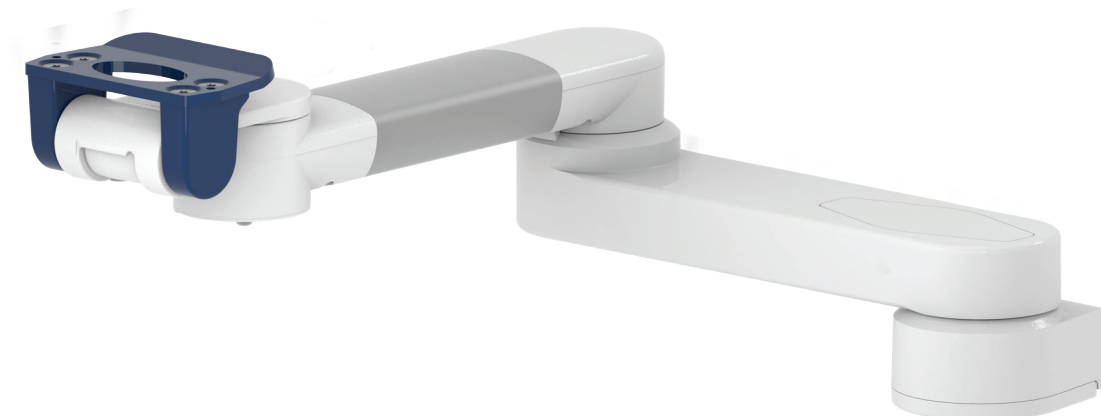


### TOP VIEW



## Extended pivot arm heavy duty

MD



### Monitor adaption

prepared to accept Mindray mounting adapter

### Colours to choose **CD**

decorative parts RAL 5013 cobalt blue / RAL 7024 graphite grey

aluminum parts RAL 9016 traffic white / RAL 9002 grey white

### Max. load capacity support arm

18 kg / 39.7 lbs

### Max. load monitor adaptation

18 kg / 39.7 lbs

### Product weight

3 kg / 6.6 lbs

### Part number

A-H33030MD-**Y.CD**

### Fixings **Y**

details page 25



4S

Adapter for  
vertical wall channel



2F

Horizontal rail clamp



3

Vertical rail clamp



1V

Universal pole clamp



1  
1B  
1F  
1C

Fixed pole clamp



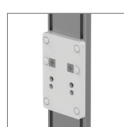
13

Adapter for Mindray  
medical supply units



17

Adapter for Amico  
pendants & headwalls



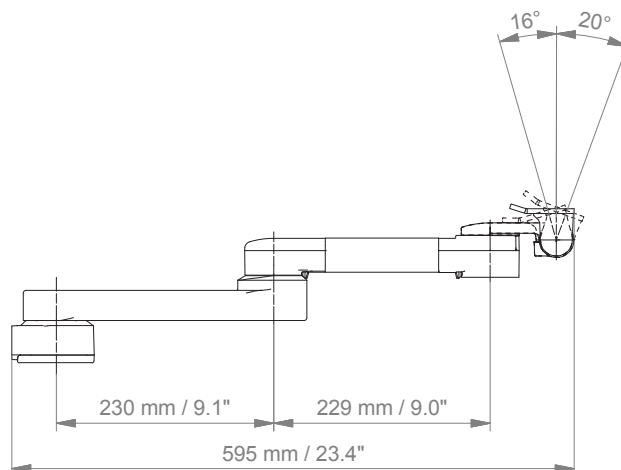
9

Adapter for Löwenstein Medical /  
ITD / mounting channel

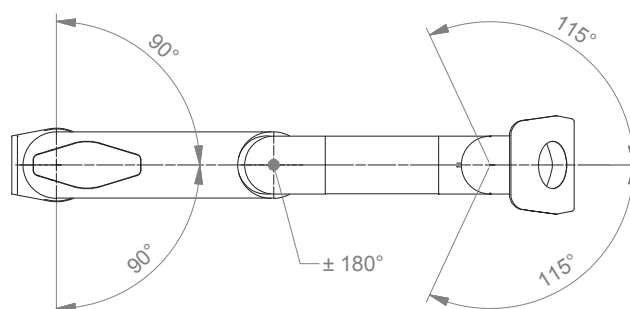
# Extended pivot arm heavy duty

## Technical data

### SIDE VIEW



### TOP VIEW



## Height adjustable arm

MD



### Monitor adaption

prepared to accept Mindray mounting adapter

### Height adjustment

slow-flowing spring, parallel linkage for a constant viewing angle

### Colours to choose CD

decorative parts RAL 5013 cobalt blue / RAL 7024 graphite grey  
aluminum parts RAL 9016 traffic white / RAL 9002 grey white

### Max. load capacity support arm

22 kg / 48.5 lbs

### Max. load monitor adaptation

22 kg / 48.5 lbs

### Product weight

3.8 kg / 8.4 lbs

### Balancing range X

600 N (2-5 kg / 4.4-11 lbs); 950 N (4-9 kg / 8.8-19.8 lbs); 1100 N (4.5-12.5 kg / 9.9-27.6 lbs); 1300 N (7.5-13 kg / 16.5-28.7 lbs); 1600 N (12.5-19 kg / 27.6-41.9 lbs); 1750 N (13-16 kg / 28.7-35.3 lbs); 2200 N (16-22 kg / 35.3-48.5 lbs)

### Part number

A-431MD-Y.CD\_X

### Fixings Y

details page 25



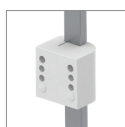
4S

Adapter for vertical wall channel



2F

Horizontal rail clamp



3

Vertical rail clamp



1V

Universal pole clamp



1  
1B  
1F  
1C

Fixed pole clamp



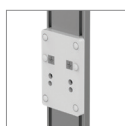
13

Adapter for Mindray medical supply units



17

Adapter for Amico pendants & headwalls



9

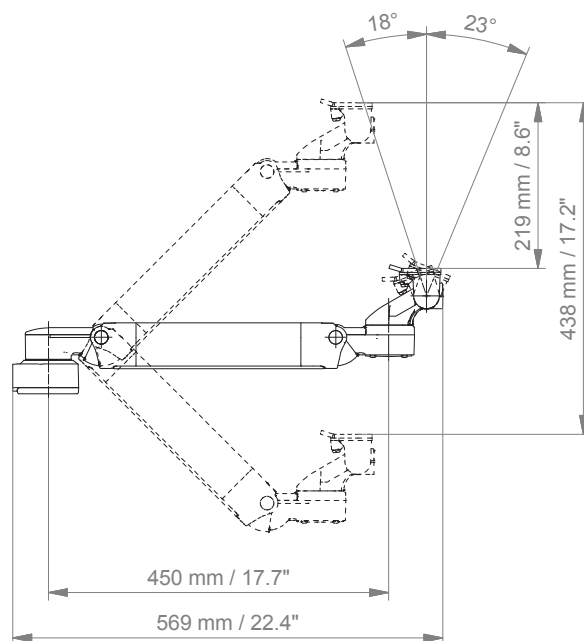
Adapter for Löwenstein Medical / ITD / mounting channel



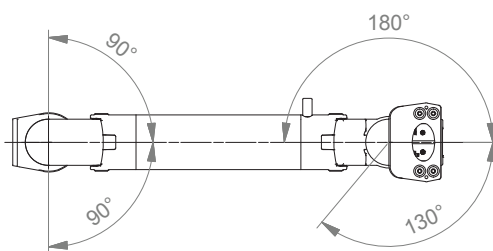
# Height adjustable arm

## Technical data

### SIDE VIEW



### TOP VIEW



## Extended height adjustable arm

MD



### Monitor adaption

prepared to accept Mindray mounting adapter

### Height adjustment

slow-flowing spring, parallel linkage for a constant viewing angle

### Colours to choose **CD**

decorative parts RAL 5013 cobalt blue / RAL 7024 graphite grey  
aluminum parts RAL 9016 traffic white / RAL 9002 grey white

### Max. load capacity support arm

22 kg / 48.5 lbs

### Max. load monitor adaptation

22 kg / 48.5 lbs

### Product weight

4.9 kg / 10.8 lbs

### Balancing range **X**

600 N (2-5 kg / 4.4-11 lbs); 950 N (4-9 kg / 8.8-19.8 lbs); 1100 N (4.5-12.5 kg / 9.9-27.6 lbs); 1300 N (7.5-13 kg / 16.5-28.7 lbs); 1600 N (12.5-19 kg / 27.6-41.9 lbs); 1750 N (13-16 kg / 28.7-35.3 lbs); 2200 N (16-22 kg / 35.3-48.5 lbs)

### Part number

A-73130MD-**Y****CD**\_X

### Fixings **Y**

details page 25



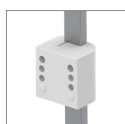
4S

Adapter for vertical wall channel



2F

Horizontal rail clamp



3

Vertical rail clamp



1V

Universal pole clamp



1  
1B  
1F  
1C

Fixed pole clamp



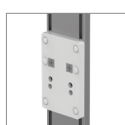
13

Adapter for Mindray medical supply units



17

Adapter for Amico pendants & headwalls



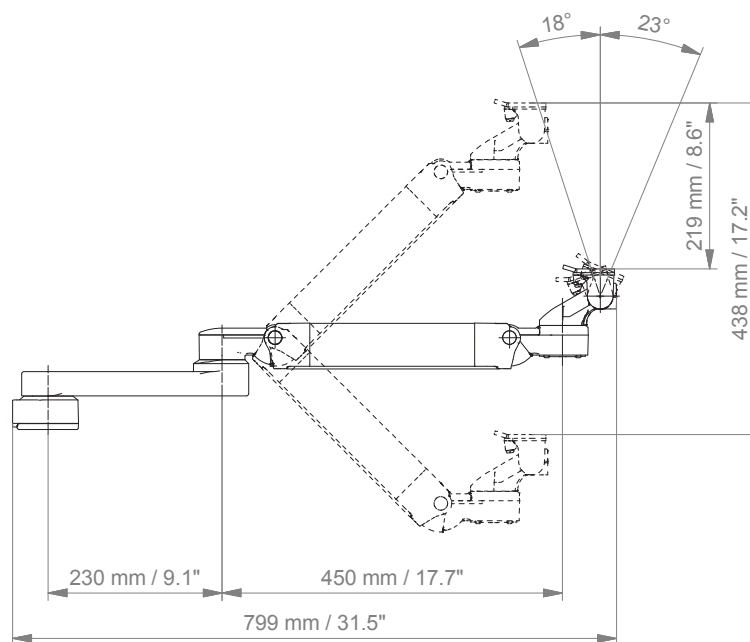
9

Adapter for Löwenstein Medical / ITD / mounting channel

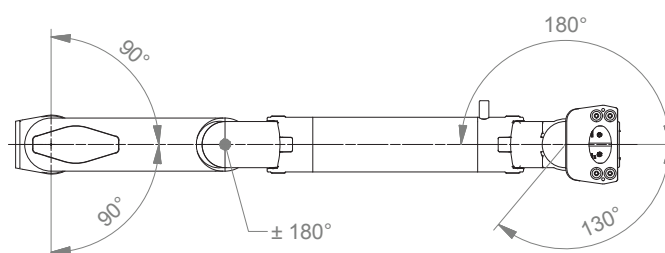
# Extended height adjustable arm

## Technical data

### SIDE VIEW

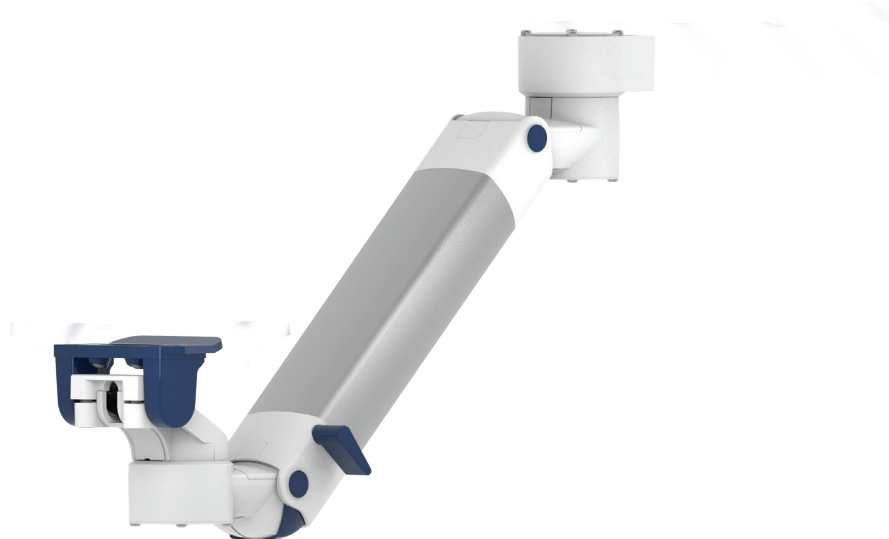


### TOP VIEW



# High position height adjustable arm

MD



## Monitor adaption

prepared to accept Mindray mounting adapter

## Height adjustment

slow-flowing spring, parallel linkage for a constant viewing angle

## Colours to choose CD

decorative parts RAL 5013 cobalt blue / RAL 7024 graphite grey  
aluminum parts RAL 9016 traffic white / RAL 9002 grey white

## Max. load capacity support arm

22 kg / 48.5 lbs

## Max. load monitor adaptation

22 kg / 48.5 lbs

## Product weight

4.2 kg / 9.3 lbs

## Balancing range X

600 N (2-5 kg / 4.4-11 lbs); 950 N (4-9 kg / 8.8-19.8 lbs); 1100 N (4.5-12.5 kg / 9.9-27.6 lbs); 1300 N (7.5-13 kg / 16.5-28.7 lbs); 1600 N (12.5-19 kg / 27.6-41.9 lbs); 1750 N (13-16 kg / 28.7-35.3 lbs); 2200 N (16-22 kg / 35.3-48.5 lbs)

## Part number

A-531MD-Y.CD\_X

## Fixings Y

details page 25



4S

Adapter for  
vertical wall channel



3

Vertical rail clamp



1V

Universal pole clamp



1

1B

1F

1C

Fixed pole clamp



13

Adapter for Mindray  
medical supply units



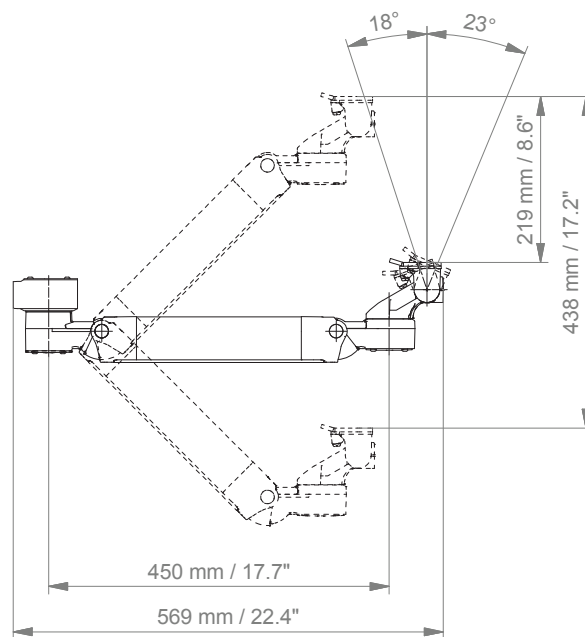
17

Adapter for Amico  
pendants & headwalls

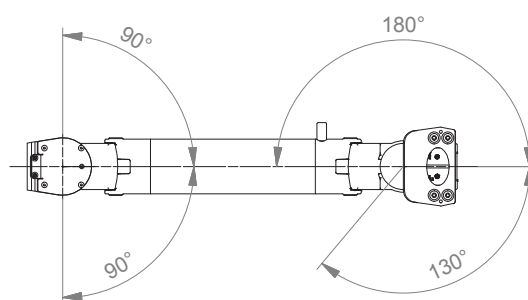
# High position height adjustable arm

## Technical data

### SIDE VIEW



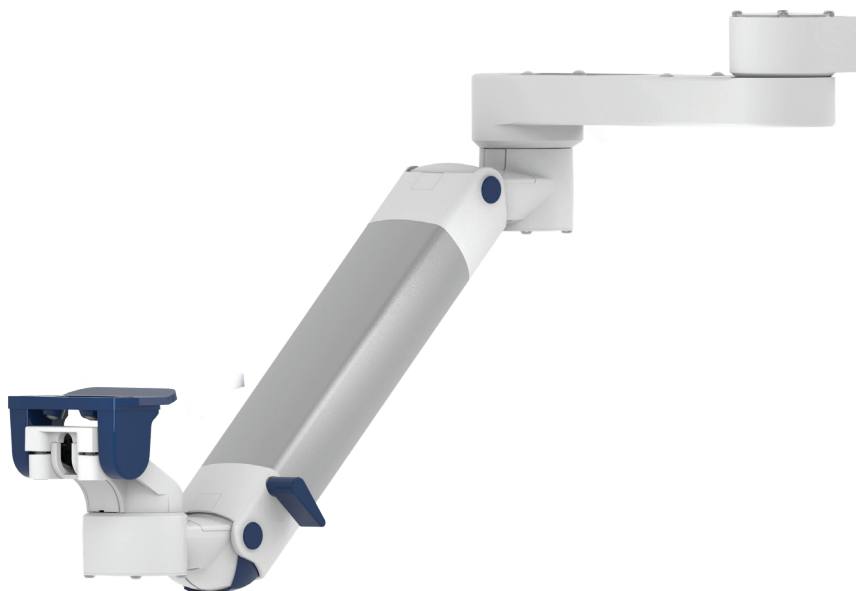
### TOP VIEW





## Extended high position height adjustable arm

MD



### Monitor adaption

prepared to accept Mindray mounting adapter

### Height adjustment

slow-flowing spring, parallel linkage for a constant viewing angle

### Colours to choose **CD**

decorative parts RAL 5013 cobalt blue / RAL 7024 graphite grey  
aluminum parts RAL 9016 traffic white / RAL 9002 grey white

### Max. load capacity support arm

22 kg / 48.5 lbs

### Max. load monitor adaption

22 kg / 48.5 lbs

### Product weight

5.3 kg / 11.7 lbs

### Balancing range **X**

600 N (2-5 kg / 4.4-11 lbs); 950 N (4-9 kg / 8.8-19.8 lbs); 1100 N (4.5-12.5 kg / 9.9-27.6 lbs); 1300 N (7.5-13 kg / 16.5-28.7 lbs); 1600 N (12.5-19 kg / 27.6-41.9 lbs); 1750 N (13-16 kg / 28.7-35.3 lbs); 2200 N (16-22 kg / 35.3-48.5 lbs)

### Part number

A-83130MD-**Y****CD**\_X

### Fixings **Y**

details page 25



4S

Adapter for  
vertical wall channel



3

Vertical rail clamp



1V

Universal pole clamp



1

1B

1F

1C

Fixed pole clamp



13

Adapter for Mindray  
medical supply units



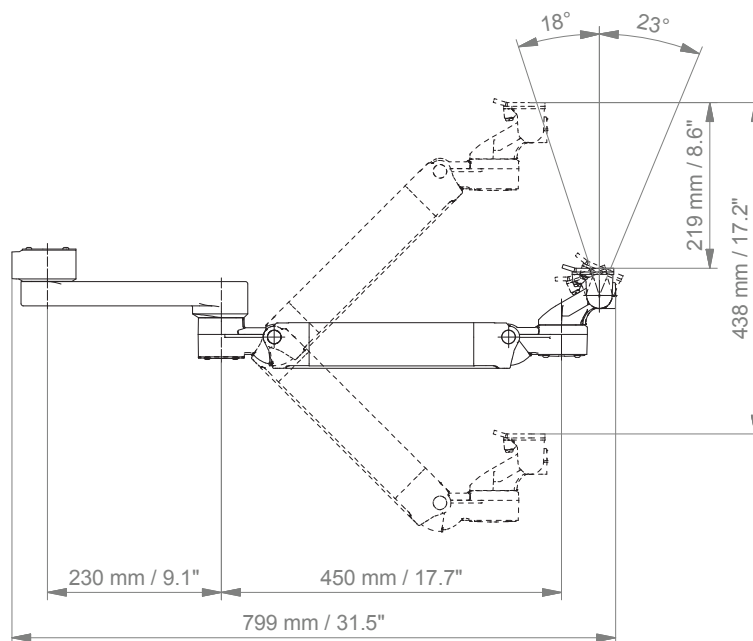
17

Adapter for Amico  
pendants & headwalls

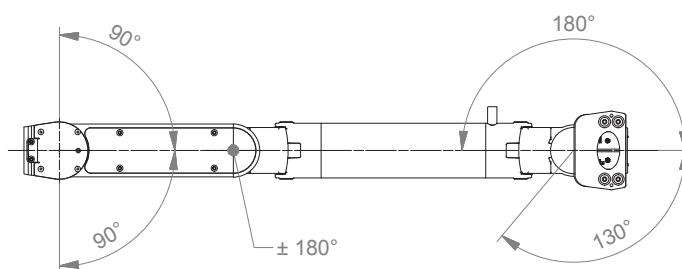
# Extended high position height adjustable arm

## Technical data

### SIDE VIEW



### TOP VIEW



## Counter top

**MD**


### Monitor adaption

prepared to accept Mindray mounting adapter

### Colours to choose **CD**

decorative parts RAL 5013 cobalt blue / RAL 7024 graphite grey  
aluminum parts RAL 9016 traffic white / RAL 9002 grey white

### Max. load monitor adaptation

18 kg / 39.7 lbs

### Part number

Counter top with base plate (see illustration)

T-HMD-60.**CD**\_50 height 50 mm / 2"

T-HMD-60.**CD**\_120 height 120 mm / 4.7"

Counter top without base plate

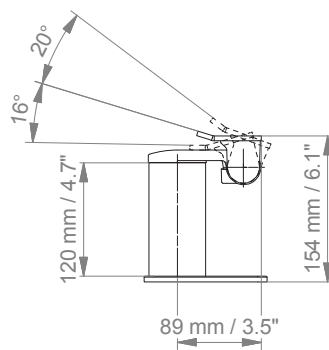
T-HMD-69.**CD**\_50 height 50 mm / 2"

T-HMD-69.**CD**\_120 height 120 mm / 4.7"

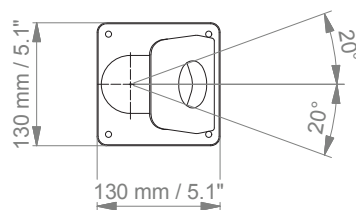
# Counter top

Technical data - with base plate

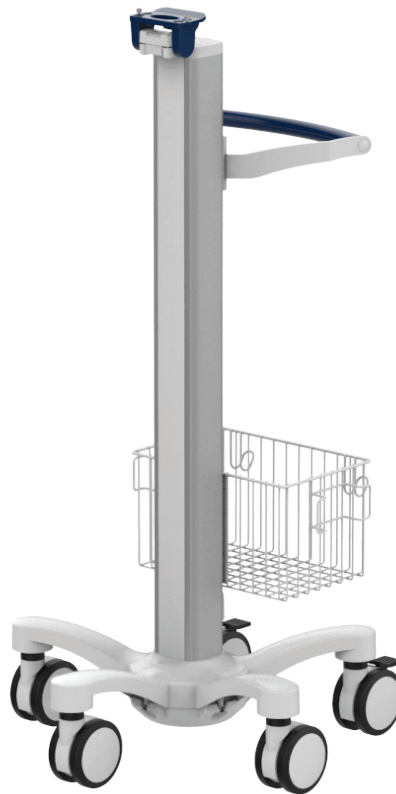
## SIDE VIEW



## TOP VIEW



## Cart light duty

**MD**


### Monitor adaption

prepared to accept Mindray mounting adapter

### Accessories

5-star base aluminum base with counter weight  
double wheel castors, ø 100 mm/ 3.9", 2 lockable  
column to accept components and accessories on opposite sides

### Colours to choose **CD**

decorative parts RAL 5013 cobalt blue / RAL 7024 graphite grey  
base RAL 9016 traffic white  
handle RAL 9016 traffic white / RAL 5013 cobalt blue / RAL 7024 graphite grey

### Max. load capacity

14 kg / 30.9 lbs

### Optional accessories

basket big 300 x 200 x 180 mm / 11.8 x 7.9 x 7.1"  
basket small 200 x 150 x 100 mm / 7.9 x 5.9 x 3.9"  
handle

### Part number

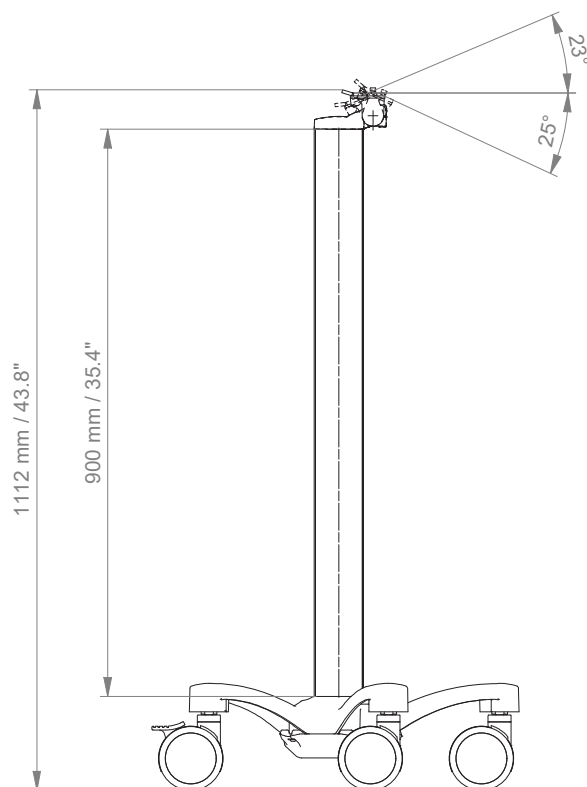
cart	R-002MD. <b>CD</b>
basket big	Z-51-4Z.1
basket small	Z-52-4Z.1
handle	Z-HD-4. <b>C1</b>



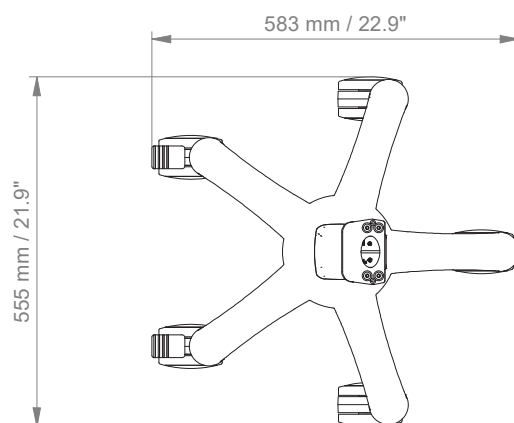
# Cart light duty

## Technical data

### SIDE VIEW











### TOP VIEW

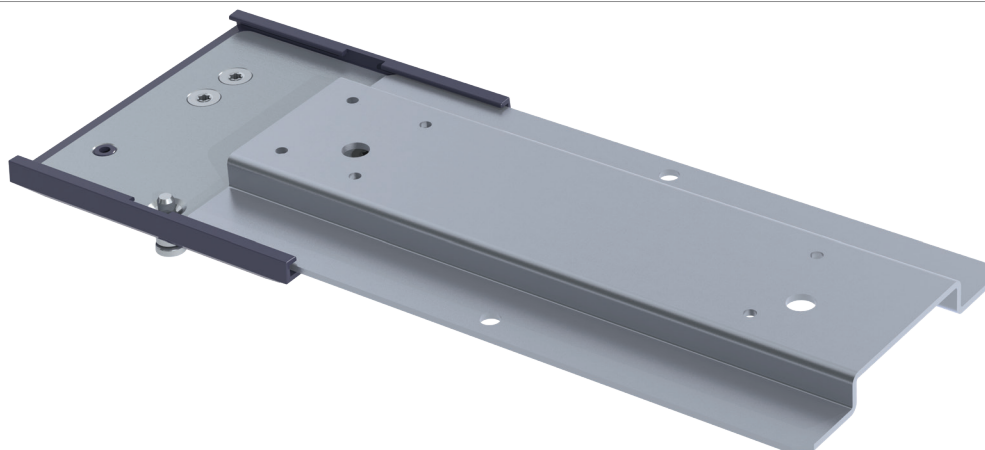



## Fixings Y



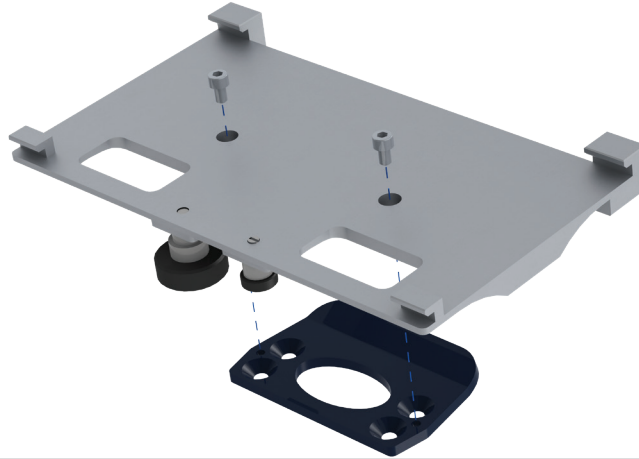
Illustration	Description	Notes	Weight	Part no.
	Adapter for vertical wall channel	To mount to CIM wall channel (compatible with GCX channel) Please order separately: CIM wall channel, see catalogue accessoires	0.6 kg / 1.3 lbs	4S
	Horizontal rail clamp	To mount to horizontal European rails 10 x 25, 8 x 35, 10 x 30, 10 x 50 mm	1.1 kg / 2.4 lbs	2F
	Vertical rail clamp	To mount to vertical European rail 10 x 25 mm	0.5 kg / 1.1 lbs	3
	Universal pole clamp	V-block to mount to pole $\varnothing$ 23 - 40 mm / 0.9 - 1.6"	0.6 kg / 1.3 lbs	1V
	Fixed pole clamp	To mount to pole $\varnothing$ 25 mm / 1.0" To mount to pole $\varnothing$ 30 mm / 1.2" To mount to pole $\varnothing$ 35 mm / 1.4" To mount to pole $\varnothing$ 38 mm / 1.5"	0.3 kg / 0.7 lbs 0.4 kg / 0.9 lbs 0.4 kg / 0.9 lbs 0.4 kg / 0.9 lbs	1 1B 1F 1C
	Adapter medical supply units	For Mindray medical supply units	0.8 kg / 1.8 lbs	13
	Adapter pendants & headwalls	For Amico pendants & headwalls	0.6 kg / 1.3 lbs	17
	Adapter pendants & headwalls	For Löwenstein Medical / ITD / mounting channels	0.4 kg / 0.9 lbs	9

## Monitor-specific mounting adapter



Type of monitor	Description	Part No.
<b>CIM med Mounting Adapter</b> 		
PM 8000	Mounting adapter for 5" plunge plate	MD-AP-PM8
BeneView T8 / BeneView T9	Mounting adapter for 5" plunge plate	MD-AP-T8
BeneView T5 / PM 9000	Mounting adapter for 5" plunge plate	MD-AP-T5
BeneVision N15 / N17	Mounting adapter for 5" plunge plate	MD-AP-N
Adapter plates are only supplied with CIM support arms, counters tops or carts. Exceptions can be made on request, however, please note that price and part number will change when sold separately (K-MD-AP-...).		
<b>Mindray Mounting Adapter</b> Please order those with Mindray.		
iPM / iMEC / BeneView T1 / BeneView TDS / BeneVision N12	Quick release plate for 5" plunge plate	045-000954-00
VS Series	Quick release plate for 5" plunge plate	045-001055-00
BeneView T5	Mounting adapter for 5" plunge plate	115-003441-00
BeneView T8 / BeneView T9	Mounting adapter for 5" plunge plate	045-000957-00

## Monitor-specific mounting adapter



Type of monitor	Description	Part No.
<b>Mindray Tray Kit</b> <b>Please order those with Mindray.</b>		
BeneView T5	Tray Kit	0010-30-43032
BeneView T8 / BeneView T9	Tray Kit	0010-30-42864
iPM / iMEC / BeneView T1 / BeneView TDS / BeneVision N12	Tray Kit	115-011-842-00



**CIM med GmbH**

Euro-Industriepark  
Margot-Kalinke-Str. 9  
80939 Munich / Germany

T +49 89. 978 94 08-0

---

**CIM med Inc.**

2024 E Independence Commerce Dr  
Matthews, NC 28105 / USA

T +1 855 895 4722

---

[info@cim-med.com](mailto:info@cim-med.com)  
[www.cim-med.com](http://www.cim-med.com)

