



MOUNTING REFERENCE GUIDE

Dräger Infinity Acute Care System Monitoring

CIM Cable Integrated Mounting System



Content

General notes	3
Product weight	4
Dräger Infinity Acute Care System - Ergonomic wall mount	5
Height adjustable wall mount with W-bracket	6
Dräger Infinity Acute Care System - Fold-up with wall mount	9
Height adjustable wall mount with Z-bracket	10
Dräger Infinity Acute Care System - Mounting kits for C500/ C700	13
Height adjustable arm kit	14
Extended height adjustable arm kit	17
Cart light duty kit I	20
Cart light duty kit II	22
Cart light duty with keyboard	24

General notes

Monitor Adaptations

The monitor adaption VESA 75/100 quick release (Z-QR-G.D) offers tool-free disassembly of the monitor.

Components' grounding

All arms with integrated cable management are equipped with **component grounding**. No grounding is required for arms with external or semi-integrated cable management with cables not being led through joints.

Load capacity

All **height adjustable arms** have a load capacity of 22 kg / 48.5 lbs. Rear mounted monitor adaptations and horizontally mounted 5" plunge plates accept a maximum monitor weight of 18 kg / 39.7 lbs. An additional 4 kg / 8.8 lbs may be mounted on a down post underneath the front swivel part. Depending on material and tensile factor all weight indications have a 4-fold and/ or 6-fold safety factor according to IEC 60601-1 standards.

Custom-designed solutions and MRI applications

Please contact us for **custom-designed** solutions.

Product marking

All CIM products are CE marked. As **medical product risk class 1** they are conform with the regulations (EU) 2017/745 (MDR) and IEC 60601-1. Other standards of the IEC 60601 series are not applicable to our products, regardless of their version.

Warranty

All CIM arms have a 5-year warranty to be free of defects in material and functionality from the date of delivery.

Non-height adjustable arm

Pivot and extended pivot arms offer **full cable integration** and easy cleaning for **infection control** in all critical care areas in the clinical environment. Our **5-years warranty** guarantees reliable, trouble-free and maintenance-free operation. The swivel function at the fixing point as well as the **tilt/ swivel function** of the monitor adaptation offers optimum positioning of your device. The extended pivot arm is a two-part arm with central pivot point between the two arm sections. All bottom-mounted monitors have the safety feature of a **20° tilt stop**.

Height adjustable arm

The height adjustable arm offers **full cable integration**, one-wipe clean surfaces and our **5-year warranty** on the entirety of the product. Vertically and horizontally adjustable, the arm offers optimal positioning of your device. A constant viewing angle when vertically adjusted is guaranteed by a parallel linkage.

Weight-optimized springs counter-balance

the monitor without making any adjustments. All bottom-mounted monitors have the safety feature of a **20° tilt stop**. Individual rotational stops may be integrated in any joint.

To provide the perfect combination of arm and monitor, the CIM articulated height adjustable arm has a simple quarter-turn lock to hold the arm safely in position when removing the monitor. Furthermore the arm is equipped with the unique safety feature of a slow-release gas spring. Should anybody try to remove the monitor before locking the arm in position, the arm will only rise at a slow and even tempo.

SAFETY

Product weight

Part No.	Description	Weight
A-431F-4S_130_30	Height adjustable arm with W-bracket and keyboard tray 300 x 210 mm	30: 6.0 kg / 13.2 lbs
A-431F-4S_130_40	Height adjustable arm with W-bracket and keyboard tray 400 x 150 mm	40: 5.9 kg / 13.0 lbs
A-431F-4S_130_50	Height adjustable arm with W-bracket and keyboard tray 500 x 200 mm	50: 6.2 kg / 13.7 lbs
A-431F-4S_130_58	Height adjustable arm with W-bracket and keyboard tray 580 x 200 mm	58: 6.4 kg / 14.1 lbs
A-431F-4S_130_65	Height adjustable arm with W-bracket and keyboard tray 650 x 200 mm	65: 6.5 kg / 14.3 lbs
A-431F-4S_130_RC	Height adjustable arm with W-bracket and keyboard tray 480 x 220 mm	RC: 7.5 kg / 16.5 lbs
A-431M-4S_130_30S	Height adjustable arm with Z-bracket and mag. keyboard tray 300 x 210 mm	30S: 7.3 kg / 16.1 lbs
A-431M-4S_130_40S	Height adjustable arm with Z-bracket and mag. keyboard tray 400 x 150 mm	40S: 7.4 kg / 16.3 lbs
A-431M-4S_130_50S	Height adjustable arm with Z-bracket and mag. keyboard tray 500 x 200 mm	50S: 7.8 kg / 17.2 lbs
A-431M-4S_130_58S	Height adjustable arm with Z-bracket and mag. keyboard tray 580 x 200 mm	58S: 8.0 kg / 17.6 lbs
A-431M-4S_130_65S	Height adjustable arm with Z-bracket and mag. keyboard tray 650 x 200 mm	65S: 8.2 kg / 18.1 lbs
A-431M-4S_130_RC	Height adjustable arm with Z-bracket and mag. keyboard tray 480 x 220 mm	RC: 8.4 kg / 18.5 lbs
A-431Q-4S	Height adjustable arm with quick release base plate and adapter for vertical wall channel	4.2 kg / 9.3 lbs
A-73130Q-4S	Extended height adjustable arm with quick release base plate and adapter for vertical wall channel	5.2 kg / 11.5 lbs
S-910C-1	Flush mount for M500/M540 with quick release adapter plate VESA 75 and fixed pole clamp	1.2 kg / 2.6 lbs
A-224C-4S	Support arm pivot with VESA 75/75 and adapter for vertical wall channel	2.4 kg / 5.3 lbs
A-230C-4S	Support arm pivot with VESA 75/75 and adapter for vertical wall channel	2.5 kg / 5.5 lbs
Z-KH6-71.1_300	Down post with cable hook, lenght 300 mm / 11.8"	0.4 kg / 0.9 lbs
Z-QR-G	Quick release adapter plate VESA 75/100	0.2 kg / 0.4 lbs
DR-PS250-4Z	5" plunge plate with adapter plate for Dräger PS250/2500	0.6 kg / 1.3 lbs
Z-KH2-70	Dual cable hook	0.3 kg / 0.7 lbs

Dräger Infinity Acute Care System - Ergonomic wall mount



Height adjustable wall mount with W-bracket



Configuration shown consists of:

Part No.

Infinity C700

CIM height adjustable arm with W-bracket for monitor (VESA 75/100) and
 keyboard tray 300 x 210 mm/ 11.8" x 8.3" (W x D)
 keyboard tray 400 x 150 mm/ 15.7" x 5.9" (W x D)
 keyboard tray 500 x 200 mm/ 19.7" x 7.9" (W x D)
 keyboard tray 580 x 200 mm/ 22.8" x 7.9" (W x D)
 keyboard tray 650 x 200 mm/ 25.6" x 7.9" (W x D)
 keyboard tray 480 x 220 mm/ 18.9" x 8.7" (W x D)
 with retractable mouse tray left/ right side 226 mm/ 8.9"

A-431F-4S.bl1_130_30
 A-431F-4S.bl1_130_40
 A-431F-4S.bl1_130_50
 A-431F-4S.bl1_130_58
 A-431F-4S.bl1_130_65
 A-431F-4S.bl1_130_RC

M500/ M540

CIM pivot arm with VESA 75 plunge adapter, arm length 240 mm/ 9.5"
 CIM pivot arm with VESA 75 plunge adapter, arm length 300 mm/ 11.8"

A-224C-4S.bl1
 A-230C-4S.bl1

Power supply

Bracket for PS250/2500

DR-PS250-4Z.bl1

Optional to order

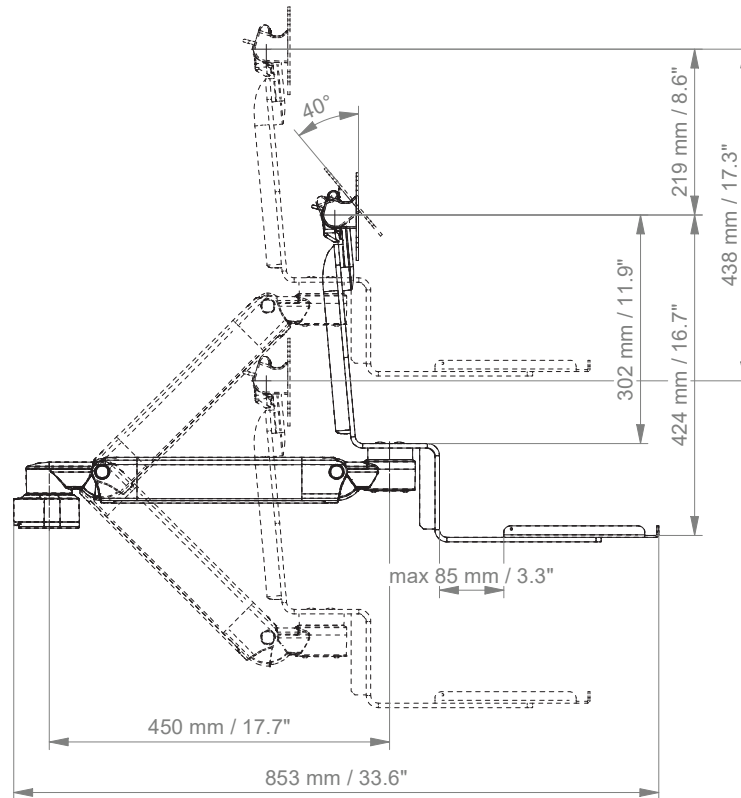
Dual cable hook to mount underneath pivot arm
 CIM wall channel (including channel cover and end caps)
 L = 480 mm/ 18.9"
 L = 720 mm/ 28.3"

Z-KH2-70.1
 Z-WK.w_480
 Z-WK.w_720

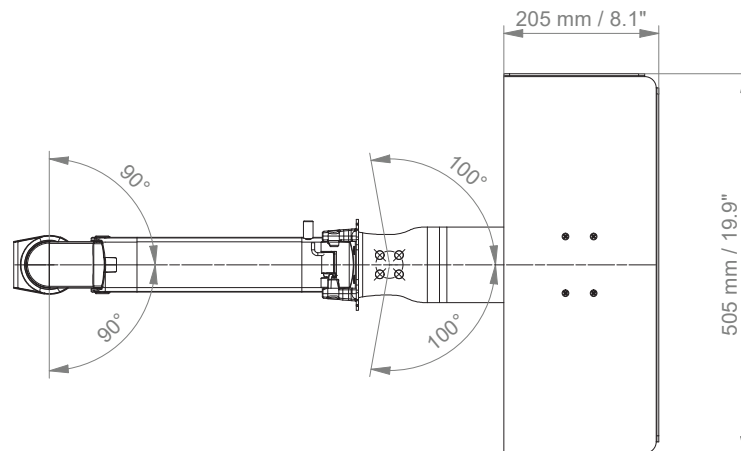
Height adjustable wall mount with W-bracket

Technical data height adjustable arm with W-bracket and keyboard tray 22.8" x 7.9"

SIDE VIEW



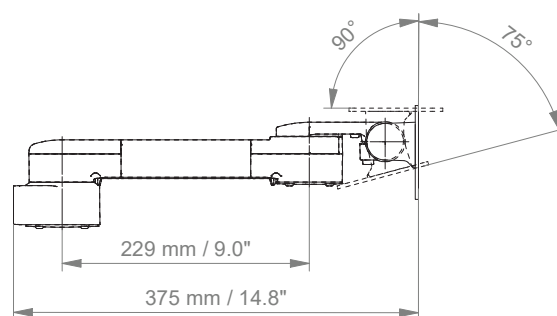
TOP VIEW



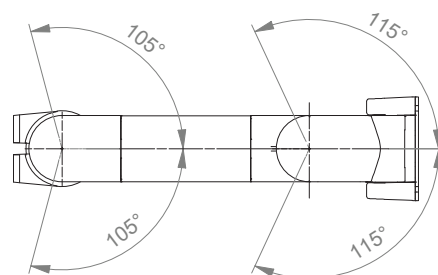
Height adjustable wall mount with W-bracket

Technical data pivot arm with VESA 75 mounting adapter

SIDE VIEW



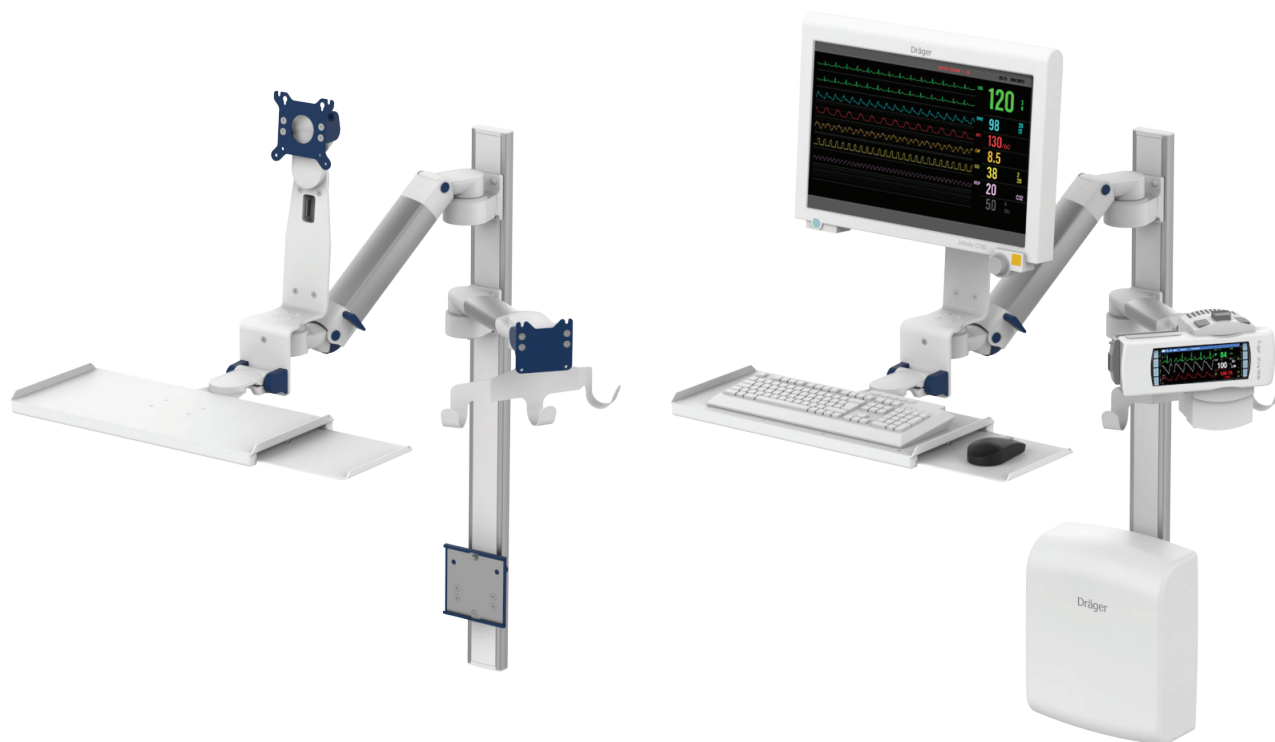
TOP VIEW



Dräger Infinity Acute Care System - Fold-up with wall mount



Height adjustable wall mount with Z-bracket



Configuration shown consists of:

Part No.

Infinity C700

CIM height adjustable arm with Z-bracket for monitor (VESA 75/100) and
magnetic keyboard tray 300 x 210 mm/ 11.8" x 8.3" (W x D)
magnetic keyboard tray 400 x 150 mm/ 15.7" x 5.9" (W x D)
magnetic keyboard tray 500 x 200 mm/ 19.7" x 7.9" (W x D)
magnetic keyboard tray 580 x 200 mm/ 22.8" x 7.9" (W x D)
magnetic keyboard tray 650 x 200 mm/ 25.6" x 7.9" (W x D)
keyboard tray 480 x 220 mm/ 18.9" x 8.7" (W x D)
with retractable mouse tray left/ right side 226 mm/ 8.9"

A-431M-4S.bl1_130_30S
A-431M-4S.bl1_130_40S
A-431M-4S.bl1_130_50S
A-431M-4S.bl1_130_58S
A-431M-4S.bl1_130_65S
A-431M-4S.bl1_130_RC

M500/ M540

CIM pivot arm with VESA 75 plunge adapter, arm length 240 mm/ 9.5"
CIM pivot arm with VESA 75 plunge adapter, arm length 300 mm/ 11.8"

A-224C-4S.bl1
A-230C-4S.bl1

Power supply

Bracket for PS250/2500

DR-PS250-4Z.bl1

Optional to order

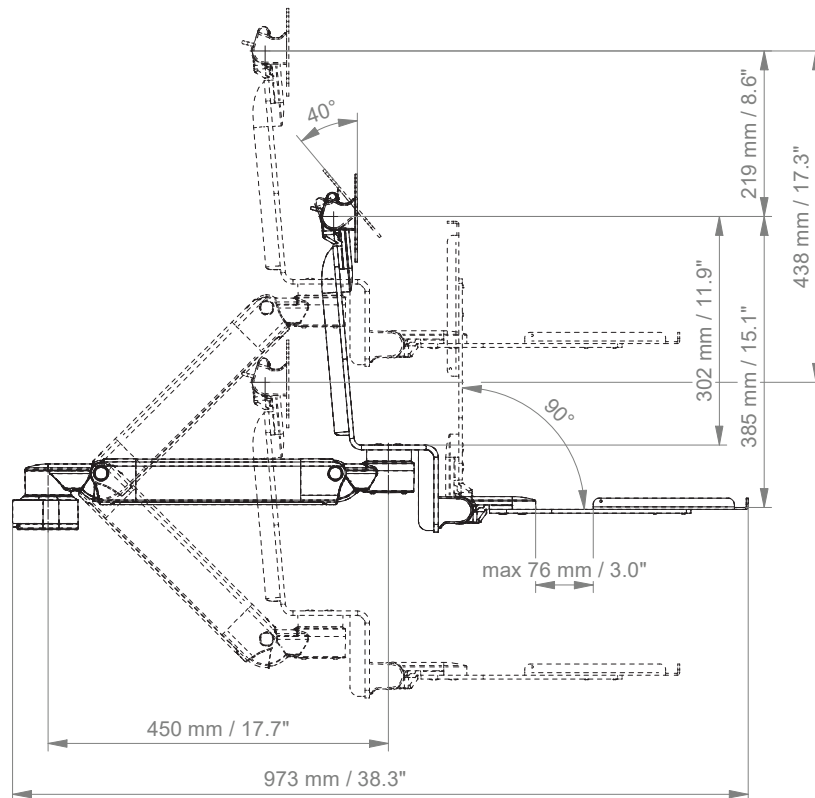
CIM dual cable hook to mount underneath pivot arm
CIM wall channel (including channel cover and end caps)
L = 480 mm/ 18.9"
L = 720 mm/ 28.3"

Z-KH2-70.1
Z-WK.w_480
Z-WK.w_720

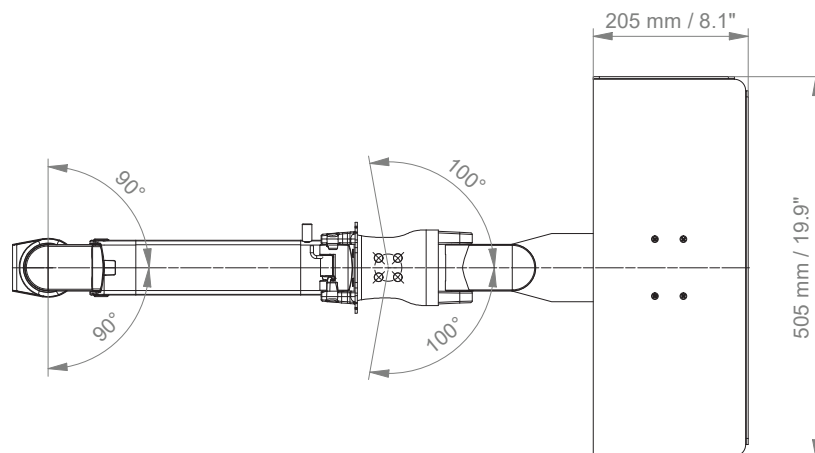
Height adjustable wall mount with Z-bracket

Technical data height adjustable arm with Z-bracket and keyboard tray 22.8" x 7.9"

SIDE VIEW



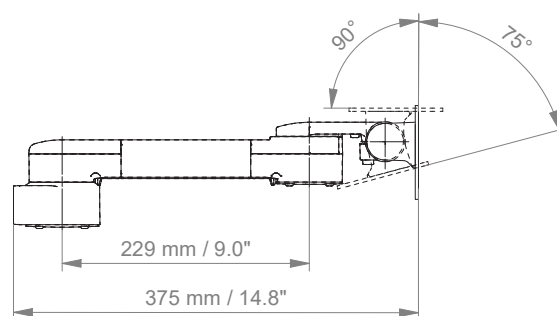
TOP VIEW



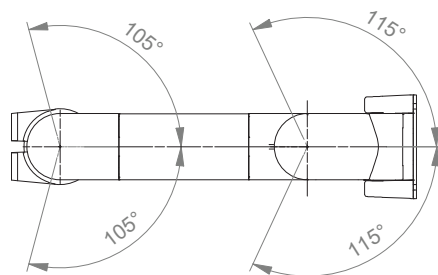
Height adjustable wall mount with Z-bracket

Technical data pivot arm with VESA 75 mounting adapter

SIDE VIEW



TOP VIEW



Dräger Infinity Acute Care System - Mounting kits for C500/ C700



Height adjustable arm kit for C500/ C700



Monitor adaption

Colours

Maximum load capacity support arm

Maximum load monitor adaptation

Product weight

Balancing range

quick release base plate

decorative parts

aluminum parts

20.5 kg / 45.2 lbs

18 kg / 39.7 lbs

see page 3

C500

C700

RAL 5013 cobalt blue

RAL 9016 traffic white

1300 N (6 - 11.5 kg / 13.2 - 25.4 lbs)

1750 N (11.5 - 14.5 kg / 25.4 - 32.0 lbs)

Kit number

P-DR-0006-4S.bl1_130

P-DR-0007-4S.bl1_175

C500

C700

Consisting of the following parts:

A-431Q-4S.bl1_130

A-431Q-4S.bl1_175

Z-QR-G.1

O-QFIT.bl

Z-KH6-71.1_300

S-910C-1.bl1

DR-PS250-4Z.bl1

C500: height adjustable arm

C700: height adjustable arm

quick release adapter plate VESA 75/100

Q-fit cover profile

down post with cable hook, rotatable, L 300 mm / 11.8"

flush mount for M500/M540 with VESA 75

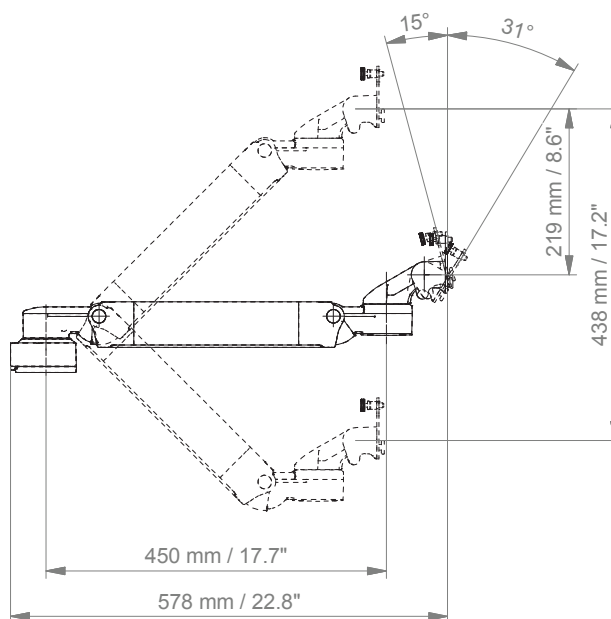
5" plunge plate with adapter plate for Dräger PS250/2500

Please order the wall channel separately.

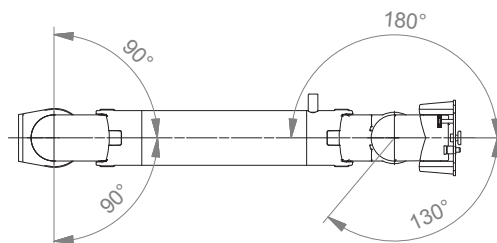
Height adjustable arm kit for C500/ C700

Technical data height adjustable arm

SIDE VIEW



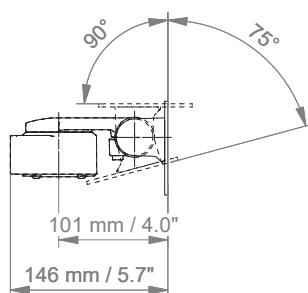
TOP VIEW



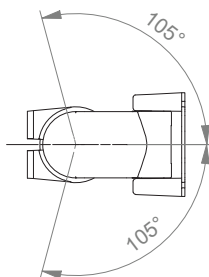
Height adjustable arm kit for C500/ C700

Technical data flush mount

SIDE VIEW



TOP VIEW



Extended height adjustable arm kit for C500/ C700



Monitor adaption

Colours

Maximum load capacity support arm

Maximum load monitor adaptation

Product weight

Balancing range

quick release base plate

decorative parts

aluminum parts

20.5 kg / 45.2 lbs

18 kg / 39.7 lbs

see page 3

C500

C700

RAL 5013 cobalt blue

RAL 9016 traffic white

1300 N (6 - 11.5 kg / 13.2 - 25.4 lbs)

1750 N (11.5 - 14.5 kg / 25.4 - 32.0 lbs)

Kit number

P-DR-0008-4S.bl1_130

P-DR-0009-4S.bl1_175

C500

C700

Consisting of the following parts:

A-73130Q-4S.bl1_130

A-73130Q-4S.bl1_175

Z-QR-G.1

O-QFIT.bl

Z-QFIT.EXT

Z-KH6-71.1_300

S-910C-1.bl1

DR-PS250-4Z.bl1

C500: extended height adjustable arm

C700: extended height adjustable arm

quick release adapter plate VESA 75/100

Q-fit cover profile

Q-fit cover profile for extension

down post with cable hook, rotatable, L 300 mm / 11.8"

flush mount for M500/M540 with VESA 75

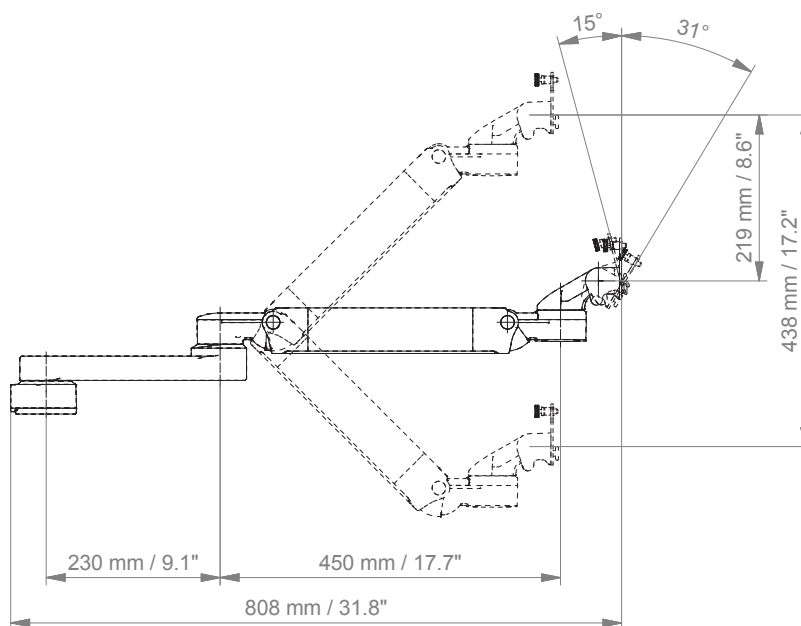
5" plunge plate with adapter plate for Dräger PS250/2500

Please order the wall channel separately.

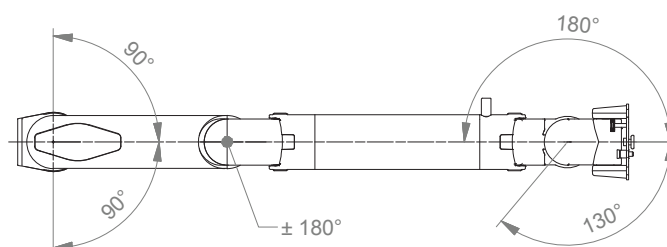
Extended height adjustable arm kit for C500/ C700

Technical data extended height adjustable arm

SIDE VIEW



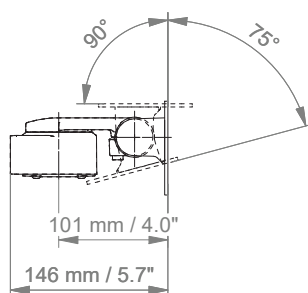
TOP VIEW



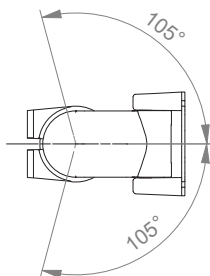
Extended height adjustable arm kit for C500/ C700

Technical data flush mount

SIDE VIEW



TOP VIEW



Cart light duty kit I



Monitor adaption CIM cart light duty

CL-bracket, VESA 75/100 with tilt function
5-star base aluminum base with counter weight
(2) lockable and (3) non-lockable double wheel castors, ø 100 mm / 3.9"
column to accept components and accessories on opposite sides

Colours

decorative parts	RAL 5013 cobalt blue
base	RAL 9016 traffic white
handle	RAL 5013 cobalt blue

Maximum load capacity

11.2 kg / 24.7 lbs

Kit number

DR-002IACS-01.bl1

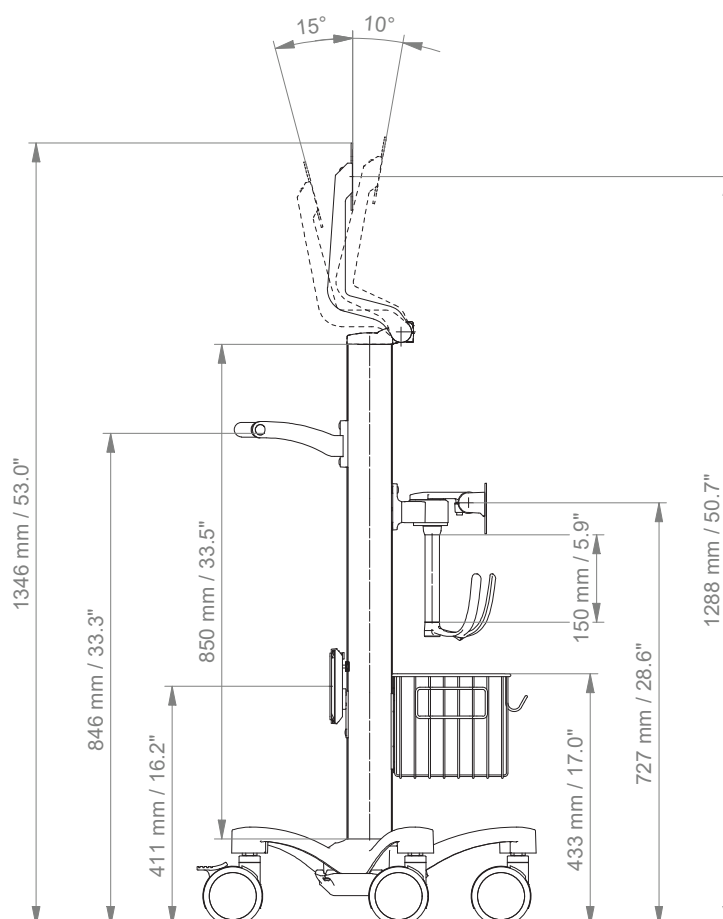
Consisting of the following parts:

R-002K.bl1	cart light duty
Z-HD-4.bl1	handle for carts
S-910C-4S.bl1	flush mount for M500/M540 with VESA 75
Z-KH6-71.1_150	down post with cable hook
Z-51-4Z.1	basket 300 x 200 x 180 mm / 11.8 x 7.9 x 7.1"
DR-PS250-4Z.bl1	5" plunge plate with adapter plate for Dräger PS250/2500

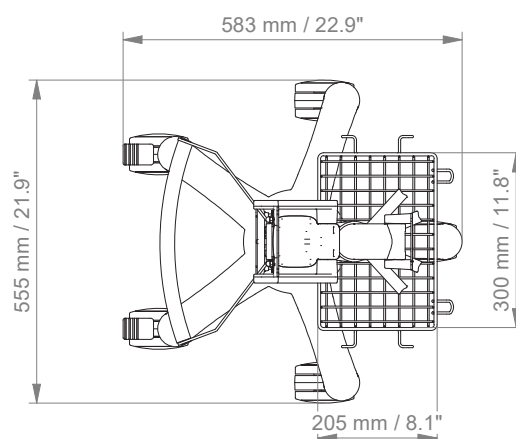
Cart light duty kit I

Technical data

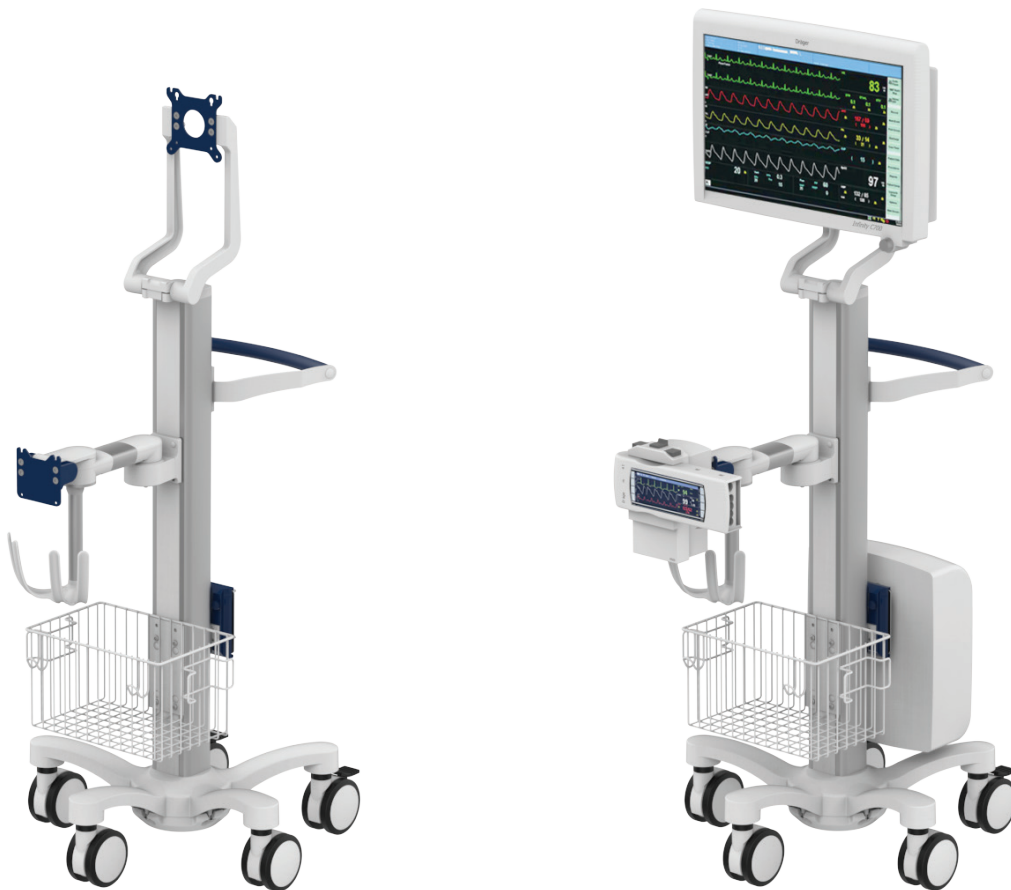
SIDE VIEW



TOP VIEW



Cart light duty kit II



Monitor adaption CIM cart light duty

Colours

Maximum load capacity

Kit number

CL-bracket, VESA 75/100 with tilt function
 5-star base aluminum base with counter weight
 (2) lockable and (3) non-lockable double wheel castors, \varnothing 100 mm / 3.9"
 column to accept components and accessories on opposite sides
 decorative parts RAL 5013 cobalt blue
 base RAL 9016 traffic white
 handle RAL 5013 cobalt blue
 11.2 kg / 24.7 lbs

DR-002IACS-02.bl1

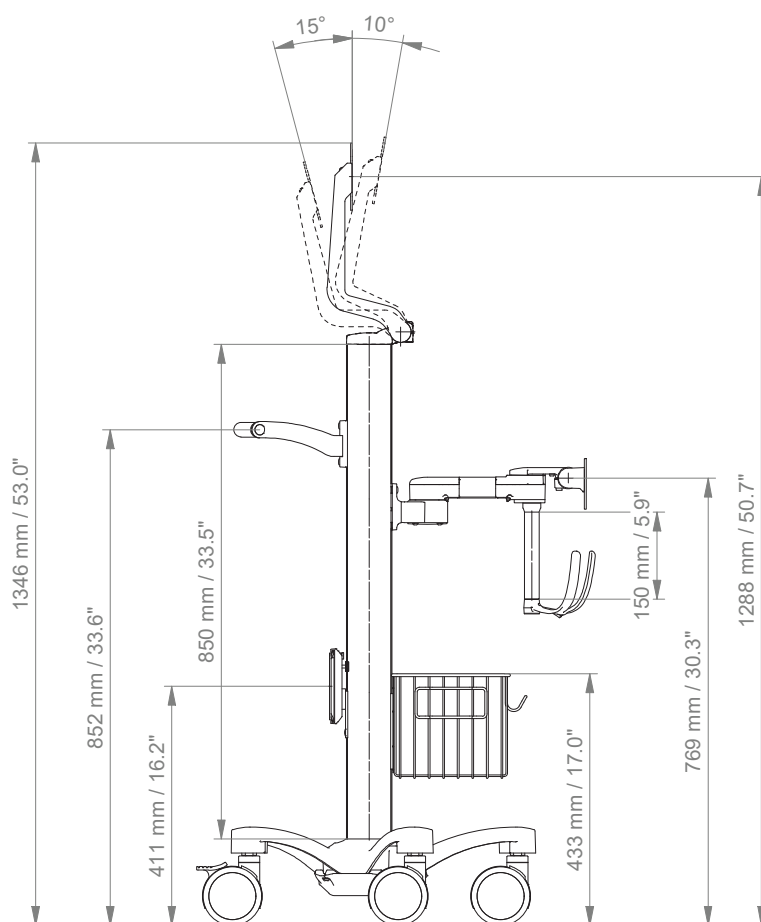
Consisting of the following parts:

R-002K.bl1	cart light duty
Z-HD-4.bl1	handle for carts
A-224C-4S.bl1	support arm pivot for M500/M540 with VESA 75
Z-KH6-70.1_150	down post with cable hook
Z-51-4Z.1	basket 300 x 200 x 180 mm / 11.8 x 7.9 x 7.1"
DR-PS250-4Z.bl1	5" plunge plate with adapter plate for Dräger PS250/2500

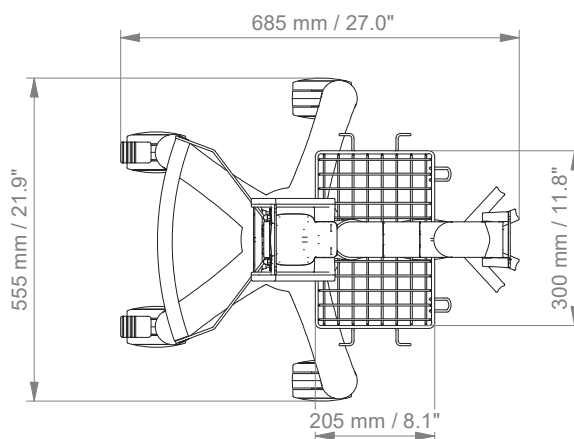
Cart light duty kit II

Technical data

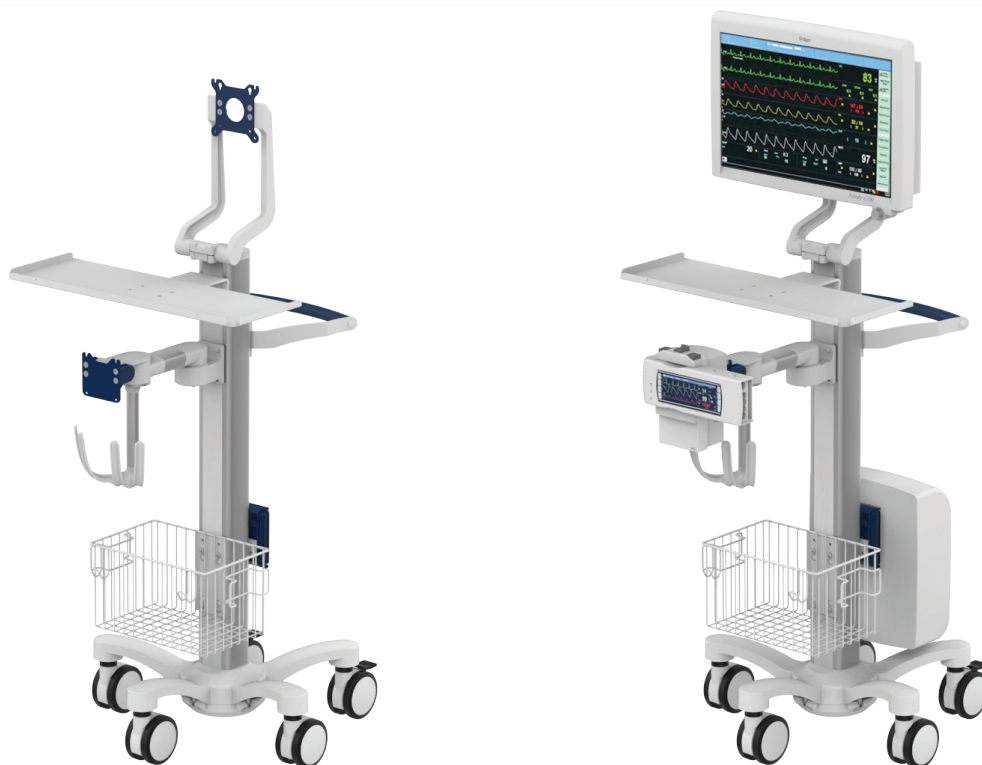
SIDE VIEW



TOP VIEW



Cart light duty kit with keyboard



Monitor adaption CIM cart light duty

CL-bracket, VESA 75/100 with tilt function
5-star base aluminum base with counter weight
(2) lockable and (3) non-lockable double wheel castors, \varnothing 100 mm / 3.9"
column to accept components and accessories on opposite sides

Colours

decorative parts RAL 5013 cobalt blue
base RAL 9016 traffic white
handle RAL 5013 cobalt blue

Maximum load capacity

11.2 kg / 24.7 lbs

Kit number

DR-002IACS-02.bl1_65 keyboard tray 650 x 200 mm / 25.6" x 7.9" (W x D)
DR-002IACS-02.bl1_58 keyboard tray 580 x 200 mm / 22.8" x 7.9" (W x D)
DR-002IACS-02.bl1_50 keyboard tray 500 x 200 mm / 19.7" x 7.9" (W x D)
DR-002IACS-02.bl1_40 keyboard tray 400 x 150 mm / 15.7" x 5.9" (W x D)
DR-002IACS-02.bl1_30 keyboard tray 300 x 210 mm / 11.8" x 8.3" (W x D)
DR-002IACS-02.bl1_RC keyboard tray with retractable left/ right mouse tray
480 x 220 mm / 18.9" x 8.7" (W x D), mouse tray 226 mm / 8.9"

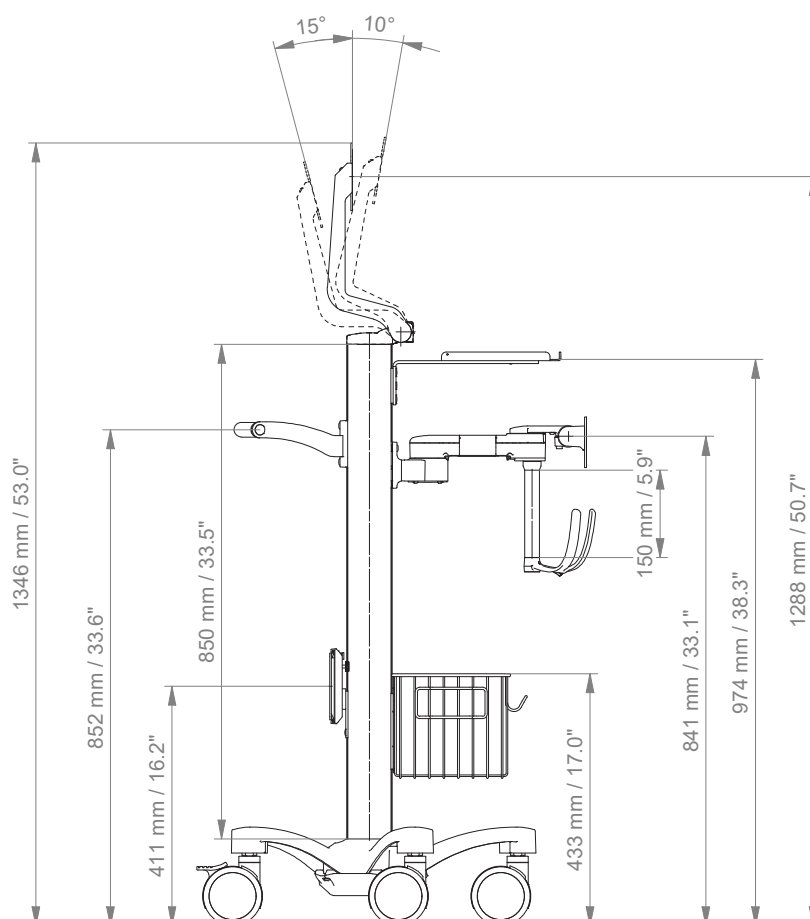
Consisting of the following parts:

R-002K.bl1 cart light duty
Z-HD-4.bl1 handle for carts
S-910C-4S.bl1 flush mount for M500/M540 with VESA 75
Z-KH6-71.1_150 down post with cable hook
Z-51-4Z.1 basket 300 x 200 x 180 mm / 11.8 x 7.9 x 7.1"
DR-PS250-4Z.bl1 5" plunge plate with adapter plate for Dräger PS250/2500

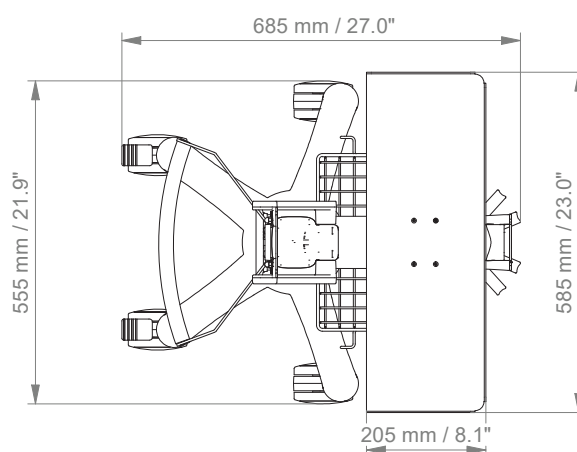
Cart light duty kit with keyboard

Technical data

SIDE VIEW



TOP VIEW





CIM med GmbH

Euro-Industriepark
Margot-Kalinke-Str. 9
80939 Munich / Germany

T +49 89. 978 94 08-0

F +49 89. 978 94 08-29

M info@cim-med.com

www.cim-med.com

