



MOUNTING REFERENCE GUIDE

# Accessories

CIM Cable Integrated Mounting System



# Content

<b>General notes</b>	<b>3</b>
<b>How to create part numbers</b>	<b>4</b>
<b>Drawer</b>	<b>5</b>
<b>Infusion Pump Mount</b>	<b>7</b>
<b>Fixings for Drawers and Infusion Pump Mounts</b>	<b>12</b>
<b>Basket</b>	<b>13</b>
<b>Fixings for Baskets</b>	<b>14</b>
<b>Table Column / Floor Column</b>	<b>15</b>
<b>Cable Management</b>	<b>17</b>
<b>Fixings for Cable Hooks</b>	<b>18</b>
<b>Q-Fit</b>	<b>19</b>
<b>CPU Clamp and Universal Clamp</b>	<b>20</b>
<b>Fixings for CPU Clamps and Universal Clamps</b>	<b>21</b>
<b>Power Supply Holster</b>	<b>22</b>
<b>Fixings for Power Supply Holster</b>	<b>23</b>
<b>Wall Channel and European Rail</b>	<b>24</b>
<b>Keyboard Tray</b>	<b>25</b>
<b>Fixings for Keyboard Trays</b>	<b>26</b>
<b>Handle</b>	<b>27</b>
<b>Down Post</b>	<b>29</b>
<b>Miscellaneous</b>	<b>30</b>

## General notes

---

### Custom-designed solutions and MRI applications

Please contact us for **custom-designed** solutions.

### Product marking

All products which are classified as medical product risk class 1 are CE marked. As **medical product risk class 1** they are conform with the regulations (EU) 2017/745 (MDR) and IEC 60601-1. Other standards of the IEC 60601 series are not applicable to our products, regardless of their version.

**MD** A stand-alone product that is already classified as a medical product class 1 before being integrated into an overall medical device. The product is CE-marked. A declaration of conformity is available.

~~**MD**~~ Accessories or spare parts that have no independent function and are therefore not subject to the MDR. These products are not CE-marked. A declaration of conformity is not required.

### Warranty

All CIM arms have a 5-year warranty to be free of defects in material and functionality from the date of delivery.



# How to create part numbers

Part numbers can be easily created by following the steps below:

Please replace the letters in **green** with the part no. code as per your requirements.

## 1. Specify where you want to mount the arm and select the fixing (Y):

1V	=	pole ø 23 - 40 mm / 0.9 - 1.6"
1	=	pole ø 25 mm / 1.0"
1B	=	pole ø 30 mm / 1.2"
1F	=	pole ø 35 mm / 1.4"
1C	=	pole ø 38 mm / 1.5"
2F	=	horizontal rails 10 x 25, 8 x 35, 10 x 30, 10 x 50 mm
3	=	vertical rail 10 x 25 mm
4S	=	vertical wall channel
4V	=	vertical wall channel (only for drawers)
4Z	=	vertical wall channel (only for accessories, not for support arms)
5	=	horizontal rails 10 x 25, 8 x 35, 10 x 30 mm
6H / 6R	=	horizontal rails 10 x 25, 8 x 35, 10 x 30, 10 x 50 mm
6V	=	vertical rails 10 x 25, 8 x 35, 10 x 30, 10 x 50 mm
70	=	non-height adjustable arms
71	=	height adjustable arms

## 2. Choose the colour requested for decorative parts (C):

gr	=	RAL 7024 (graphite grey)
bl	=	RAL 5013 (cobalt blue)
w	=	RAL 9016 (traffic white) only for drawers, wall channels and handle for carts

## 3. Choose the colour requested for the aluminium die-cast parts (D):

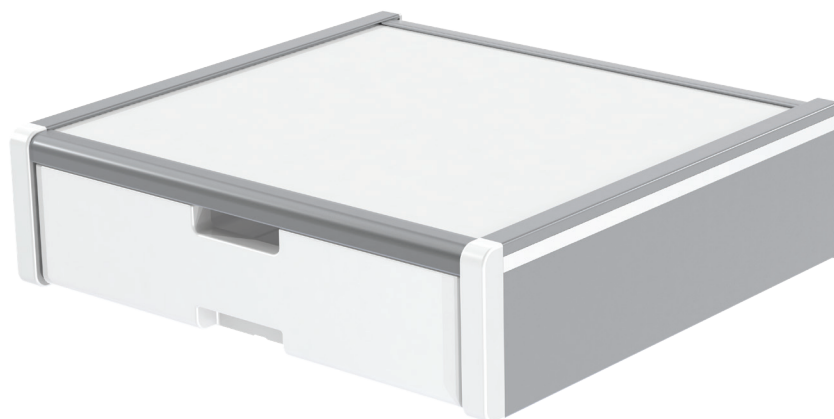
1	=	RAL 9016 (traffic white)
2	=	RAL 9002 (grey white)

## Example

Area of application		Typ of accessory		01 Fixing		02 & 03 Colour		04 Keyboard Tray
Z	-	EF	-	Y	.	CD	-	T
Z	-	EF	-	4S	.	bl1	-	50S



# Drawer



## Dimensions

### Drawer dimensions

440 x 413 x 120 mm / 17.3 x 16.3 x 4.7" (W x D x H)

375 x 335 x 85 mm / 14.8 x 13.2 x 3.3" (W x D x H)

## Material

### Surface

Aluminium, HPL (high pressure laminate), ABS

Anodized, HPL and ABS (= scratch-proof, resistant against impact and disinfectants)

### Colour

RAL 9016 traffic white

### Max. load capacity

25 kg / 55.1 lbs (4-fold safety)

### Drawer max. weight

5 kg / 11 lbs

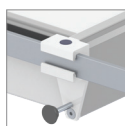
### Part number console with drawer

Z-SLK-Y.w

Z-SLK-NS-Y.w with (2) laterally rails 25 x 10 x 350 mm

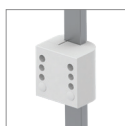
## Fixings

Y | details page 12



2F

Horizontal rail clamp



3

Vertical rail clamp



4V

Adapter for vertical wall channel



1V

Universal pole clamp



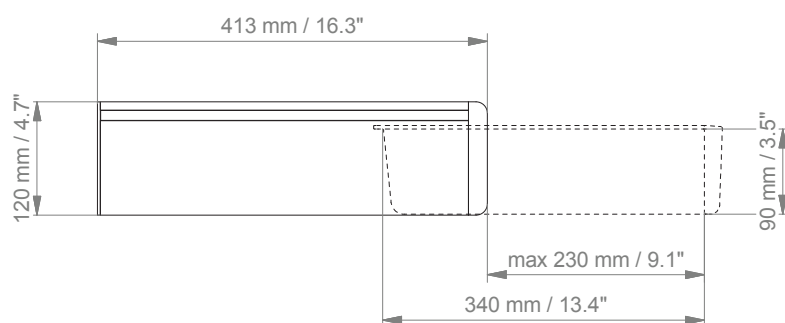
1  
IB  
1F  
1C

Fixed pole clamp

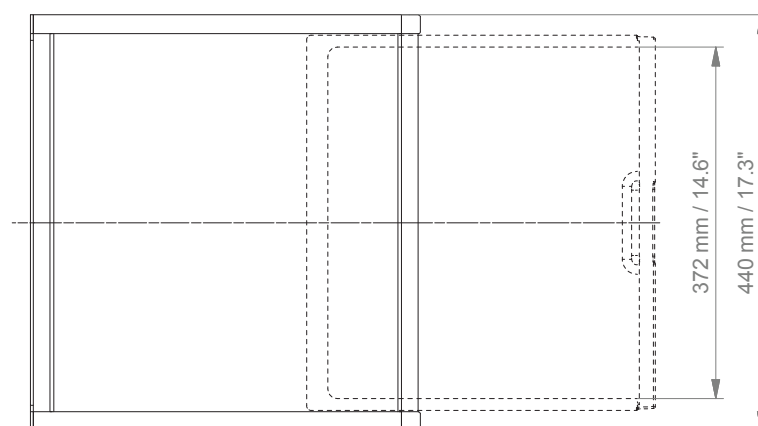
# Drawer

## Technical data

### SIDE VIEW



### TOP VIEW



# Infusion pump mount - pivot arm

MD



## Colours to choose (D)

Aluminium parts: RAL 9016 traffic white (1) / RAL 9002 grey white (2)

## Maximum weight

16.5 kg / 36.4 lbs; 23 kg / 50.1 lbs; 30 kg / 66.1 lbs (6-fold safety)

## Front pole clamp

ø 25 mm / 1"

## Part number

Part number	Armtype	Arm lenght	Maximum weight
Z-224RR-Y.D	240	261 mm / 10.3"	30 kg / 66.1 lbs
Z-230RR-Y.D	300	321 mm / 12.6"	23 kg / 50.7 lbs
Z-240RR-Y.D	400	421 mm / 16.5"	16.5 kg / 36.4 lbs

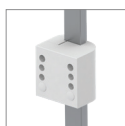
## Fixings

Y | details page 12



2F

Horizontal rail clamp



3

Vertical rail clamp



4S

Adapter for vertical wall channel



1V

Universal pole clamp



1

1B

1F

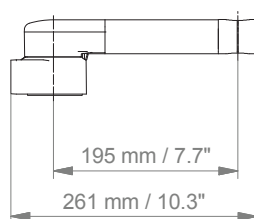
1C

Fixed pole clamp

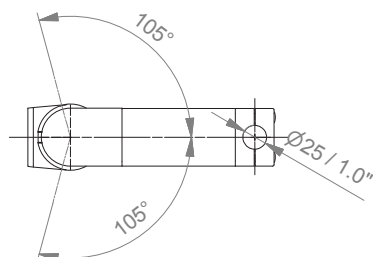
# Infusion pump mount - pivot arm

Technical data - arm type 240

SIDE VIEW



TOP VIEW



# Infusion pump mount - extended pivot arm heavy duty

MD



**Colours to choose (D)**

Aluminium parts: RAL 9016 pure white (1) / RAL 9002 grey white (2)

**Maximum weight**

23 kg / 50.7 lbs (6-fold safety)

**Front pole clamp**

ø 25 mm / 1"

**Part number**

Z-H33030RR-Y.D

The combination of two or more extended pivot arms with an IV pole is not permitted.

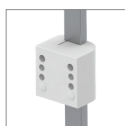
## Fixings

Y | details page 12



2F

Horizontal rail clamp



3

Vertical rail clamp



4S

Adapter for vertical wall channel



1V

Universal pole clamp



1

1B

1F

1C

Fixed pole clamp

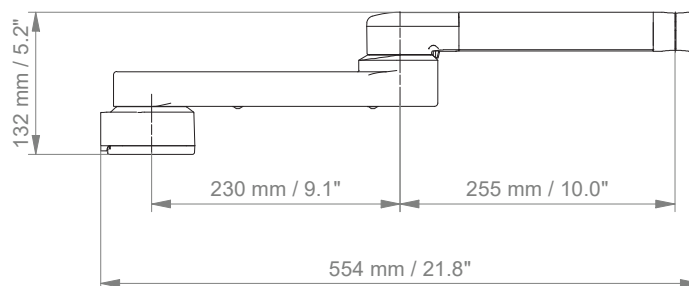


# Infusion pump mount - extended pivot arm heavy duty

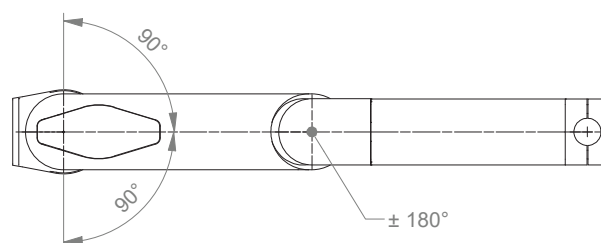
## Technical data

---

### SIDE VIEW



### TOP VIEW



## Infusion pump mount - accessories



### Material

Stainless steel

### Part number

Infusion pole ø 25 mm / 1"

Z-IF\_600          length 600 mm / 23.6"

Z-IF\_1200        length 1200 mm / 47.2"

Infusion pole ø 25 mm / 1" with infusion bag hooks

Z-IF6\_600        length 600 mm / 23.6"

Z-IF6\_1200       length 1200 mm / 47.2"

## Fixings

### for drawers and infusion pump mount

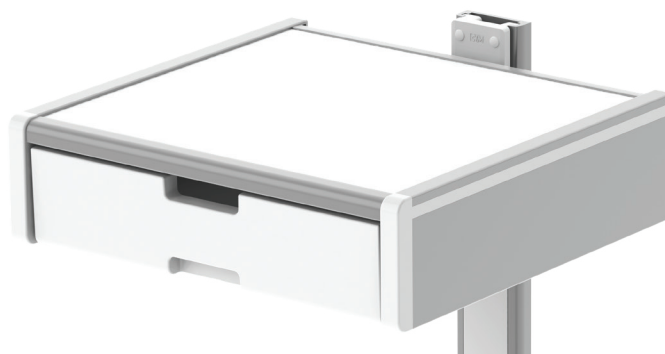







Illustration	Description	Notes	Part no. (Y)
	Horizontal rail clamp	To mount to horizontal European rails 10 x 25, 8 x 35, 10 x 30, 10 x 50 mm	2F
	Vertical rail clamp	To mount to vertical European rail 10 x 25 mm	3
	Adapter for vertical wall channel	To mount to CIM wall channel (compatible with GCX channel) only for drawers	4V
	Adapter for vertical wall channel	To mount to CIM wall channel (compatible with GCX channel)	4S
	Universal pole clamp	V-block to mount to pole $\varnothing$ 23 - 40 mm / 0.9 - 1.6"	1V
	Fixed pole clamp	To mount to pole $\varnothing$ 25 mm / 1.0" To mount to pole $\varnothing$ 30 mm / 1.2" To mount to pole $\varnothing$ 35 mm / 1.4" To mount to pole $\varnothing$ 38 mm / 1.5"	1 1B 1F 1C

# Basket



## Dimensions

Basket big: 300 x 200 x 180 mm/ 11.8 x 7.9 x 7.1" (W x D x H)

Basket small: 200 x 150 x 100 mm/ 7.9 x 5.9 x 3.9" (W x D x H)

## Maximum load

Basket big: 10 kg / 22 lbs

Basket small: 2.5 kg / 5.5 lbs

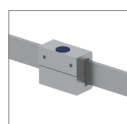
## Part number

Z-51-Y.1 basket big

Z-52-Y.1 basket small

## Fixings

Y | details page 14



6H  
6R

Horizontal  
rail clamp



3

Vertical  
rail clamp



4Z

Adapter for  
vertical wall channel



1V

Universal  
pole clamp



1  
1B  
1F  
1C

Fixed  
pole clamp



70

Bracket with  
swivel function

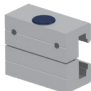








71

Bracket with  
swivel function

## Fixings for baskets



Illustration	Description	Notes	Part no. (Y)
	Horizontal rail clamp	To mount to horizontal rail 10 x 25, 8 x 35, 10 x 30, 10 x 50 mm With locking, to mount to horizontal rail 10 x 25, 8 x 35, 10 x 30, 10 x 50 mm	6H 6R
	Vertical rail clamp	To mount to vertical European rail 10 x 25 mm	3
	Adapter for vertical wall channel	To mount to CIM wall channel (compatible with GCX channel)	4Z
	Universal pole clamp	V-block to mount to pole $\varnothing$ 23 - 40 mm / 0.9 - 1.6"	1V
	Fixed pole clamp	To mount to pole $\varnothing$ 25 mm / 1.0" To mount to pole $\varnothing$ 30 mm / 1.2" To mount to pole $\varnothing$ 35 mm / 1.4" To mount to pole $\varnothing$ 38 mm / 1.5"	1 1B 1F 1C
	Bracket for basket with swivel function	To mount to non-height adjustable arms	70
	Bracket for basket with swivel function	To mount to height adjustable arms	71



## Table column / floor column

MD

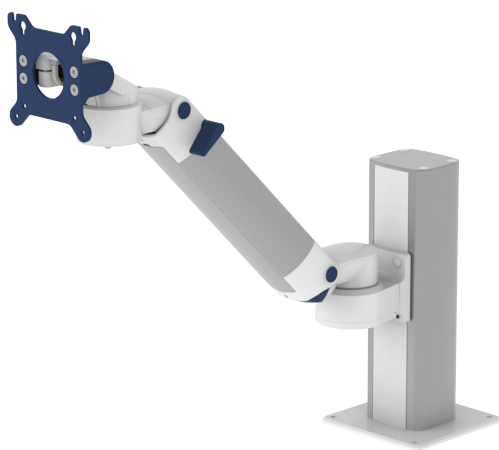


Illustration with height adjustable arm and column height 300 mm / 11.8"



Illustration with height adjustable arm and column height 800 mm / 31.5"

The column profile can be mounted to table or floor. The opposite C-profiles are intended to accept all CIM arms and/or CIM components.

Besides the standard lengths of the column indicated below, individually required lengths are available on request.

### Floor plate till 800 mm / 31.5" height

150 x 150 mm / 5.9 x 5.9", hole pattern 126 x 126 mm / 5 x 5"

### Part number

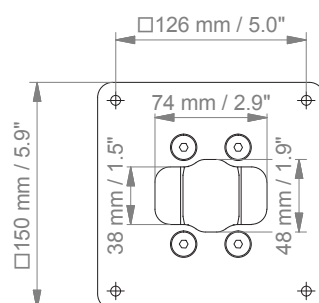
T-CTP-60.w1\_300    Table column with floor plate, L 300 mm/ 11.8"  
T-CTP-60.w1\_800    Table column with floor plate, L 800 mm/ 31.5"

Further length on request.

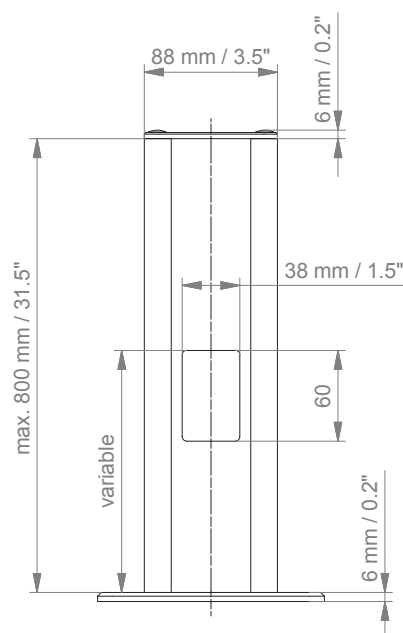
# Table column / floor column

Technical data - Floor plate till 800 mm / 31.5" height

## TOP VIEW



## SIDE VIEW



## Cable Management - Cable hook

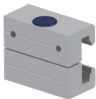






Illustration	Description	Fixing	Part no.
	<b>Dual cable hook</b>  To mount to front joint of arm	To mount to non-height adjustable arms	Z-KH2-70.1
		To mount to height adjustable arms	Z-KH2-71.1
	<b>Dual cable hook</b>	Details page 18	Z-KH2-Y.1
	<b>Triple cable hook</b>  To mount to front joint of arm	To mount to non-height adjustable arms	Z-KH3-70.1
		To mount to height adjustable arms	Z-KH3-71.1
	<b>Triple cable hook</b>	Details page 18	Z-KH3-Y.1
	<b>Down post with cable hook</b>  To mount to front joint of arm	To mount to non-height adjustable arms Length 150 mm / 5.9" Length 300 mm / 11.8"	Z-KH6-70.1_150 Z-KH6-70.1_300
		To mount to height adjustable arms Length 150 mm / 5.9" Length 300 mm / 11.8"	Z-KH6-71.1_150 Z-KH6-71.1_300

# Fixings



## for cable hooks



Illustration	Description	Notes	Part no. (Y)
	Horizontal rail clamp	To mount to horizontal rail 10 x 25, 8 x 35, 10 x 30, 10 x 50 mm With locking, to mount to horizontal rail 10 x 25, 8 x 35, 10 x 30, 10 x 50 mm	6H 6R
	Vertical rail clamp	To mount to vertical European rail 10 x 25 mm	3
	Adapter for vertical wall channel	To mount to CIM wall channel (compatible with GCX channel)	4Z
	Universal pole clamp	V-block to mount to poles $\varnothing$ 23 - 40 mm / $\varnothing$ 0.9 - 1.6"	1V
	Fixed pole clamp	To mount to pole $\varnothing$ 25 mm / $\varnothing$ 1" To mount to pole $\varnothing$ 30 mm / $\varnothing$ 1.2" To mount to pole $\varnothing$ 35 mm / $\varnothing$ 1.4" To mount to pole $\varnothing$ 38 mm / $\varnothing$ 1.5"	1 1B 1F 1C

## Cable management






Illustration	Description	Notes	Part no.
	<b>Q-Fit</b>	Cover profile for height adjustable arms Cover profile for height adjustable arms, part is ordered together with the support arm Colours to choose: (C): RAL 7024 graphite grey (gr) or RAL 5013 cobalt blue (bl)	Z-QFIT.C O-QFIT.C
	<b>Q-Fit</b>	Cover profile for extension Cover profile for extension, part is ordered together with the support arm	Z-QFIT.EXT O-QFIT.EXT
	<b>Cable clip</b>	For down post ø 25 mm, L 100 mm / ø 1", L 3.9" Colours to choose: (C): RAL 7024 graphite grey (gr) or RAL 5013 cobalt blue (bl)	Z-KC-1.C



## CPU clamp and universal clamp



Illustration	Description	Notes	Part no.
 	<b>CPU dual clamp set</b>  Existing of: 2 clamps (top and bottom) 2 fixings for vertical wall channel  Colour to choose (D): RAL 9016 traffic white (1) or RAL 9002 grey white (2)	CPU width 27 - 45 mm / 1.1 - 1.8" 45 - 70 mm / 1.8 - 2.8" 60 - 100 mm / 2.4 - 3.9" 85 - 150 mm / 3.3 - 5.9"  With extension plate 130 - 170 mm / 5.1 - 6.7" 170 - 215 mm / 6.7 - 8.5	Z-CPU-4.D_27 Z-CPU-4.D_45 Z-CPU-4.D_60 Z-CPU-4.D_85  Z-CPU-4.D_130 Z-CPU-4.D_170
	<b>Universal clamp</b>  Adjustable from 35 - 57 mm / 1.4 - 2.3" 48 - 63 mm / 1.9 - 2.5"  Colour to choose (D): RAL 9016 traffic white (1) or RAL 9002 grey white (2)	Details page 21	Z-UK-Y.D_35 Z-UK-Y.D_48

# Fixings

## for universal clamps

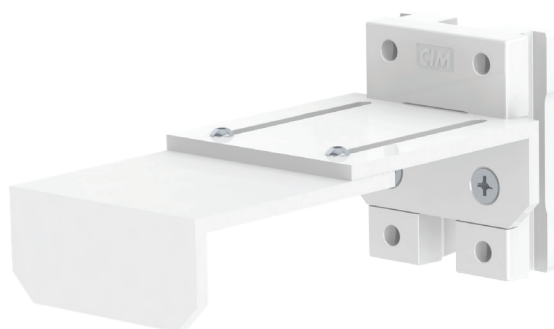

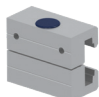



Illustration	Description	Notes	Part no. (Y)
	Universal pole clamp	V-block to mount to poles $\varnothing$ 23 - 40 mm / $\varnothing$ 0.9 - 1.6"	1V
	Horizontal rail clamp	To mount to horizontal rail 10 x 25, 8 x 35, 10 x 30, 10 x 50 mm With locking, to mount to horizontal rail 10 x 25, 8 x 35, 10 x 30, 10 x 50 mm	6H 6R
	Adapter for wall channel	To mount to vertical CIM wall channel (compatible with GCX channel)	4Z

## Power supply holster

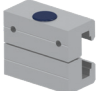






Illustration	Description	Notes	Part no.
	<p><b>Power supply enclosure</b></p> <p>Double 255 x 115 x 85 mm Double 10 x 4.5 x 3.4"</p> <p>Triple 255 x 165 x 85 mm Triple 10 x 6.5 x 3.4" (Dimensions H x W x D)</p>	<p>Details page 23</p>	<p>Z-PS2-Y.1</p> <p>Z-PS3-Y.1</p>
	<p><b>Power supply holster</b></p> <p>143 x 126 x 48 mm 5.6 x 5 x 1.9" (Dimensions H x W x D)</p> <p>Universal power supply holster for different sizes</p>	<p>Details page 23</p>	<p>Z-NH-Y.1</p>

# Fixings

## for power supply holster



Illustration	Description	Notes	Part no. (Y)
	Horizontal rail clamp	To mount to horizontal rail 10 x 25, 8 x 35, 10 x 30, 10 x 50 mm	6H
	Vertical rail clamp	To mount to vertical rail 10 x 25, 8 x 35, 10 x 30, 10 x 50 mm	6V
	Adapter for vertical wall channel	To mount to vertical CIM wall channel (compatible with GCX channel)	4Z
	Universal pole clamp	V-block to mount to poles $\varnothing$ 23 - 40 mm / $\varnothing$ 0.9 - 1.6"	1V
	Fixed pole clamp	To mount to pole $\varnothing$ 25 mm / $\varnothing$ 1" To mount to pole $\varnothing$ 30 mm / $\varnothing$ 1.2" To mount to pole $\varnothing$ 35 mm / $\varnothing$ 1.4" To mount to pole $\varnothing$ 38 mm / $\varnothing$ 1.5"	1 1B 1F 1C

## Wall channel and European rail






Illustration	Description	Length	Part no.
	<p><b>CIM wall channel</b></p> <p>Vertical wall channel including channel cover and end caps</p> <p>Individual lengths on request!</p> <p>Channel cover available in two colours (C): RAL 7024 graphite grey (gr) or RAL 9016 traffic white (w)</p>	<p>480 mm / 18.9"</p> <p>720 mm / 28.3"</p> <p>960 mm / 37.8"</p> <p>1200 mm / 47.2"</p>	<p>Z-WK.C_480</p> <p>Z-WK.C_720</p> <p>Z-WK.C_960</p> <p>Z-WK.C_1200</p>
	<p><b>European rail 10 x 25 mm</b></p> <p>To mount to CIM wall channel including adapter for vertical wall channel</p>	<p>300 mm / 11.8"</p> <p>400 mm / 15.7"</p> <p>500 mm / 19.7"</p>	<p>Z-NS-4Z.1_300</p> <p>Z-NS-4Z.1_400</p> <p>Z-NS-4Z.1_500</p>



## Keyboard tray



Illustration	Description	Length (T)	Part no.
	<b>Keyboard tray magnetic with fold-up function</b>  max. load capacity: 5 kg / 11 lbs	30S: 300 x 210 mm / 11.8 x 8.3" 40S: 400 x 150 mm / 15.8 x 5.9" 50S: 500 x 200 mm / 19.7 x 7.9" 58S: 580 x 200 mm / 22.8 x 7.9" 65S: 650 x 200 mm / 25.6 x 7.9"	Z-EF-Y.CD_T
	<b>Keyboard tray with fold-up function and left/ right retractable mouse tray</b>  max. load capacity: 5 kg / 11 lbs	RC: 580 x 200 mm / 22.8 x 7.9"	Z-EF-Y.CD_T
	<b>Keyboard tray magnetic retractable and with fold-up function</b>  max. load capacity: 5 kg / 11 lbs	50S: 500 x 200 mm / 19.7 x 7.9" 58S: 580 x 200 mm / 22.8 x 7.9"	Z-ER-Y.CD_T

### Colours to choose

#### Decorative parts (C)

gr = RAL 7024 (graphite grey)  
bl = RAL 5013 (cobalt blue)

#### Aluminium parts (D)

1 = RAL 9016 (traffic white)  
2 = RAL 9002 (grey white)

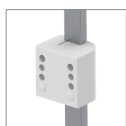
### Fixings

Y | details page 26



Horizontal rail clamp

5



Vertical rail clamp

3



Adapter for vertical wall channel

4S



Universal pole clamp

1V



Fixed pole clamp

1

1B





1F

1C

# Fixings

## for keyboard trays




Illustration	Description	Notes	Part no.
	Horizontal rail clamp	To mount to horizontal European rail 10 x 25, 8 x 35, 10 x 30 mm	5
	Vertical rail clamp	To mount to vertical European rail 10 x 25 mm	3
	Adapter for vertical wall channel	To mount to CIM wall channel (compatible with GCX channel)	4S
	Universal pole clamp	V-block to mount to poles $\varnothing$ 23 - 40 mm / $\varnothing$ 0.9 - 1.6"	1V
	Fixed pole clamp	To mount to pole $\varnothing$ 25 mm / $\varnothing$ 1" To mount to pole $\varnothing$ 30 mm / $\varnothing$ 1.2" To mount to pole $\varnothing$ 35 mm / $\varnothing$ 1.4" To mount to pole $\varnothing$ 38 mm / $\varnothing$ 1.5"	1 1B 1F 1C

# Handle



Illustration	Description	Notes	Part no.
	<b>Dual handle with VESA fixing</b>	For monitors with a maximum width of 430 mm / 16.9", Product weight: 1.5 kg / 3.3 lbs  570 mm / 22.4", Product weight: 1.9 kg / 4.2 lbs	Z-HDG.1_43  Z-HDG.1_57
Example of use Z-HDG.1			
			
	<b>Handle for carts</b>	Product weight: 0.8 kg/ 1.8 lbs  Colours to choose (C): RAL 5013 cobalt blue (bl) or RAL 7024 graphite grey (gr) or RAL 9016 traffic white (w)	Z-HD-4.C1
Example of use Z-HD-4.gr1			
			

## Handle

Illustration	Description	Notes	Part no.
	<b>Handle for monitor mount VESA</b>	Product weight: 1 kg / 2.2 lbs  Colours to choose (C): RAL 7024 graphite grey (gr) or RAL 5013 cobalt blue (bl) Colour of the aluminium parts (D): RAL 9016 traffic white (1) or RAL 9002 greywhite (2)	<b>Z-HD-G.CD</b>

Example of use Z-HD-G.gr1



	<b>Handle for 5" plunge plate, Mindray and Philips</b>	Product weight: 0.5 kg / 1.1 lbs  Colours to choose (C): RAL 7024 graphite grey (gr) or RAL 5013 cobalt blue (bl)	<b>Z-HDR-HZ.C</b>
---	--	---	-------------------

Example of use Z-HDR-HZ



5" Plunge Plate




Philips Table Top Mount



Mindray Mounting Adapter

## Down post



Illustration	Description	Notes	Part no.
	<b>Down post, rotatable</b>	<p>For non-height adjustable arms:  L 150 mm / 5.9", max. load 12 kg / 26.5 lbs  L 300 mm / 11.8", max. load 10 kg / 22 lbs</p> <p>For height adjustable arms:  L 150 mm / 5.9", max. load 12 kg / 26.5 lbs  L 300 mm / 11.8", max. load 10 kg / 22 lbs</p>	<p>Z-DPR-70.<b>CD</b>_150  Z-DPR-70.<b>CD</b>_300</p> <p>Z-DPR-71.<b>CD</b>_150  Z-DPR-71.<b>CD</b>_300</p>

### Colours to choose





#### Decorative parts (C)

gr = RAL 7024 (graphite grey)  
bl = RAL 5013 (cobalt blue)

#### Aluminium parts (D)

1 = RAL 9016 (traffic white)  
2 = RAL 9002 (grey white)

## Miscellaneous

Illustration	Description	Notes	Part no.	
	<b>Bottle holder</b>	Incl. adapter to mount to CIM wall channel (compatible with GCX channel) Please order CIM wall channel separately  Max. bottle diameter: 140 mm / 5.5" Maximum weight: 25 kg / 55.1 lbs (6-fold safety)	Z-GFH-4.1	<b>MD</b>
	<b>Mounting solution for barcode scanner</b>	For Z-bracket right hand side	Z-BCS-Mr.1	<del><b>MD</b></del>
	<b>Mounting solution for barcode scanner</b>	Incl. adapter to mount to CIM wall channel (compatible with GCX channel)	Z-BCS-4Z.1	<del><b>MD</b></del>
	<b>Mounting solution for barcode scanner for CIM keyboard tray</b>	Can be mounted left and right side of keyboard trays with non-retractable mouse trays	Z-BCS-TAB.1	<del><b>MD</b></del>





CIM med GmbH

Euro-Industriepark  
Margot-Kalinke-Str. 9  
80939 Munich / Germany

T +49 89. 978 94 08-0  
F +49 89. 978 94 08-29  
M [info@cim-med.com](mailto:info@cim-med.com)

[www.cim-med.com](http://www.cim-med.com)

