



MOUNTING REFERENCE GUIDE

5" Plunge Plate Adaptation

CIM Cable Integrated Mounting System



THINK BEFORE
YOU PRINT



Content

General notes	3
How to create part numbers	4
Product highlights	6
Support arm pivot	7
Extended pivot arm light duty	9
Extended pivot arm heavy duty	11
Height adjustable arm	13
Extended height adjustable arm	15
High position height adjustable arm	17
Extended high position height adjustable arm	19
Counter top	21
Cart light duty	23
Cart light duty kit I	25
Cart light duty kit II	27
Fixings	29

General notes

Monitor adaptations

The 5" plunge plate is intended to accept bottom-mounted monitors. Please note that a special mounting adapter is required for some monitors. The mounting adapter is mounted to the bottom and slides into the 5" plunge plate. For monitors from **Dräger** and **GE Healthcare** no special mounting adapters are required. For the monitors from **Mindray**, **Nihon Kohden**, **Spacelabs** and **Philips Sure Signs/ Vital Signs** mounting adapters are necessary to mount the monitors. For **Philips IntelliVue series** please refer to the separate catalogue: Philips Monitoring IntelliVue Series.

Components' grounding

All arms with integrated cable management are equipped with **component grounding**. No grounding is required for arms with external or semi-integrated cable management with cables not being led through joints.

Load capacity

All **height adjustable arms** have a load capacity of 22 kg / 48.5 lbs. Rear mounted monitor adaptations and horizontally mounted 5" plunge plates accept a maximum monitor weight of 18 kg / 39.7 lbs. An additional 4 kg / 8.8 lbs may be mounted on a down post underneath the front swivel part. Depending on material and tensile factor all weight indications have a 4-fold and/ or 6-fold safety factor according to IEC 60601-1 standards.

Custom-designed solutions and MRI applications

Please contact us for **custom-designed** solutions.

Product marking

All products which are classified as medical product risk class 1 are CE marked. As **medical product risk class 1** they are conform with the regulations (EU) 2017/745 (MDR) and IEC 60601-1. Other standards of the IEC 60601 series are not applicable to our products, regardless of their version.

MD A stand-alone product that is already classified as a medical product class 1 before being integrated into an overall medical device. The product is CE-marked. A declaration of conformity is available.

NO Accessories or spare parts that have no independent function and are therefore not subject to the MDR. These products are not CE-marked. A declaration of conformity is not required.

Warranty

All CIM arms have a 5-year warranty to be free of defects in material and functionality from the date of delivery.



How to create part numbers

Part numbers can be easily created by following the steps below:

Please replace the letters in **green** with the part no. code as per your requirements.

1. Components' grounding:

A = grounded

2. Choose the arm version required:

224A / 230A = support arm pivot
 33030A = extended pivot arm light duty
 H33030A = extended pivot arm heavy duty
 431A = height adjustable arm
 73130A = extended height adjustable arm
 531A = high position height adjustable arm
 83130A = extended high position height adjustable arm

3. Specify where you want to mount the arm and select the fixing (Y):

1V = pole ø 23 - 40 mm / 0.9 - 1.6"
 1 = pole ø 25 mm / 1.0"
 1B = pole ø 30 mm / 1.2"
 1F = pole ø 35 mm / 1.4"
 1C = pole ø 38 mm / 1.5"
 2F = horizontal rails 10 x 25, 8 x 35, 10 x 30, 10 x 50 mm
 3 = vertical rail 10 x 25 mm
 4S = vertical wall channel
 9 = Löwenstein Medical / ITD / mounting channel
 13 = Mindray medical supply units
 17 = Amico pendants & headwalls

4. Choose the colour requested for decorative parts (C):

gr = RAL 7024 (graphite grey)
 bl = RAL 5013 (cobalt blue)

How to create part numbers

5. Choose the colour requested for the aluminium die-cast parts (D):

- | | | |
|---|---|--------------------------|
| 1 | = | RAL 9016 (traffic white) |
| 2 | = | RAL 9002 (grey white) |

6. Specify the spring depending on the weight of your monitor/ device - only with height adjustable arms (X):

- | | | |
|-----|---|--------------------------------|
| 60 | = | 2 - 5 kg / 4.4 - 11 lbs |
| 95 | = | 4 - 9 kg / 8.8 - 19.8 lbs |
| 110 | = | 4.5 - 12.5 kg / 9.9 - 27.6 lbs |
| 130 | = | 7.5 - 13 kg / 16.5 - 28.7 lbs |
| 160 | = | 12.5 - 19 kg / 27.6 - 41.9 lbs |
| 175 | = | 13 - 16 kg / 28.7 - 35.3 lbs |
| 220 | = | 16 - 22 kg / 35.3 - 48.5 lbs |

Example

01 Grounding		02 Arm version		03 Fixing		04 & 05 Colour		06 Spring tension
A	-	431A	-	Y	.	CD	-	X
A	-	431A	-	4S	.	gr1	-	95

Product highlights

Non-height adjustable arm

Pivot and extended pivot arms offer **full cable integration** and easy cleaning for **infection control** in all critical care areas in the clinical environment. Our **5-years warranty** guarantees reliable, trouble-free and maintenance-free operation. The swivel function at the fixing point as well as the **tilt/ swivel function** of the monitor adaptation offers optimum positioning of your device. The extended pivot arm is a two-part arm with central pivot point between the two arm sections. All bottom-mounted monitors have the safety feature of a **20° tilt stop**.

Height adjustable arm

The height adjustable arm offers **full cable integration**, one-wipe clean surfaces and our **5-year warranty** on the entirety of the product. Vertically and horizontally adjustable, the arm offers optimal positioning of your device. A constant viewing angle when vertically adjusted is guaranteed by a parallel linkage. **Weight-optimized springs counter-balance** the monitor without making any adjustments. All bottom-mounted monitors have the safety feature of a **20° tilt stop**. Individual rotational stops may be integrated in any joint.

To provide the perfect combination of arm and monitor, the CIM articulated height adjustable arm has a simple quarter-turn lock to hold the arm safely in position when removing the monitor. Furthermore the arm is equipped with the unique safety feature of a slow-release gas spring. Should anybody try to remove the monitor before locking the arm in position, the arm will only rise at a slow and even tempo.

SAFETY

Support arm pivot

MD



Monitor adaption

5" plunge plate

Colours to choose **CD**

decorative parts RAL 5013 cobalt blue / RAL 7024 graphite grey
aluminum parts RAL 9016 traffic white / RAL 9002 grey white

Max. load capacity support arm

18 kg / 39.7 lbs

Max. load monitor adaptation

18 kg / 39.7 lbs

Product weight

arm type 240 1.8 kg/ 4.0 lbs
arm type 300 1.9 kg/ 4.2 lbs

Part number

arm type 240 A-224A-**Y.CD**
arm type 300 A-230A-**Y.CD**

Fixings **Y**

details page 29



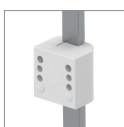
4S

Adapter for
vertical wall channel



2F

Horizontal rail clamp



3

Vertical rail clamp



1V

Universal pole clamp



1
1B
1F
1C

Fixed pole clamp



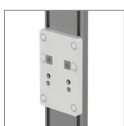
13

Adapter for Mindray
medical supply units



17

Adapter for Amico
pendants & headwalls



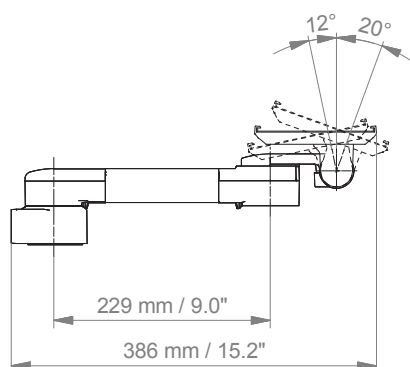
9

Adapter for Löwenstein Medical /
ITD / mounting channel

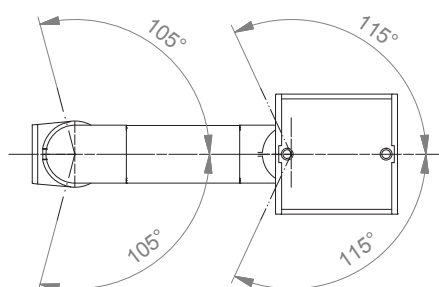
Support arm pivot

Technical data - arm type 300

SIDE VIEW

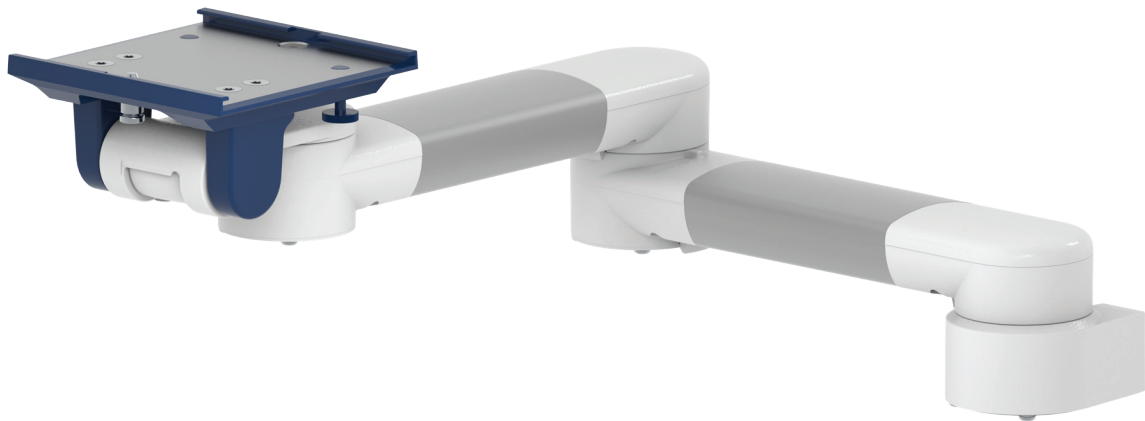


TOP VIEW



Extended pivot arm light duty

MD



Monitor adaption

5" plunge plate

Colours to choose **CD**

decorative parts RAL 5013 cobalt blue / RAL 7024 graphite grey
aluminum parts RAL 9016 traffic white / RAL 9002 grey white

Max. load capacity support arm

8 kg / 17.6 lbs

Max. load monitor adaptation

8 kg / 17.6 lbs

Product weight

2.8 kg / 6.2 lbs

Part number

A-33030A-**Y.CD**

Fixings **Y**

details page 29



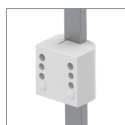
4S

Adapter for
vertical wall channel



2F

Horizontal rail clamp



3

Vertical rail clamp



1V

Universal pole clamp



1
1B
1F
1C

Fixed pole clamp



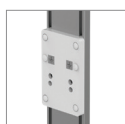
13

Adapter for Mindray
medical supply units



17

Adapter for Amico
pendants & headwalls



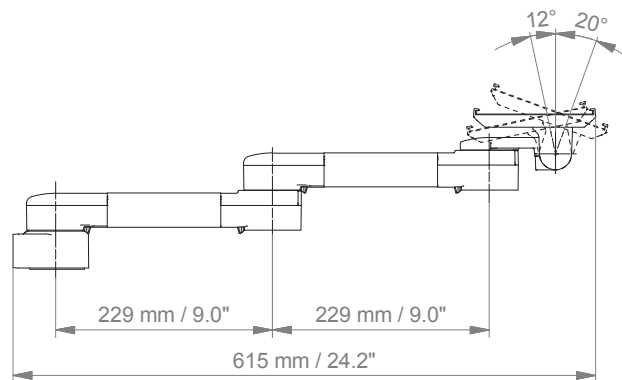
9

Adapter for Löwenstein Medical /
ITD / mounting channel

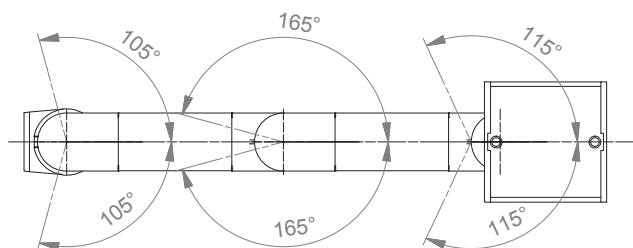
Extended pivot arm light duty

Technical data

SIDE VIEW

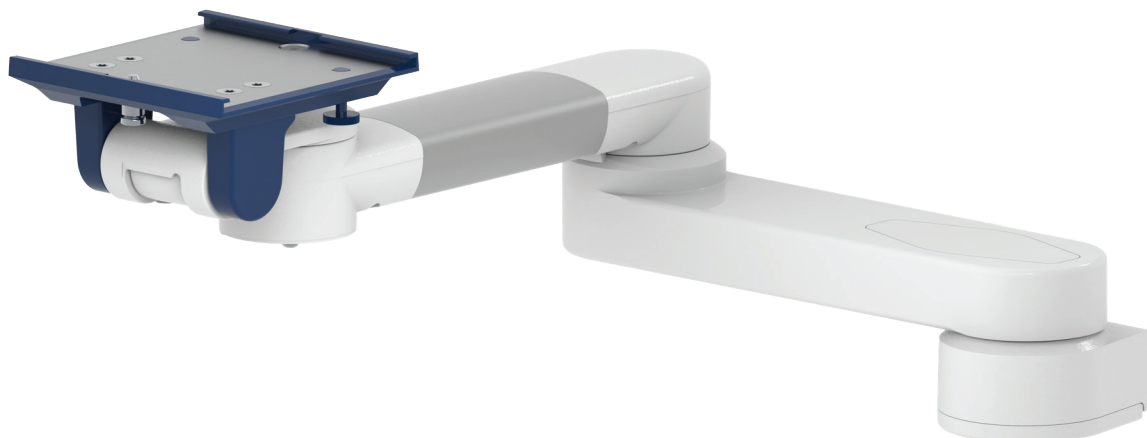


TOP VIEW



Extended pivot arm heavy duty

MD



Monitor adaption

5" plunge plate

Colours to choose **CD**

decorative parts RAL 5013 cobalt blue / RAL 7024 graphite grey
aluminum parts RAL 9016 traffic white / RAL 9002 grey white

Max. load capacity support arm

18 kg / 39.7 lbs

Max. load monitor adaptation

18 kg / 39.7 lbs

Product weight

3.0 kg / 6.6 lbs

Part number

A-H33030A-**Y.CD**

Fixings **Y**

details page 29



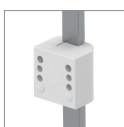
4S

Adapter for
vertical wall channel



2F

Horizontal rail clamp



3

Vertical rail clamp



1V

Universal pole clamp



1
1B
1F
1C

Fixed pole clamp



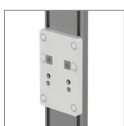
13

Adapter for Mindray
medical supply units



17

Adapter for Amico
pendants & headwalls



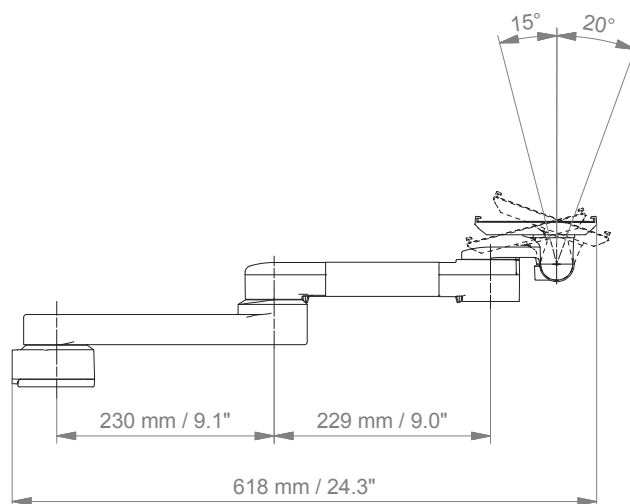
9

Adapter for Löwenstein Medical /
ITD / mounting channel

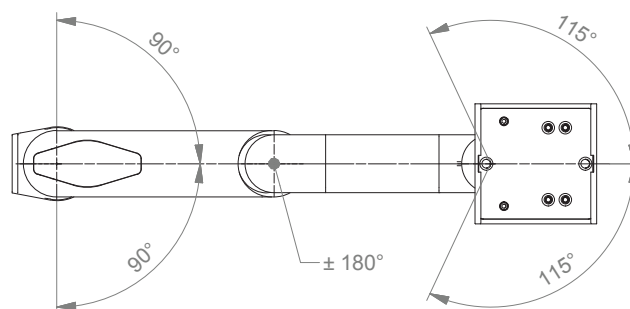
Extended pivot arm heavy duty

Technical data

SIDE VIEW



TOP VIEW



Height adjustable arm

MD



Monitor adaption

5" plunge plate

Height adjustment

slow-flowing spring, parallel linkage for a constant viewing angle

Colours to choose CD

decorative parts RAL 5013 cobalt blue / RAL 7024 graphite grey
aluminum parts RAL 9016 traffic white / RAL 9002 grey white

Max. load capacity support arm

22 kg / 48.5 lbs

Max. load monitor adaption

18 kg / 39.7 lbs

Product weight

3.8 kg / 8.4 lbs

Balancing range X

600 N (2-5 kg / 4.4-11 lbs); 950 N (4-9 kg / 8.8-19.8 lbs); 1100 N (4.5-12.5 kg / 9.9-27.6 lbs); 1300 N (7.5-13 kg / 16.5-28.7 lbs); 1600 N (12.5-19 kg / 27.6-41.9 lbs); 1750 N (13-16 kg / 28.7-35.3 lbs); 2200 N (16-22 kg / 35.3-48.5 lbs)

Part number

A-431A-Y.CD_X

Fixings Y

details page 29



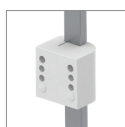
4S

Adapter for vertical wall channel



2F

Horizontal rail clamp



3

Vertical rail clamp



1V

Universal pole clamp



1
1B
1F
1C

Fixed pole clamp



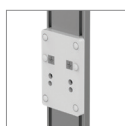
13

Adapter for Mindray medical supply units



17

Adapter for Amico pendants & headwalls



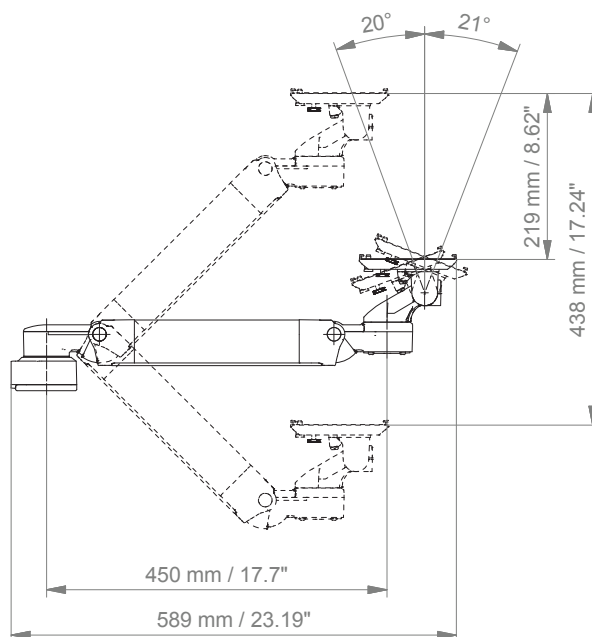
9

Adapter for Löwenstein Medical / ITD / mounting channel

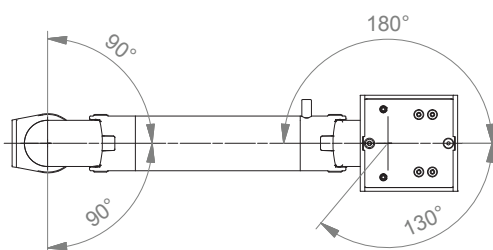
Height adjustable arm

Technical data

SIDE VIEW

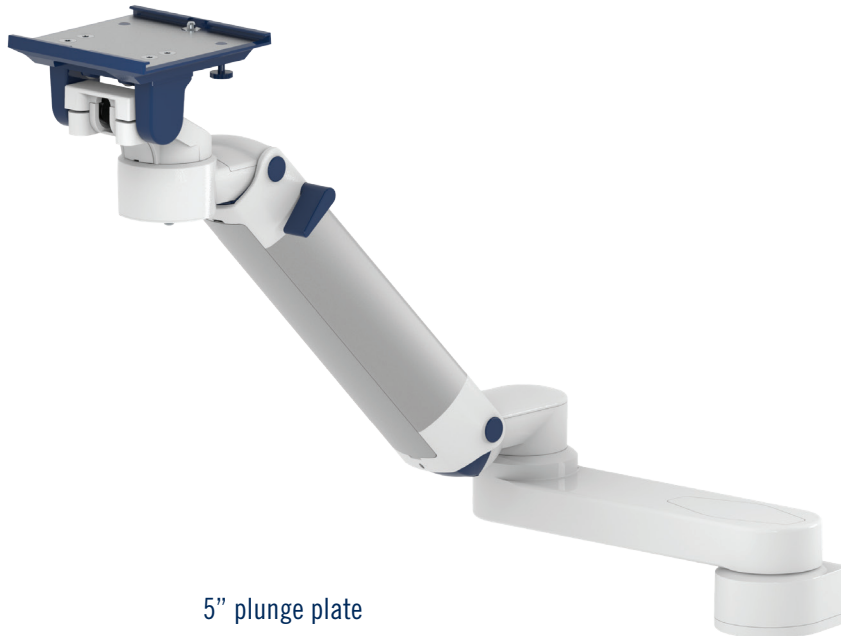


TOP VIEW



Extended height adjustable arm

MD



Monitor adaption

5" plunge plate

Height adjustment

slow-flowing spring, parallel linkage for a constant viewing angle

Colours to choose **CD**

decorative parts RAL 5013 cobalt blue / RAL 7024 graphite grey
aluminum parts RAL 9016 traffic white / RAL 9002 grey white

Max. load capacity support arm

22 kg / 48.5 lbs

Max. load monitor adaptation

18 kg / 39.7 lbs

Product weight

4.9 kg / 10.8 lbs

Balancing range **X**

600 N (2-5 kg / 4.4-11 lbs); 950 N (4-9 kg / 8.8-19.8 lbs); 1100 N (4.5-12.5 kg / 9.9-27.6 lbs); 1300 N (7.5-13 kg / 16.5-28.7 lbs); 1600 N (12.5-19 kg / 27.6-41.9 lbs); 1750 N (13-16 kg / 28.7-35.3 lbs); 2200 N (16-22 kg / 35.3-48.5 lbs)

Part number

A-73130A-Y.CD_X

Fixings **Y**

details page 29



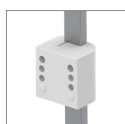
4S

Adapter for vertical wall channel



2F

Horizontal rail clamp



3

Vertical rail clamp



1V

Universal pole clamp



1
1B
1F
1C

Fixed pole clamp



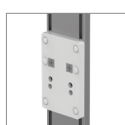
13

Adapter for Mindray medical supply units



17

Adapter for Amico pendants & headwalls



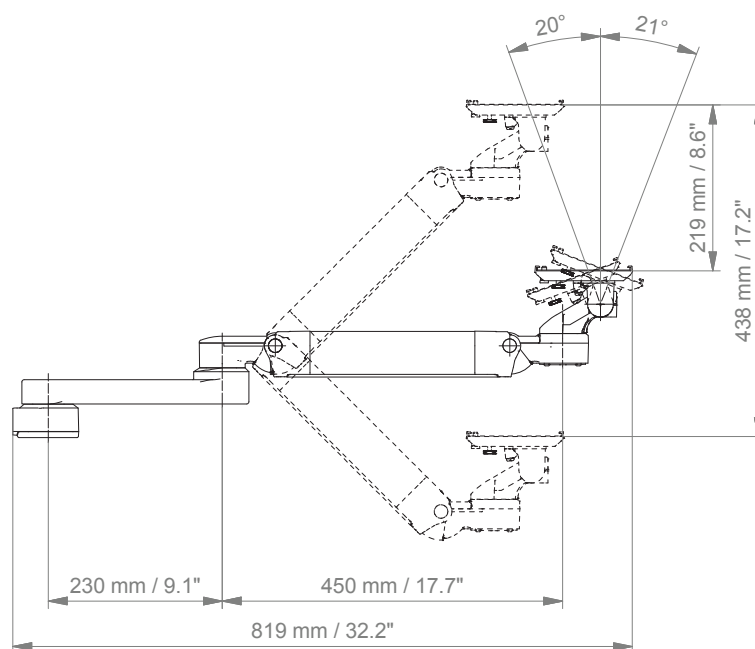
9

Adapter for Löwenstein Medical / ITD / mounting channel

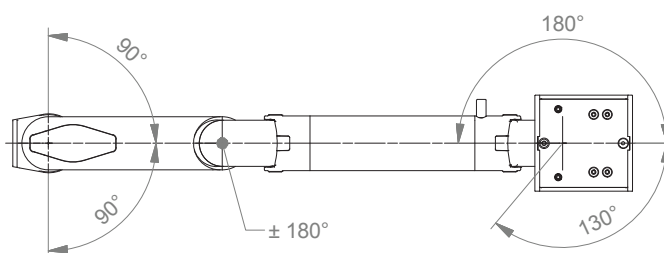
Extended height adjustable arm

Technical data

SIDE VIEW



TOP VIEW



High position height adjustable arm

MD


Monitor adaption

5" plunge plate

Height adjustment

slow-flowing spring, parallel linkage for a constant viewing angle

Colours to choose **CD**

decorative parts RAL 5013 cobalt blue / RAL 7024 graphite grey
aluminum parts RAL 9016 traffic white / RAL 9002 grey white

Max. load capacity support arm

22 kg / 48.5 lbs

Max. load monitor adaptation

18 kg / 39.7 lbs

Product weight

4.2 kg / 9.3 lbs

Balancing range **X**

600 N (2-5 kg / 4.4-11 lbs); 950 N (4-9 kg / 8.8-19.8 lbs); 1100 N (4.5-12.5 kg / 9.9-27.6 lbs); 1300 N (7.5-13 kg / 16.5-28.7 lbs); 1600 N (12.5-19 kg / 27.6-41.9 lbs); 1750 N (13-16 kg / 28.7-35.3 lbs); 2200 N (16-22 kg / 35.3-48.5 lbs)

Part number

A-531A-Y.CD_X

Fixings **Y**

details page 29



4S

Adapter for vertical wall channel



3

Vertical rail clamp



1V

Universal pole clamp



1

1B
1F
1C

Fixed pole clamp



13

Adapter for Mindray medical supply units



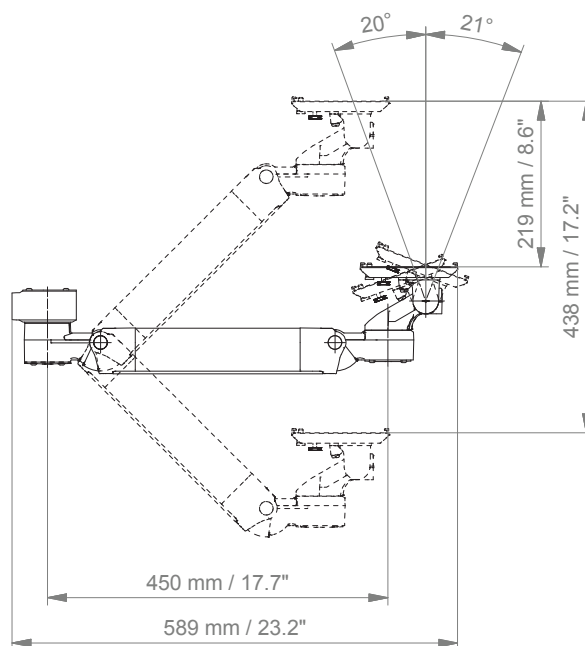
17

Adapter for Amico pendants & headwalls

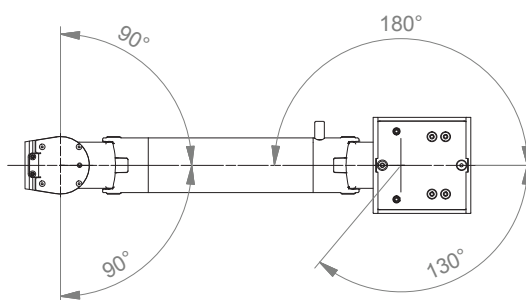
High position height adjustable arm

Technical data

SIDE VIEW



TOP VIEW



Extended high position height adjustable arm

MD



Monitor adaption

5" plunge plate

Height adjustment

slow-flowing spring, parallel linkage for a constant viewing angle

Colours to choose **CD**

decorative parts RAL 5013 cobalt blue / RAL 7024 graphite grey
aluminum parts RAL 9016 traffic white / RAL 9002 grey white

Max. load capacity support arm

22 kg / 48.5 lbs

Max. load monitor adaptation

18 kg / 39.7 lbs

Product weight

5.3 kg / 11.7 lbs

Balancing range **X**

600 N (2-5 kg / 4.4-11 lbs); 950 N (4-9 kg / 8.8-19.8 lbs); 1100 N (4.5-12.5 kg / 9.9-27.6 lbs); 1300 N (7.5-13 kg / 16.5-28.7 lbs); 1600 N (12.5-19 kg / 27.6-41.9 lbs); 1750 N (13-16 kg / 28.7-35.3 lbs); 2200 N (16-22 kg / 35.3-48.5 lbs)

Part number

A-83130A-**Y.CD_X**

Fixings **Y**

details page 29



4S

Adapter for
vertical wall channel



3

Vertical rail clamp



1V

Universal pole clamp



1

1B

1F

1C

Fixed pole clamp



13

Adapter for Mindray
medical supply units



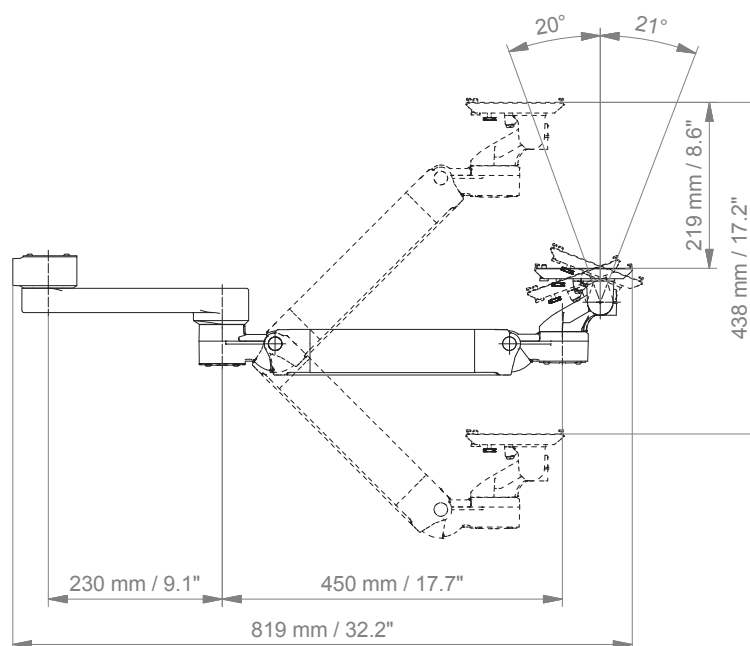
17

Adapter for Amico
pendants & headwalls

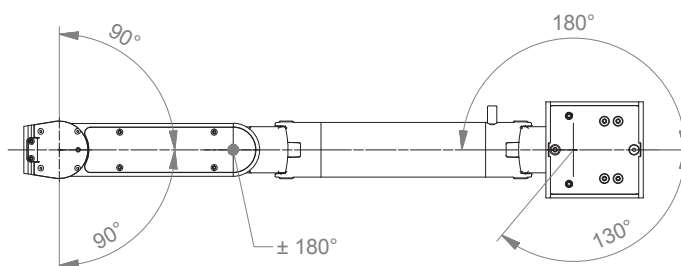
Extended high position height adjustable arm

Technical data

SIDE VIEW



TOP VIEW



Counter top

MD


Monitor adaption

5" plunge plate

Colours to choose **CD**

decorative parts	RAL 5013 cobalt blue / RAL 7024 graphite grey
aluminum parts	RAL 9016 traffic white / RAL 9002 grey white

Max. load monitor adaptation

18 kg / 39.7 lbs

Part number

Counter top with base plate (see illustration)

T-HA-60. CD _50	height 50 mm / 2"
T-HA-60. CD _120	height 120 mm / 4.7"

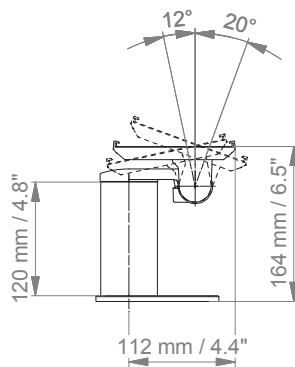
Counter top without base plate

T-HA-69. CD _50	height 50 mm / 2"
T-HA-69. CD _120	height 120 mm / 4.7"

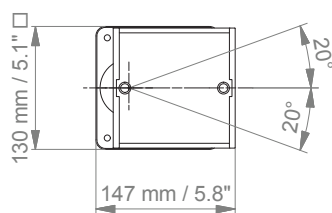
Counter top

Technical data - with base plate

SIDE VIEW



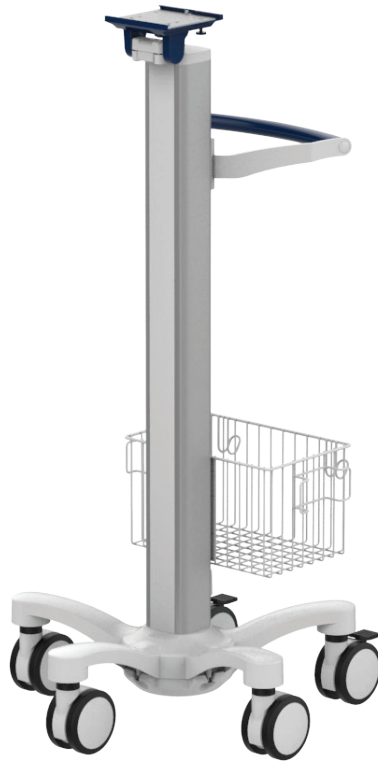
TOP VIEW



Cart light duty

MD

Example configuration



Monitor adaption

5" plunge plate with tilt function

Accessories

5-star base aluminum base with counter weight
double wheel castors, ø 100 mm / 3.9", 2 lockable
column to accept components and accessories on opposite sides

Colours to choose **CD**

decorative parts RAL 5013 cobalt blue / RAL 7024 graphite grey
base RAL 9016 traffic white
handle RAL 9016 traffic white / RAL 5013 cobalt blue / RAL 7024 graphite grey

Max. load capacity

14 kg / 30.9 lbs

Optional accessories

basket big 300 x 200 x 180 mm / 11.8 x 7.9 x 7.1"
basket small 200 x 150 x 100 mm / 7.9 x 5.9 x 3.9"
handle

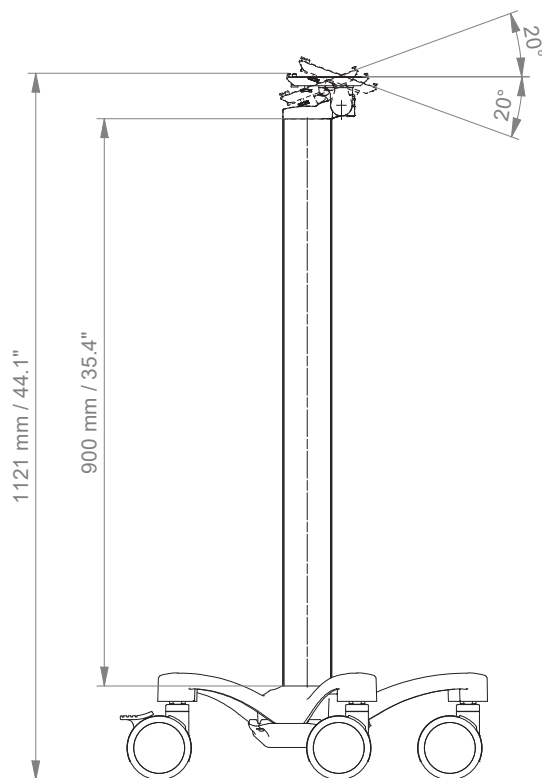
Part numbers

cart light duty R-002A.**CD**
basket big Z-51-4Z.1
basket small Z-52-4Z.1
handle Z-HD-4.**C1**

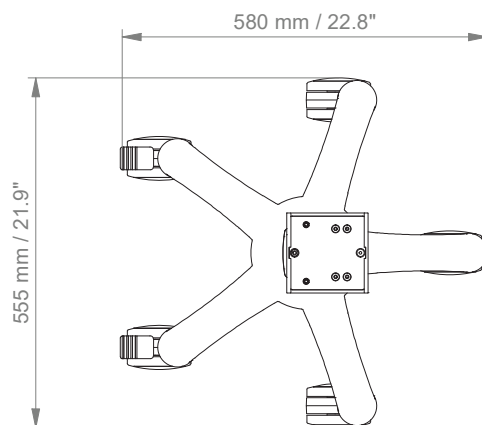
Cart light duty

Technical data

SIDE VIEW



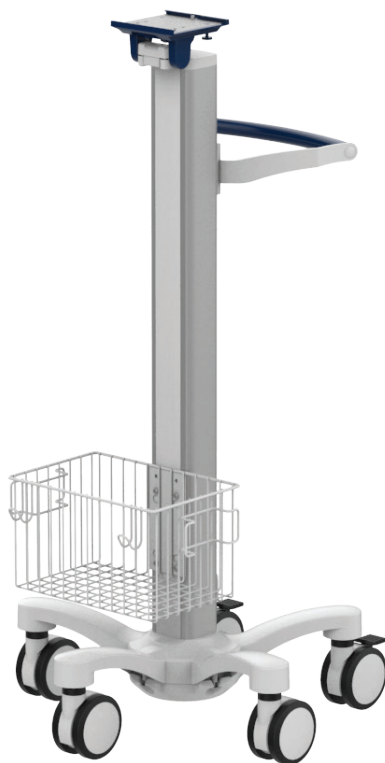
TOP VIEW



Cart light duty kit I

MD

Kit configuration



Monitor adaption

5" plunge plate with tilt function

Cart light duty

5-star base aluminum base with counter weight
double wheel castors, ø 100 mm / 3.9", 2 lockable
column to accept components and accessories on opposite sides

Colours

decorative parts RAL 5013 cobalt blue
base RAL 9016 traffic white
handle RAL 5013 cobalt blue

Max. load monitor adaptation

11 kg / 24.3 lbs

Max. load basket

10 kg / 22 lbs

Kit number

P-R-002A.bl1_F1_036

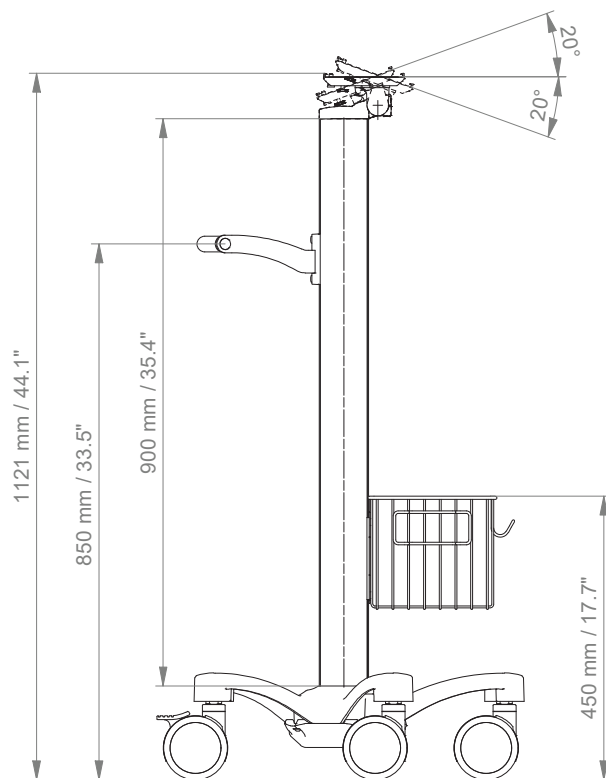
Consisting of the following parts:

R-002A.bl1	cart light duty
Z-HD-4.bl1	handle for carts
Z-51-4Z.1	basket big 300 x 200 x 180 mm / 11.8 x 7.9 x 7.1"

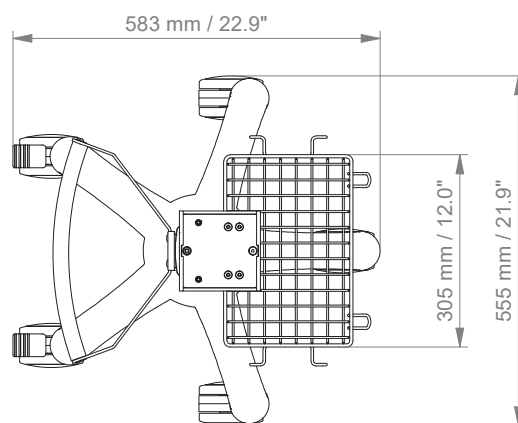
Cart light duty kit I

Technical data

SIDE VIEW



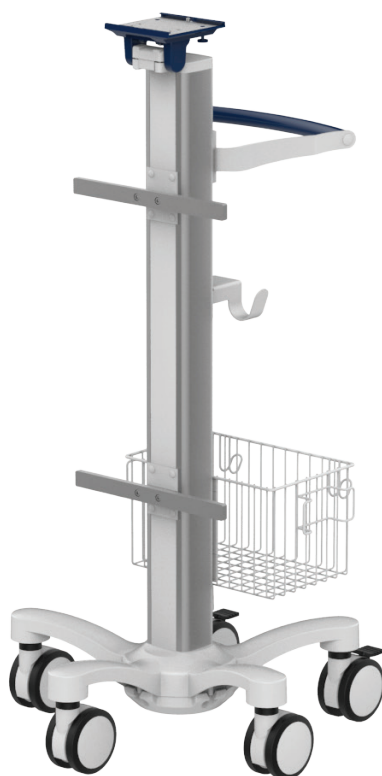
TOP VIEW



Cart light duty kit II

MD

Kit configuration



Monitor adaption

5" plunge plate with tilt function

Cart light duty

5-star base aluminum base with counter weight
double wheel castors, \varnothing 100 mm / 3.9", 2 lockable
column to accept components and accessories on opposite sides

Colours

decorative parts RAL 5013 cobalt blue
base RAL 9016 traffic white
handle RAL 5013 cobalt blue

Max. load monitor adaptation

5.9 kg / 13.0 lbs

Max. load basket

10 kg / 22 lbs

Kit number

R-002A.bl1_286930

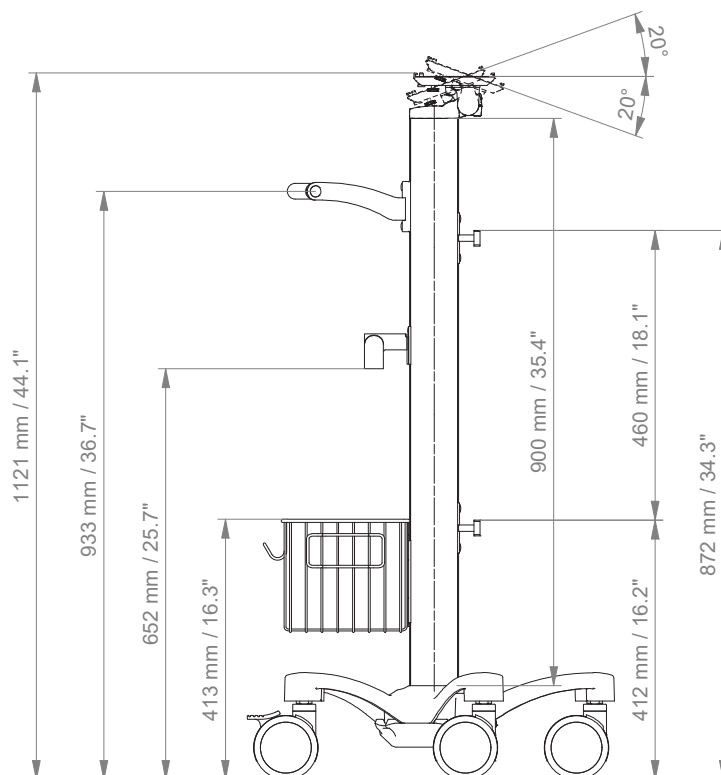
Consisting of the following parts:

R-002A.bl1	cart light duty
Z-HD-4.bl1	handle for carts
Z-51-4Z.1	basket big 300 x 200 x 180 mm / 11.8 x 7.9 x 7.1"
Z-KH2-4Z.1	dual cable hook
Z-NS-4Z.1_300	(2) European rail 10 x 25 x 300 mm / 0.4 x 1 x 11.8"

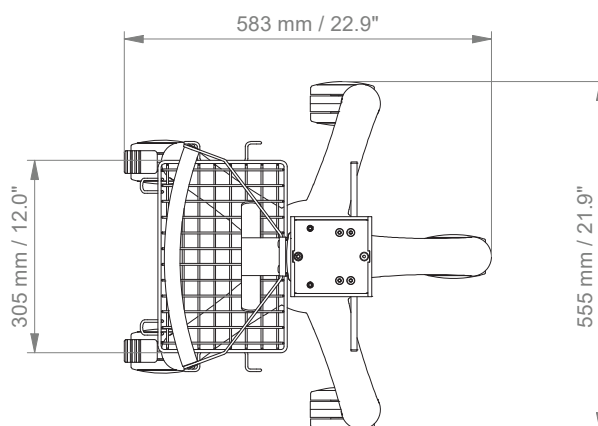
Cart light duty kit II

Technical data

SIDE VIEW











TOP VIEW



Fixings Y



Illustration	Description	Notes	Weight	Part no.
	Adapter for vertical wall channel	To mount to CIM wall channel (compatible with GCX channel) Please order separately: CIM wall channel, see catalogue accessoires	0.6 kg / 1.3 lbs	4S
	Horizontal rail clamp	To mount to horizontal European rails 10 x 25, 8 x 35, 10 x 30, 10 x 50 mm	1.1 kg / 2.4 lbs	2F
	Vertical rail clamp	To mount to vertical European rail 10 x 25 mm	0.5 kg / 1.1 lbs	3
	Universal pole clamp	V-block to mount to pole \varnothing 23 - 40 mm / 0.9 - 1.6"	0.6 kg / 1.3 lbs	1V
	Fixed pole clamp	To mount to pole \varnothing 25 mm / 1.0" To mount to pole \varnothing 30 mm / 1.2" To mount to pole \varnothing 35 mm / 1.4" To mount to pole \varnothing 38 mm / 1.5"	0.3 kg / 0.7 lbs 0.4 kg / 0.9 lbs 0.4 kg / 0.9 lbs 0.4 kg / 0.9 lbs	1 1B 1F 1C
	Adapter medical supply units	For Mindray medical supply units	0.8 kg / 1.8 lbs	13
	Adapter pendants & headwalls	For Amico pendants & headwalls	0.6 kg / 1.3 lbs	17
	Adapter pendants & headwalls	For Löwenstein Medical / ITD / mounting channels	0.4 kg / 0.9 lbs	9



CIM med GmbH

Euro-Industriepark
Margot-Kalinke-Str. 9
80939 Munich / Germany

T +49 89. 978 94 08-0

CIM med Inc.

2024 E Independence Commerce Dr
Matthews, NC 28105 / USA

T +1 855 895 4722

info@cim-med.com
www.cim-med.com

